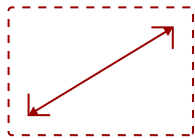




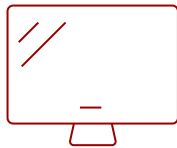
CDE4330-W1 - 43" DISPLAY, 3840 X 2160 RESOLUTION, 450 CD/M2 HIGH BRIGHTNESS, 24/7, HDMI IN/OUT, USB-C, BUILT-IN CONTENT SHARING, REMOTE MANAGEMENT, AV CONTROL SYSTEM INTEROPERABILITY, TILING MATRIX, LANDSCAPE AND PORTRAIT MODE, WI-FI ADAPTER BUNDLE

Key Features

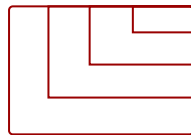
- All-in-one solution includes ViewBoard interactive display, and Wi-Fi adapter
- Powerful ViewSonic Embedded Signage Platform (VESP)
- Integrated RJ45 and USB Wi-Fi
- ViewBoard Cast content sharing software
- myViewBoard Display app for remote screen sharing



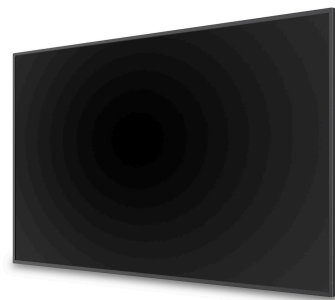
43
DISPLAY



MVA
PANEL



RESOLUTION



Product Description

Streamline your presentations, enhance collaboration, and succeed with the ViewSonic CDE4330-W1 digital display bundle. Whether your employees are in office or working remotely, they will enjoy fast and easy ways to communicate thanks to ViewBoard Cast™ screen sharing software and the myViewBoard® Display app that allows up to four participants to connect and share content. For maximum visibility even in rooms with high ambient light, these displays offer stunning 4K Ultra HD resolution, high brightness and a 25% high haze anti-glare screen. What's more, these all-in-one displays simplify installation and maintenance thanks to a powerful secured embedded platform that delivers smooth content playback without the need for a PC or media player. Bundle includes CDE4330 and removable Wi-Fi adapter.

Specifications

	More Information
OS	Android 11.0
Media Player Type	Media Player
GPU	Dual Core, G52MP2
CPU	Amlogic T982 / 1.9GHz CPU
CPU Processor Speed	Quad-core, 1.5GHz
Memory	4GB DDR4
Storage	32GB
Built-in Software	HTML5, JavaScript and CSS
Internal Speakers	10W (x2)
HDMI 2.1 (HDCP 2.2) In	2
Audio-out (HDMI ARC)	1
HDMI 2.0 Out	1
SPDIF Audio Out	1
USB 3.0	1
USB 2.0	1
USB Type C	1
RS232	1
Ethernet LAN (RJ45)	1
WIFI Module Slot	1
Voltage	100-240 VAC +/- 10% Wide Range, 50-60Hz +/-3 Hz
Consumption (max)	215W
Consumption (typical)	115W
Stand-by	<0.5W
Temperature	32-104° F (0 - 40° C)
Humidity (non-condensing)	20-80%
Net (lbs)	14.55
Gross (lbs)	22.93
Net (kg)	6.6
Gross (kg)	10.4
Packaging (in.)	41.57 x 26.46 x 6.14
Physical (in.)	37.98 x 21.75 x 2.81
Packaging (mm)	1056 x 672 x 156
Physical (mm)	964.6 x 552.5 x 71.4

VESA Compatible	200 x 200 mm
Screw Size	M6
Screw Length (mm)	12
AV Control	AMX Certified, Extron Certified, Crestron Connected
Warranty	Three-year limited warranty on parts, labor and backlight
Recycle/Disposal	Please dispose of in accordance with local, state or federal laws.
Package Contents	CDE4330 Wireless Presentation Display, Remote control with batteries, Quick Start Guide, Power cable, HDMI Cable, USB-C cable, Wall Mount Screws and RS232 cable
Regulations	cTUVus, FCC, Energy Star 8.0, EPEAT, RoHS, Mexico NOM, Mexico Energy
Ethernet LAN	10/100/1000 MB
Wifi	Wi-Fi 6 (802.11ax (a/b/g/n/ac/ax))
Bluetooth	Bluetooth 5.0
Display Type	LCD
Screen Size	43
Viewable Area (in.)	42.5
Orientation	Landscape / Portrait
Colors	1.07B
Color Space Support	8 bit + FRC
Light Source	DLED
Display Resolution	3840 x 2160
Refresh Rate	60Hz
Panel Type	MVA
Aspect Ratio	16:9
Static Contrast Ratio	1,200:1
Dynamic Contrast Ratio	5,000:1
Backlight Life (Hours)	50,000
Brightness	450 cd/m2
Response Time (Typical GTG)	6.5ms
Bezel Width (in.)	0.79 (uniform)
Bezel Width (mm)	20 (uniform)
Viewing Angles	178° horizontal, 178° vertical
Panel Surface	Anti-Glare type, Hard-coating (3H), Haze 25%
Operation Rating	24/7



Contact Sales
ViewSonic.com
888.881.8781
email:
salesinfo@viewsonic.com