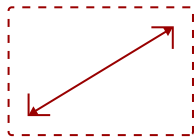


CDE6512-E1 - 65" DISPLAY, 3840 X 2160 RESOLUTION, 290 CD/M2 BRIGHTNESS, 16/7 OPERATION RATING, WALL MOUNT INCLUDED

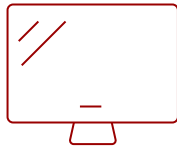
## Key Features

---

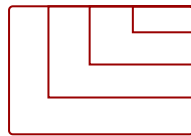
- All-in-one solution includes ViewBoard interactive display and wall mount
- Powerful ViewSonic Embedded Signage Platform (VESP)
- Integrated RJ45 and USB Wi-Fi
- ViewBoard Cast content sharing software
- myViewBoard Display app for remote screen sharing



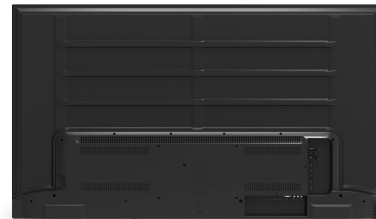
65  
DISPLAY



PANEL



RESOLUTION



## Product Description

---

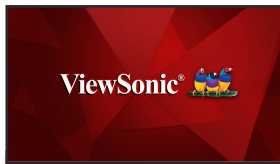
The ViewSonic® CDE6512 is a 65" 4K Ultra HD large format wireless presentation display. With features including a razor-sharp resolution of 3840 x 2160, 290-nit high brightness, 178-degree ultra-wide viewing angles, 2 x 10W speakers, and wireless screen sharing, the CDE6512 transforms meeting rooms into a dynamic communications hub. The built-in ViewBoard® Cast screen sharing software\* (along with the optional ViewSonic vCastSender app), and myViewBoard Display software, enables both on-site and online users to participate in conferences and simultaneously share content. Equipped with a 1.5GHz Quad-core embedded SoC processor, 2GB RAM, and 16GB of internal memory, the CDE6512 can play multimedia from internal storage or a USB flash drive 16 hours a day, seven days a week. And with remote configuration and content management system support, the ViewSonic® CDE6512 is also suitable for a wide array of diverse signage applications. Bundle includes CDE6512 and wall mount.

# Specifications

---


	More Information
<b>Internal Speakers</b>	10W (x2)
<b>Voltage</b>	100-240 VAC +/- 10% Wide Range, 50-60Hz +/-3 Hz
<b>Consumption (max)</b>	300W
<b>Consumption (typical)</b>	220W
<b>Stand-by</b>	<0.5W
<b>On Screen Display</b>	Picture, Screen, Audio, Time, Advanced Options, About
<b>Temperature</b>	32-104° F (0 - 40° C)
<b>Humidity (non-condensing)</b>	20-80%
<b>Operating System</b>	Android 11.0
<b>CPU</b>	Quad-core, 1.5GHz, MT9632/ARM Cortex-A53
<b>GPU</b>	Dual Core, G52MP2
<b>Memory</b>	2GB DDR4
<b>Storage</b>	16GB (eMMC)
<b>Media Player Type</b>	Yes
<b>Screen Size</b>	65
<b>Viewable Area (in.)</b>	64.5
<b>Colors</b>	1.07B
<b>Light Source</b>	DLED
<b>Display Resolution</b>	3840 x 2160
<b>Aspect Ratio</b>	16:9
<b>Static Contrast Ratio</b>	1,200:1
<b>Viewing Angles</b>	178° horizontal, 178° vertical
<b>Dynamic Contrast Ratio</b>	5,000:1
<b>Backlight Life (Hours)</b>	30,000
<b>Response Time (Typical GTG)</b>	8ms
<b>Brightness</b>	290 cd/m2
<b>Panel Surface</b>	Hard Coat - Anti-Glare, 2% Haze, 3H with anti-glare treatment
<b>Operation Rating</b>	16/7
<b>Gross (kg)</b>	26.8
<b>Net (kg)</b>	20.3
<b>Net (lbs)</b>	44.8
<b>Gross (lbs)</b>	59.1
<b>RCA Audio In</b>	1

<b>SPDIF Audio Out</b>	1
<b>USB 2.0</b>	2
<b>USB-C (15W PD)</b>	1
<b>RS232 In</b>	1
<b>HDMI 2.0 In</b>	2
<b>VGA</b>	1
<b>Wi-Fi/Bluetooth Slot</b>	1
<b>Ethernet LAN (RJ45)</b>	1
<b>3.5mm Audio Out</b>	1
<b>Packaging (mm)</b>	1585 x 947 x 180
<b>Physical (mm)</b>	1461.4 x 843.2 x 80.4
<b>Packaging (in.)</b>	62.4 x 37.28 x 7.09
<b>Physical (in.)</b>	57.54 x 33.2 x 3.17
<b>VESA Compatible</b>	300 x 200 mm
<b>Regulations</b>	cTUVus, FCC, Energy Star, EPEAT (Bronze), RoHS
<b>Package Contents</b>	CDE6512, Remote control with batteries, Quick Start Guide, Power cable, HDMI Cable, Wall Mount Screws and RS232 adapter
<b>Recycle/Disposal</b>	Please dispose of in accordance with local, state or federal laws.
<b>Warranty</b>	Three-year limited warranty on parts, labor and backlight
<b>Notices</b>	AMX, Crestron, and Extron Compatible



### Contact Sales

[ViewSonic.com](http://ViewSonic.com)

888.881.8781 

email:

[salesinfo@viewsonic.com](mailto:salesinfo@viewsonic.com)