

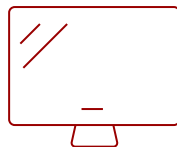
LS510WH-2 - 3,000 ANSI LUMENS WXGA LED BUSINESS/EDUCATION PROJECTOR

Key Features

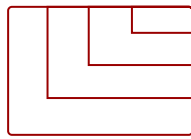
- Bright 3000 Lumens WXGA LED projector with advanced visual features
- Latest LED technology provides an extended lifespan of up to 30,000 hours
- 1.1x optical zoom, 40-degree vertical keystone and 360 degree projection
- This projector can be configured to automatically turn on and off
- Supports most media players, PCs, Macs, and mobile devices with inputs such as HDMI, USB, Ethernet LAN



30 - 300 in. / 0.76 - 7.62 m
DISPLAY



PANEL



VGA(640 x 480) to Full HD(1920 x 1080)
RESOLUTION



Product Description

The eco-friendly ViewSonic LS510WH-2 WXGA projector uses the latest LED technology for a brighter, more vivid display. With 3,000 ANSI lumens and no need for complicated lamp replacements, the LS510WH serves as a cost-effective presentation solution for both education and enterprise organizations. Experience stunning images with breathtaking colors for boardrooms, lecture halls and other public spaces on a long-lasting projection solution equipped with 125% Rec. 709 technology. Enjoy convenient features like instant power on/off, streamlined software updates and flexible setup.

Specifications

More Information

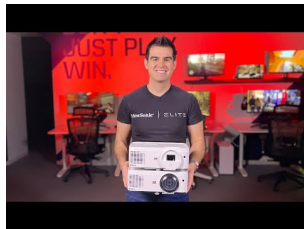
UPC

766907018097

Light Source	LED
Display Resolution	WXGA (1280x800)
Display Resolution	1280 x 800
Brightness (Lumens)	3,000 ANSI
Screen Size	30 - 300 in. / 0.76 - 7.62 m
Throw Distance	1m-10.98m (100""@3.34m)
Throw Ratio	1.3-1.56
Keystone	Vertical (+/- 40°)
Lens	1.1x optical zoom
Light Source Life, Normal (hours)	30000
Color Depth	1.07 Billion Colors
Dynamic Contrast Ratio	3,000,000:1
Aspect Ratio	16:10
Input Lag	37ms
Frequency Horizontal	15K~102KHz
Frequency Vertical	23-120Hz
PC Resolution (max)	VGA(640 x 480) to Full HD(1920 x 1080)
Mac® Resolution (max)	480i, 480p, 576i, 576p, 720p, 1080i, 1080p
USB 2.0 Type A	1
Ethernet LAN (RJ45)	1
3.5mm Audio Out	1
3.5mm Audio In	1
Control (RS232)	1
HDMI 1.4 (with HDCP 1.4)	1
Internal Speakers	2W (x1)
Voltage	100-120V+/- 10%, 50/60Hz
Consumption (typical)	240W
Stand-by	<0.5W
Physical Controls	Keypad, Power key
On Screen Display	Display, Image, Power Management, Basic, Advanced, System, Information (See user guide for full OSD functionality)
Temperature	32-104° F (0 - 40° C)
Kensington Lock Slot	1
Net (lbs)	5.8
Gross (lbs)	8.3
Net (kg)	2.65

Gross (kg)	3.75
Packaging (in.)	11.5 x 8.7 x 4.5
Physical (in.)	15.2 x 11.8 x 7.4
Packaging (mm)	293 x 221 x 115
Physical (mm)	365 x 300 x 188
Regulations	cTUVus
Package Contents	Projector, power cable, remote control, Quick Start Guide
Warranty	Three-year limited warranty on parts and labor, 1-year limited warranty on the light source, 1st year free Express Exchange® service. (One year Express Exchange Service requires product registration).
Recycle/Disposal	Please dispose of in accordance with local, state or federal laws.

UPC: 766907018097



Contact Sales
ViewSonic.com
 888.881.8781
 email:
salesinfo@viewsonic.com