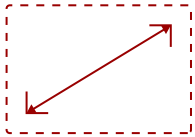


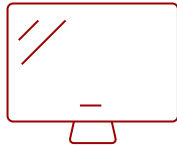
EP1052T-H - 10.1" SCHEDULING PANEL, MEETING ROOM TOUCH CONTROLLER, POE+, NFC, RFID, HID, WI-FI, CAMERA, MIC, GPIO

Key Features

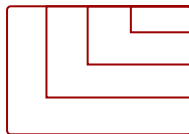
- Simple Scheduling
- Easy and Secure Cabling
- Interactive On-Demand Messaging
- Content Management Software
- Door Lock Control
- Enterprise Secured Solution
- Two-Way Communication
- Simple Yet Powerful
- 1-year Limited Warranty



10
DISPLAY



IPS-Type
PANEL



RESOLUTION



Product Description

The ViewSonic® EP1052T-H is a 10.1" all-in-one interactive digital ePoster that can be used as a video conferencing touch controller, meeting room scheduler and communication signage display. For video conferencing, the EP1052T-H provides one-touch join, easy content-sharing, and a seamless meeting experience across all rooms. When used with certified room scheduling software such as EMS, PLANON, APPSPACE, PRONESTOR and more, the EP1052T-H simplifies meeting room scheduling. The EP1052T-H is also ideal for interactive signage, information kiosks and other on-demand messaging. Filled with user-friendly features like Signage Manager Express software, Power over Ethernet one-wire installation, door lock access control - and so much more - it makes loading, playing and managing content easy and reliable.

Specifications

	More Information
UPC	766907020182
Screen Size	10
Viewable Area (in.)	10.1
Display Resolution	1280 x 800
Light Source	LED
Orientation	Landscape / Portrait
Static Contrast Ratio	1,000:1
Brightness	350 cd/m2
Colors	16.7M
Viewing Angles	160° horizontal, 160° vertical
Backlight Life (Hours)	10,000
Response Time (Typical GTG)	16ms
Panel Surface	Anti-glare, Hard coating (3H)
Panel Type	IPS-Type
Operation Rating	16/7
Microphone	Yes
Internal Speakers	2W (x2)
3.5mm Audio Out	1
3.5mm Mic In	1
Ethernet LAN (RJ45)	1
USB 2.0 Type A	2
Micro USB	1
Micro SD Card Slot	1
DC Jack (12V/4A)	1
GPIO	1
Media Player Type	Yes
CPU	Octa-core ARM Cortex-A53
Operating System	Android™ 9.0
RAM	2GB
Storage Capacity	16GB
Storage Type	eMMC
Touch Technology	Capacitive
Touch Points	10-Point Touch

Voltage	AC 100-240V (universal), 50-60Hz
Consumption (max)	20W
Consumption (typical)	16W
Stand-by	<2W
Temperature	32-104° F (0 - 40° C)
Humidity (non-condensing)	10-85%
Ethernet LAN	10/100/1000 Mbps
Wifi	802.11ac (2.4GHz/5GHz)
VESA Compatible	75 x 75 mm
Gross (lbs)	3.2
Net (lbs)	2.3
Gross (kg)	1.45
Net (kg)	0.92
Packaging (in.)	18.9 x 11.0 x 13.8
Physical (in.)	10.28 x 7.12 x 1.14
Packaging (mm)	480 x 280 x 350
Physical (mm)	261 x 181 x 29
Regulations	CE / FCC / RoHS
Package Contents	EP1052T-H, Quick Start Guide, Flush Wall Mount Bracket, Glass Mount 3M Tape, Mounting Sheet, Cover Sheet, Screws
Recycle/Disposal	Please dispose of in accordance with local, state or federal laws.
Warranty	One-year limited warranty on parts and labor

UPC: 766907020182



Contact Sales

ViewSonic.com

888.881.8781

email:

salesinfo@viewsonic.com