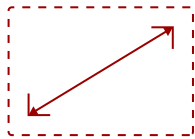


EP1052T-L - 10.1" SCHEDULING PANEL, MEETING ROOM TOUCH CONTROLLER, POE+, NFC, RFID, WI-FI

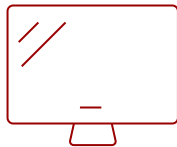
## Key Features

---

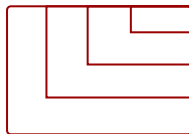
- Simple Scheduling
- Easy and Secure Cabling
- Interactive On-Demand Messaging
- Content Management Software
- Enterprise Secured Solution
- Simple Yet Powerful
- 1-year Limited Warranty



10  
**DISPLAY**



IPS-Type  
**PANEL**



**RESOLUTION**



## Product Description

---

The ViewSonic® EP1052T-L is a 10.1" all-in-one interactive digital ePoster that can be used as a video conferencing touch controller, meeting room scheduler and communication signage display. For video conferencing, the EP1052T-L provides one-touch join, easy content-sharing, and a seamless meeting experience across all rooms. When used with certified room scheduling software such as EMS, PLANON, APPSPACE, PRONESTOR and more, the EP1052T-L simplifies meeting room scheduling. The EP1052T-L is also ideal for interactive signage, information kiosks and other on-demand messaging. Filled with user-friendly features like Signage Manager Express software, Power over Ethernet one-wire installation - and so much more - it makes loading, playing and managing content easy and reliable.

# Specifications

---

	More Information
<b>UPC</b>	766907020168
<b>Screen Size</b>	10
<b>Viewable Area (in.)</b>	10.1
<b>Display Resolution</b>	1280 x 800
<b>Light Source</b>	LED
<b>Orientation</b>	Landscape / Portrait
<b>Static Contrast Ratio</b>	1,000:1
<b>Brightness</b>	350 cd/m2
<b>Colors</b>	16.7M
<b>Viewing Angles</b>	160° horizontal, 160° vertical
<b>Backlight Life (Hours)</b>	10,000
<b>Response Time (Typical GTG)</b>	16ms
<b>Panel Surface</b>	Anti-glare, Hard coating (3H)
<b>Panel Type</b>	IPS-Type
<b>Operation Rating</b>	16/7
<b>Internal Speakers</b>	2W (x2)
<b>3.5mm Audio Out</b>	1
<b>3.5mm Mic In</b>	1
<b>Ethernet LAN (RJ45)</b>	1
<b>USB 2.0 Type A</b>	1
<b>Micro USB</b>	1
<b>Micro SD Card Slot</b>	1
<b>DC Jack (12V/4A)</b>	1
<b>Media Player Type</b>	Yes
<b>CPU</b>	Octa-core ARM Cortex-A53
<b>Operating System</b>	Android™ 9.0
<b>RAM</b>	2GB
<b>Storage Capacity</b>	16GB
<b>Storage Type</b>	eMMC
<b>Touch Technology</b>	Capacitive
<b>Touch Points</b>	10-Point Touch
<b>Voltage</b>	AC 100-240V (universal), 50-60Hz
<b>Consumption (max)</b>	20W

<b>Consumption (typical)</b>	16W
<b>Stand-by</b>	<2W
<b>Temperature</b>	32-104° F (0 - 40° C)
<b>Humidity (non-condensing)</b>	10-85%
<b>Ethernet LAN</b>	10/100/1000 Mbps
<b>Wifi</b>	802.11ac (2.4GHz/5GHz)
<b>VESA Compatible</b>	75 x 75 mm
<b>Gross (lbs)</b>	3.2
<b>Net (lbs)</b>	2.3
<b>Gross (kg)</b>	1.45
<b>Net (kg)</b>	0.92
<b>Packaging (in.)</b>	18.9 x 11.0 x 13.8
<b>Physical (in.)</b>	10.28 x 7.12 x 1.14
<b>Packaging (mm)</b>	480 x 280 x 350
<b>Physical (mm)</b>	261 x 181 x 29
<b>Regulations</b>	CE / FCC / RoHS
<b>Package Contents</b>	EP1052T-L, Quick Start Guide, Flush Wall Mount Bracket, Glass Mount 3M Tape, Mounting Sheet, Cover Sheet, Screws
<b>Recycle/Disposal</b>	Please dispose of in accordance with local, state or federal laws.
<b>Warranty</b>	One-year limited warranty on parts and labor

UPC: 766907020168



**Contact Sales**

[ViewSonic.com](http://ViewSonic.com)

888.881.8781

email:

[salesinfo@viewsonic.com](mailto:salesinfo@viewsonic.com)