

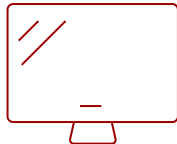
# MYPODIUM™ ID2456-C1 - 24" INTERACTIVE PEN DISPLAY WITH NMP760 CHROMEBOX

## Key Features

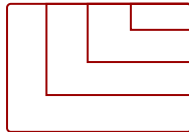
- All-in-One Solution
- Advanced Touch Interactivity and Accurate Handwriting
- Chromebox



24  
DISPLAY



PANEL



RESOLUTION



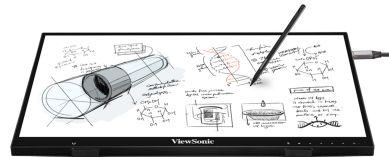
PCAP  
touch



4096 levels  
of pressure sensitivity



MPP2.0  
active stylus



EFFORTLESS PRECISION

## Product Description

Ideal for education environments, this digital podium bundle includes a myPodium™ ID2456 24" interactive pen display and a NMP760 Chromebox that are ideal for a digital podium setup. Simply connect the myPodium™ ID2456 to the Chromebox and an existing classroom projector or large format display. The myPodium™ ID2456 interactive pen display allows teachers to annotate directly on their presentations, sketch ideas and manipulate content. Meanwhile, the students can view the lesson on the connected projection screen or digital display at the front of the classroom.

## Specifications

### More Information

Internal Speakers

3W (x2)

<b>HDMI 1.4 In</b>	1
<b>HDMI Out</b>	1
<b>VGA</b>	1
<b>3.5mm Audio In</b>	1
<b>3.5mm Audio Out</b>	1
<b>USB 3.0</b>	2
<b>USB 3.1 Type C</b>	1
<b>USB B Touch Port</b>	1
<b>Intel® OPS Slot In (80-pin)</b>	1
<b>Voltage</b>	100-240 VAC
<b>Consumption (typical)</b>	33
<b>Stand-by</b>	<5
<b>Temperature</b>	32-104° F (0 - 40° C)
<b>Humidity (non-condensing)</b>	10-85%
<b>Touch Technology</b>	Capacitive
<b>Touch Points</b>	10-Point Touch
<b>Net (lbs)</b>	11
<b>Gross (lbs)</b>	17
<b>Net (kg)</b>	4.99
<b>Gross (kg)</b>	7.71
<b>Packaging (in.)</b>	25.39 x 4.92 x 16.14
<b>Physical (in.)</b>	13.11 x 1.7 x 21.44
<b>Packaging (mm)</b>	644.9 x 124.9 x 409.9
<b>Physical (mm)</b>	332.9 x 43.18 x 544.6
<b>VESA Compatible</b>	100 x 100 mm
<b>Warranty</b>	3-year limited warranty on parts, labor and backlight, onsite warranty
<b>Recycle/Disposal</b>	Please dispose of in accordance with local, state or federal laws.
<b>Package Contents</b>	ID2456 display, Power cable, Type-C cable, HDMI cable, USB cable, MPP2.0 ACP, Pen tether, Pen tip, Quick Start Guide
<b>Regulations</b>	cTUVus, FCC, ENERGY STAR 7.0, Mexico Energy, CE, CB, RoHS, ErP, WEEE
<b>Display Type</b>	LCD
<b>Screen Size</b>	24
<b>Viewable Area (in.)</b>	24
<b>Display Resolution</b>	1920 x 1080
<b>Aspect Ratio</b>	16:9
<b>Static Contrast Ratio</b>	1,000:1

<b>Brightness</b>	350 cd/m2
<b>Response Time (Typical GTG)</b>	14ms
<b>Viewing Angles</b>	178° horizontal, 178° vertical
<b>Panel Surface</b>	Anti-Glare type, Hardness 6H



**Contact Sales**  
[ViewSonic.com](https://www.viewsonic.com)

888.881.8781  
email:  
[salesinfo@viewsonic.com](mailto:salesinfo@viewsonic.com)