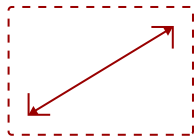


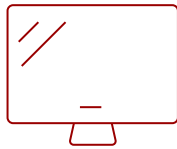
CDE4330 - 43" DISPLAY, 3840 X 2160 RESOLUTION, 450 CD/M2 BRIGHTNESS, 24/7

Key Features

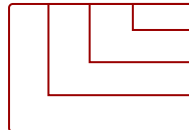
- Multiple Ways To Connect And Share Content
- AV Control System Interoperability
- Centralized Control Device Management
- Easy Content Sharing
- Superb And Stunning Picture Quality
- Powerful Secured Embedded Platform



43
DISPLAY



MVA
PANEL



RESOLUTION



Product Description

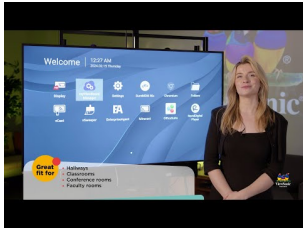
Streamline your presentations, enhance collaboration, and succeed with the ViewSonic CDE4330 digital display. Whether your employees are in office or working remotely, they will enjoy fast and easy ways to communicate thanks to ViewBoard Cast™ screen sharing software and the myViewBoard® Display app that allows up to four participants to connect and share content. For maximum visibility even in rooms with high ambient light, these displays offer stunning 4K Ultra HD resolution, high brightness and a 25% high haze anti-glare screen. What's more, these all-in-one displays simplify installation and maintenance thanks to a powerful secured embedded platform that delivers smooth content playback without the need for a PC or media player.

Specifications

| | More Information |
|------------------------------------|---|
| UPC | 766907017465 |
| OS | Android 11.0 |
| Media Player Type | Media Player |
| GPU | G52MP2 |
| CPU | Amlogic T982 / 1.9GHz CPU |
| CPU Processor Speed | Quad-core, 1.5GHz |
| Memory | 4GB DDR4 |
| Storage | 32GB |
| Built-in Software | HTML5, JavaScript and CSS |
| Internal Speakers | 10W (x2) |
| HDMI 2.1 (HDCP 2.2) In | 2 |
| Audio-out (HDMI ARC) | 1 |
| HDMI 2.0 Out | 1 |
| SPDIF Audio Out | 1 |
| USB 3.0 | 1 |
| USB 2.0 | 1 |
| USB Type C | 1 |
| RS232 | 1 |
| Ethernet LAN (RJ45) | 1 |
| WIFI Module Slot | 1 |
| Intel® OPS Slot In (80-pin) | 1 |
| Voltage | 100-240 VAC +/- 10% Wide Range, 50-60Hz +/-3 Hz |
| Consumption (max) | 215W |
| Consumption (typical) | 115W |
| Stand-by | <0.5W |
| Temperature | 32-104° F (0 - 40° C) |
| Humidity (non-condensing) | 20-80% |
| Net (lbs) | 14.55 |
| Gross (lbs) | 22.93 |
| Net (kg) | 6.6 |
| Gross (kg) | 10.4 |
| Packaging (in.) | 41.57 x 26.46 x 6.14 |
| Physical (in.) | 37.98 x 21.75 x 2.81 |

| | |
|------------------------------------|--|
| Packaging (mm) | 1056 x 672 x 156 |
| Physical (mm) | 964.6 x 552.5 x 71.4 |
| VESA Compatible | 200 x 200 mm |
| Screw Size | M6 |
| Screw Length (mm) | 25 |
| AV Control | AMX Certified, Extron Certified, Crestron Connected |
| Warranty | Three-year limited warranty on parts, labor and backlight |
| Recycle/Disposal | Please dispose of in accordance with local, state or federal laws. |
| Package Contents | CDE4330 Wireless Presentation Display, Remote control with batteries, Quick Start Guide, Power cable, HDMI Cable, USB-C cable, Wall Mount Screws and RS232 cable |
| Regulations | cTUVus, FCC, Energy Star 8.0, EPEAT, RoHS, Mexico NOM, Mexico Energy |
| Ethernet LAN | 10/100/1000 MB |
| Wifi | Optional VB-WIFI-001 |
| Bluetooth | Optional VB-WIFI-001 |
| Display Type | LCD |
| Screen Size | 43 |
| Viewable Area (in.) | 42.5 |
| Orientation | Landscape / Portrait |
| Colors | 1.07B |
| Color Space Support | 8 bit + FRC |
| Light Source | DLED |
| Display Resolution | 3840 x 2160 |
| Refresh Rate | 60Hz |
| Panel Type | MVA |
| Aspect Ratio | 16:9 |
| Static Contrast Ratio | 1,200:1 |
| Dynamic Contrast Ratio | 5,000:1 |
| Backlight Life (Hours) | 50,000 |
| Brightness | 450 cd/m2 |
| Response Time (Typical GTG) | 8ms |
| Bezel Width (in.) | 0.79 (uniform) |
| Bezel Width (mm) | 20 (uniform) |
| Viewing Angles | 178° horizontal, 178° vertical |
| Panel Surface | Anti-Glare type, Hard-coating (3H), Haze 25% |
| Operation Rating | 24/7 |

UPC: 766907017465



Contact Sales
ViewSonic.com

888.881.8781

email:

salesinfo@viewsonic.com