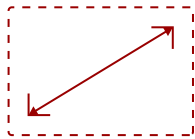


## VA2715-2K-MHD - 27" 1440P LED MONITOR WITH HDMI, DISPLAYPORT AND ADAPTIVE SYNC

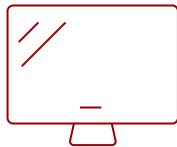
### Key Features

---

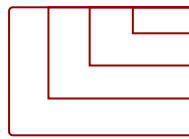
- 27 Inch 2K QHD (2560x1440p) LED monitor with thin bezels and 75Hz refresh rate
- Flicker-Free technology and Blue Light Filter for reduced eye fatigue
- VESA Adaptive Sync technology enables smooth frame rates to aid you in battle
- Optimized view settings offer "Game," "Movie," "Web," "Text," and "Mono" presets
- The VA2715-2K-MHD supports laptops, PCs, Macs and more with HDMI and DisplayPort inputs



27  
**DISPLAY**



MVA  
**PANEL**



2560x1440  
**RESOLUTION**



- 2x 2-watt integrated speakers
- 100x100mm VESA compatible mount
- x2 HDMI 1.4
- x1 DisplayPort In
- x1 Audio (Out)

**FUTURE-PROOF INPUTS**  
For flexible connectivity

### Product Description

---

The ViewSonic® VA2715-2K-MHD is a 27" QHD monitor that delivers solid multimedia features at a great value with flexible connectivity, wide-angle viewing, and amazing screen performance. Featuring 2560 x 1440 resolution and a frameless design, this monitor provides a near-seamless viewing experience ideal for multi-monitor setups. Whether for working at the office, or enjoying entertainment at home, the VA2715-2K-MHD also features DisplayPort and HDMI ports for flexible connectivity to PCs, laptops, and other multimedia devices. In addition, a 3-year limited warranty, along with one of the industry's best pixel performance policies, makes the VA2715-2K-MHD a great overall value choice.

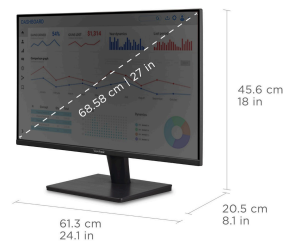
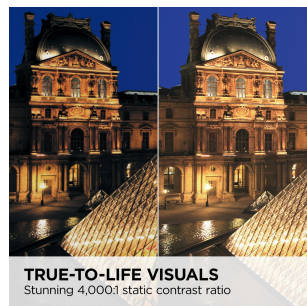
### Specifications

---

|                                  |   |
|----------------------------------|---|
| <b>UPC</b>                       | 766907014662  |
| <b>Screen Size</b>               | 27  |
| <b>Viewable Area (in.)</b>       | 27  |
| <b>Panel Type</b>                | MVA   |
| <b>Display Resolution</b>        | 2560 x 1440   |
| <b>Display Resolution</b>        | WQHD (2560x1440)  |
| <b>Static Contrast Ratio</b>     | 4,000:1   |
| <b>Dynamic Contrast Ratio</b>    | 50,000,000:1  |
| <b>Light Source</b>              | LED   |
| <b>Brightness</b>                | 250 cd/m2   |
| <b>Colors</b>                    | 16.7M   |
| <b>Aspect Ratio</b>              | 16:9  |
| <b>Response Time (GTG w/OD)</b>  | 5ms   |
| <b>Viewing Angles</b>            | 178° horizontal, 178° vertical  |
| <b>Backlight Life (Hours)</b>    | 30,000  |
| <b>Panel Surface</b>             | Anti-glare, Hard coating (3H)   |
| <b>Refresh Rate</b>              | 75Hz  |
| <b>PC Resolution (max)</b>       | 2560x1440   |
| <b>Mac® Resolution (max)</b>     | 2560x1440   |
| <b>3.5mm Audio Out</b>           | 1   |
| <b>HDMI 1.4 In</b>               | 2   |
| <b>DisplayPort</b>               | 1   |
| <b>Internal Speakers</b>         | 2W (x2)   |
| <b>Eco Mode (Conserve)</b>       | 19W   |
| <b>Eco Mode (optimized)</b>      | 24W   |
| <b>Consumption (typical)</b>     | 29W   |
| <b>Consumption (max)</b>         | 31W   |
| <b>Voltage</b>                   | 100-240 VAC, 50-60Hz  |
| <b>Stand-by</b>                  | 0.5W  |
| <b>Power Supply</b>              | External  |
| <b>Cable Organization</b>        | No  |
| <b>Kensington Lock Slot</b>      | 1   |
| <b>Physical Controls</b>         | U, R, D, L, EN (power)  |
| <b>On Screen Display</b>         | Input Select, Audio Adjust, ViewMode, Color Adjust, Manual Image Adjust, Setup Menu |
| <b>Temperature</b>               | 32-104° F (0 - 40° C)   |
| <b>Humidity (non-condensing)</b> | 20-90%  |

|                                     |   |
|-------------------------------------|---|
| <b>VESA Compatible</b>              | 100 x 100 mm  |
| <b>Frequency Horizontal</b>         | 15 ~ 120KHz   |
| <b>Frequency Vertical</b>           | 24 ~ 75Hz   |
| <b>Tilt (Forward/Back)</b>          | 5° / 20°  |
| <b>Net (lbs)</b>                    | 7.9   |
| <b>Net Without Stand (lbs)</b>      | 6.8   |
| <b>Gross (lbs)</b>                  | 11.0  |
| <b>Net (kg)</b>                     | 3.6   |
| <b>Net Without Stand (kg)</b>       | 3.1   |
| <b>Gross (kg)</b>                   | 5.0   |
| <b>Packaging (in.)</b>              | 27.1 x 17.6 x 5.0   |
| <b>Physical (in.)</b>               | 24.1 x 18.0 x 8.1   |
| <b>Physical Without Stand (in.)</b> | 24.1 x 14.2 x 1.6   |
| <b>Packaging (mm)</b>               | 688.0 x 448.0 x 128.0   |
| <b>Physical (mm)</b>                | 613.0 x 456.0 x 205.0   |
| <b>Physical Without Stand (mm)</b>  | 613.0 x 361.0 x 40.0  |
| <b>Regulations</b>                  | RoHS, WEEE, BSMI, RCM, VCCI, PSE  |
| <b>Package Contents</b>             | VA2715-2K-MHD x1, HDMI Cable (v1.4; Male-Male) x1, AC/DC Adapter x1, Quick Start Guide x1 |
| <b>Recycle/Disposal</b>             | Please dispose of in accordance with local, state or federal laws.                        |
| <b>Warranty</b>                     | Three-year limited warranty on parts, labor and backlight                                 |

UPC: 766907014662



**WQHD (2560x1440p) RESOLUTION**

**Contact Sales**  
[ViewSonic.com](http://ViewSonic.com)  
 888.881.8781  
 email:  
[salesinfo@viewsonic.com](mailto:salesinfo@viewsonic.com)