

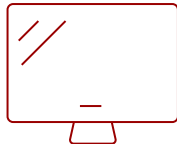
IFP6562 - 65" 4K TOUCH ENABLED VIEWBOARD SMART DISPLAY

Key Features

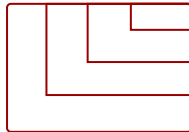
- **ULTRA HD RESOLUTION:** 65 Inch 4K Ultra HD (3840x2160p) with a bezel-less PCAP Touch Display
- **TOUCH PRECISION:** 20-point PCAP touch technology lets multiple users write on the screen with their fingers and active styluses
- **ONE CABLE SOLUTION:** Convenient USB-C for connected devices
- **BE HEARD:** Built-in Microphone Array with echo cancellation and noise reduction technology
- **POWERFUL COMPUTING:** Optional addition of Slot-in PC provides increased functionality and speed
- **REMOTE MANAGEMENT:** Schedule updates and monitor device status with the built-in myViewBoard® Manager software
- **PEACE OF MIND:** Industry-leading 3-year standard warranty with optional extensions and robust support services



65
DISPLAY



PANEL



RESOLUTION



Product Description

From executive boardrooms to interactive huddle spaces, the ViewSonic® ViewBoard® IFP6562 enables limitless collaboration and endless innovation. Designed to help teams connect, collaborate, and create, this next-generation digital whiteboard delivers exactly what you need to move your ideas forward. A premium, state-of-the-art design features a bezel-less PCAP (projected capacitive) touchscreen with incredible 4K Ultra HD resolution. This highly accurate interactive screen provides for an incredibly natural and responsive handwriting experience. Using fingers, styluses, or both, multiple users can simultaneously write or draw on the huge 65" ViewBoard panel. What's more, meetings and presentations start fast thanks to convenient one-wire USB-C connectivity.

Specifications

UPC	766907012064
OS	Android 8.0
CPU	ARM Quad Core Cortex A73
CPU Processor Speed	1.2GHz
Memory	3GB
Storage	32GB
Internal Speakers	12W (x2)
Subwoofer	15W (x1)
HDMI 2.0 In	4
HDMI 4K Out	1
3.5mm Audio Out	1
SPDIF Audio Out	1
USB 3.0	5
USB 2.0	1
USB 3.1 Type C	1
Slot-in PC Slot	1
USB B Touch Port	2
RS232	1
Ethernet LAN (RJ45)	2
WIFI Module Slot	1
Intel® OPS Slot In (80-pin)	1
Voltage	100-240 VAC
Consumption (max)	390W
Consumption (typical)	115W
Stand-by	<0.5W
Temperature	32-104° F (0 - 40° C)
Humidity (non-condensing)	10-90%
Touch Technology	Projective Capacitive
Touch Points	Windows: 20, Android: 20
Tip Detection	Finger or Active Pen
Net (lbs)	82.5
Gross (lbs)	107.8
Net (kg)	37.4
Gross (kg)	48.9
Packaging (in.)	63.3 x 39.8 x 8.5
Physical (in.)	58.7 x 35.7 x 3.1

Packaging (mm)	1607.0 x 1010.0 x 215.0
Physical (mm)	1492.0 x 907.0 x 78.0
VESA Compatible	600 x 400 mm
Warranty	3-year limited warranty on parts, labor and backlight, onsite warranty
Recycle/Disposal	Please dispose of in accordance with local, state or federal laws.
Package Contents	IFP6562 display, power cable, HDMI cable, USB cable Type C, USB Cable for Touch, Passive Stylus x 2, RS232 Adapter, Clamp x 5, remote control with batteries, Camera plate, screw x 8, Quick Start Guide
Regulations	CTUVus, FCC, Energy 8.0, EPEAT, Mexico, CE, CB, ErP, REACH, UKCA
Ethernet LAN	(10/100/1000M) (USB Type-C & Android 10/100, PC 10/100/1000)
Display Type	LCD
Screen Size	65
Viewable Area (in.)	64.5
Light Source	LED
Display Resolution	3840 x 2160
Aspect Ratio	16:9
Static Contrast Ratio	5,000:1
Backlight Life (Hours)	50,000
Brightness	350 cd/m2
Response Time (Typical GTG)	8ms
Viewing Angles	178° horizontal, 178° vertical
Panel Surface	Anti-glare 9H tempered glass

UPC: 766907012064



Contact Sales

ViewSonic.com

888.881.8781

email:

salesinfo@viewsonic.com