

## IFP5550 - 55" 4K TOUCH ENABLED VIEWBOARD SMART DISPLAY

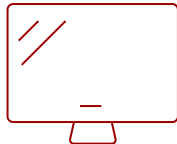
### Key Features

---

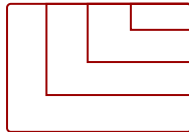
- **ULTRA HD RESOLUTION:** 55 Inch 4K Ultra HD (3840x2160p) interactive display
- **ADVANCED TOUCH:** 20-point multi-touch lets users write on the display with their fingers and stylus pens
- **INTEGRATED SOFTWARE:** The myViewBoard suite includes Whiteboard, ViewBoard Cast, and more for better engagement
- **BETTER SOUND:** Built-in 45W stereo soundbar delivers optimal sound
- **FLEXIBLE CONNECTIVITY:** Include powerful quad-core processor and versatile connectivity options (HDMI,VGA, RJ45, and USB ports)
- **REMOTE MANAGEMENT:** Schedule updates and monitor device status with the built-in myViewBoard® Manager software
- **PEACE OF MIND:** Industry-leading 3-year standard warranty with optional extensions and robust support services



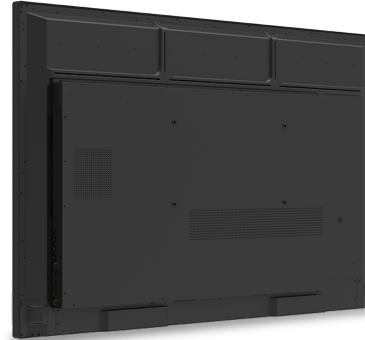
55  
DISPLAY



PANEL



RESOLUTION



### Product Description

---

Featuring 4K Ultra HD resolution and an advanced, next-generation touchscreen, the ViewSonic® ViewBoard® IFP5550 delivers incredible collaborative capabilities for 21st century boardrooms and classrooms. With integrated myViewBoard® annotation software and ViewBoard Cast streaming software, content creation and sharing has never been easier. What's more, this ENERGY STAR certified display delivers optional slot-in PC capability for more computing-intensive interactive applications. A VESA-compatible design allows for installation on a wall mount, or on an optional trolley cart for more flexible installation in classrooms and meeting rooms.

### Specifications

---

[More Information](#)

UPC

766907006360

<b>OS</b>	ViewBoard OS (embedded Android 8)
<b>GPU</b>	ARM Mali-G51
<b>CPU</b>	ARM Quad Core A73 + A53
<b>CPU Processor Speed</b>	A73: 1.1GHz, A53: 1.5GHz
<b>Memory</b>	3GB
<b>Storage</b>	32GB
<b>Internal Speakers</b>	10W (x2)
<b>Subwoofer</b>	15W (x1)
<b>HDMI 2.0 In</b>	3
<b>VGA</b>	1
<b>Composite RCA</b>	1
<b>3.5mm Audio In</b>	1
<b>3.5mm Audio Out</b>	1
<b>SPDIF Audio Out</b>	1
<b>USB 3.0</b>	4
<b>USB 2.0</b>	3
<b>Slot-in PC Slot</b>	1
<b>USB B Touch Port</b>	2
<b>RS232</b>	1
<b>Ethernet LAN (RJ45)</b>	1
<b>WIFI Module Slot</b>	1
<b>Intel® OPS Slot In (80-pin)</b>	1
<b>Voltage</b>	100-240 VAC
<b>Consumption (max)</b>	350W
<b>Consumption (typical)</b>	81W
<b>Stand-by</b>	<0.5W
<b>Temperature</b>	32-104° F (0 - 40° C)
<b>Humidity (non-condensing)</b>	10-90%
<b>Touch Technology</b>	Infrared
<b>Touch Points</b>	Windows: 20, Android: 20
<b>Tip Detection</b>	Dual tips, 3mm and 8mm
<b>Net (lbs)</b>	68.34
<b>Gross (lbs)</b>	85.98
<b>Net (kg)</b>	31.0
<b>Gross (kg)</b>	39.0
<b>Packaging (in.)</b>	56.2 x 34.6 x 8.7

<b>Physical (in.)</b>	49.9 x 30.4 x 3.3
<b>Packaging (mm)</b>	1428.0 x 878.0 x 220.0
<b>Physical (mm)</b>	1268.0 x 773.0 x 85.0
<b>VESA Compatible</b>	400 x 200 mm
<b>Warranty</b>	3-year limited warranty on parts, labor and backlight, onsite warranty
<b>Recycle/Disposal</b>	Please dispose of in accordance with local, state or federal laws.
<b>Package Contents</b>	IFP5550 display, stylus pen x 2, power cable, HDMI cable, USB cable, remote control with batteries, Camera plate, M8 screw x 8, Quick Start Guide
<b>Regulations</b>	cTUVus, FCC, ENERGY STAR, Mexico Energy, CE, CB, RoHS, ErP, WEEE
<b>Ethernet LAN</b>	(10/100/1000M) (Android 10/100, PC 10/100/1000)
<b>Display Type</b>	LCD
<b>Screen Size</b>	55
<b>Viewable Area (in.)</b>	54.6
<b>Light Source</b>	LED
<b>Display Resolution</b>	3840 x 2160
<b>Refresh Rate</b>	60Hz
<b>Aspect Ratio</b>	16:9
<b>Static Contrast Ratio</b>	1,200:1
<b>Dynamic Contrast Ratio</b>	5,000:1
<b>Backlight Life (Hours)</b>	50,000
<b>Brightness</b>	350 cd/m2
<b>Response Time (Typical GTG)</b>	8ms
<b>Viewing Angles</b>	178° horizontal, 178° vertical
<b>Panel Surface</b>	9H
<b>Operation Rating</b>	16/7

UPC: 766907006360



### Contact Sales

[ViewSonic.com](http://ViewSonic.com)

888.881.8781

email:

[salesinfo@viewsonic.com](mailto:salesinfo@viewsonic.com)