

## TD2455 - 24" 1080P IPS 10-POINT TOUCH MONITOR WITH DUAL-HINGE ERGONOMICS, USB C, HDMI, DP

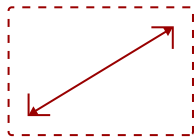
### Key Features

---

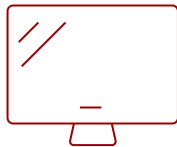
- 24 Inch Full HD (1920x1080p) IPS touch monitor with thin bezels and 60Hz refresh rate
- Robust 10-point Projected Capacitive (PCAP) technology provides a responsive experience with every tap, pinch, and swipe
- Ergonomic tiltable dual-hinge design maximizes comfort and productivity
- USB-C connectivity for fast data, audio and video transfer, and 60W charging over one cable



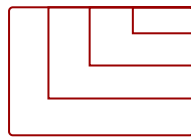
24-Inch Full HD (1920x1080p) Resolution



24  
DISPLAY



IPS  
PANEL



1920x1080  
RESOLUTION



### Product Description

---

With responsive, in-cell touch technology and an advanced ergonomic design, the ViewSonic® TD2455 touch display delivers hands-on control for more productive workspaces and collaborative classrooms. This 24" (23.8" viewable) Full HD display features a SuperClear® IPS panel and a three-sided ultra-thin bezel design that lets you see more and do more with incredible images and expansive screen real estate. An intuitive 10-point Projected Capacitive (PCAP) touch screen delivers a smooth and responsive experience with every tap, pinch, and swipe. Its advanced ergonomic design delivers versatility and comfort for office use, check-in applications, and more. With DisplayPort out connectivity, the TD2455 easily connects to a projector or interactive whiteboard, making it ideal for use as a podium touch display option in classrooms and lecture halls. An included stylus pen lets you write or draw on screen, and easily attaches to the magnetic base of the display stand for secure storage and quick access. So whether used on its own on office desktops, as a collaboration station in corporate huddle spaces, or as a front-of-classroom interactive teaching hub, the TD2455 helps to boost efficiency and productivity.

# Specifications

	More Information
<b>UPC</b>	766907004960
<b>Screen Size</b>	24
<b>Viewable Area (in.)</b>	23.8
<b>Panel Type</b>	IPS
<b>Display Resolution</b>	1920 x 1080
<b>Display Resolution</b>	Full HD (1920x1080)
<b>Static Contrast Ratio</b>	1,000:1
<b>Dynamic Contrast Ratio</b>	50,000,000:1
<b>Light Source</b>	LED
<b>Brightness</b>	250 cd/m2
<b>Colors</b>	16.7M
<b>Color Space Support</b>	6 bit + Hi-FRC
<b>Aspect Ratio</b>	16:9
<b>Response Time (Typical GTG)</b>	14ms
<b>Response Time (GTG w/OD)</b>	6ms
<b>Viewing Angles</b>	178° horizontal, 178° vertical
<b>Backlight Life (Hours)</b>	30,000
<b>Panel Surface</b>	Anti-Glare type, Hard-coating (3H), Haze 25%
<b>Refresh Rate</b>	60Hz
<b>PC Resolution (max)</b>	1920x1080
<b>Mac® Resolution (max)</b>	1920x1080
<b>USB Type A</b>	2
<b>USB Type B</b>	1
<b>USB Type C</b>	60W x 1
<b>HDMI 1.4 In</b>	1
<b>DisplayPort</b>	1
<b>DisplayPort Out</b>	1
<b>Touch Technology</b>	Projective Capacitive
<b>Touch Points</b>	10-Point Touch
<b>Touch Compatibility</b>	Supports Windows 7/8/10, Linux Kernel Ubuntu 18.04/19.04, and Chromebox
<b>Internal Speakers</b>	2W (x2)
<b>Eco Mode (Conserve)</b>	11.3
<b>Eco Mode (optimized)</b>	14.5

<b>Consumption (typical)</b>	19.6
<b>Consumption (max)</b>	23.6
<b>Voltage</b>	AC 100-240V (universal), 50-60Hz
<b>Stand-by</b>	0.3W
<b>Power Supply</b>	Internal
<b>Cable Organization</b>	No
<b>Kensington Lock Slot</b>	1
<b>Physical Controls</b>	1,2,3,4,5,6 [Power]
<b>On Screen Display</b>	Auto image adjust, Contrast/Brightness, Input Select, Audio adjust, Color Adjust, Information, Manual Image Adjust, Setup Menu, Memory Recall
<b>Temperature</b>	32-104° F (0 - 40° C)
<b>Humidity (non-condensing)</b>	20-90%
<b>VESA Compatible</b>	100 x 100 mm
<b>Frequency Horizontal</b>	15 ~ 82KHz
<b>Frequency Vertical</b>	50 ~ 75Hz
<b>Digital Sync</b>	TMDS for HDMI (v1.4), Micro-Packet for DisplayPort (v1.2), and USB Type C
<b>Tilt (Forward/Back)</b>	5° / 60°
<b>Net (lbs)</b>	14.2
<b>Net Without Stand (lbs)</b>	8.2
<b>Gross (lbs)</b>	18.6
<b>Net (kg)</b>	6.4
<b>Net Without Stand (kg)</b>	3.7
<b>Gross (kg)</b>	8.4
<b>Packaging (in.)</b>	24.3 x 16.3 x 11.2
<b>Physical (in.)</b>	21.2 x 16.8 x 11.3
<b>Physical Without Stand (in.)</b>	21.2 x 12.6 x 2.0
<b>Packaging (mm)</b>	617.0 x 415.0 x 285.0
<b>Physical (mm)</b>	539.0 x 426.0 x 286.0
<b>Physical Without Stand (mm)</b>	539.0 x 320.0 x 52.0
<b>Regulations</b>	cTUVus, FCC-B, ICES003, Energy Star, EPEAT, CEC, MX-CoC, Mexico Energy
<b>Package Contents</b>	TD2455 Display, Power Cable, DP Cable, USB 3.2 Cable, Passive Touch Pen, Passive Touch Pen Head, Quick Start Guide
<b>Recycle/Disposal</b>	Please dispose of in accordance with local, state or federal laws.
<b>Warranty</b>	Three-year limited warranty on parts, labor and backlight

UPC: 766907004960



**ADVANCED ERGONOMICS  
DUAL-HINGE DESIGN**

**Contact Sales**  
[ViewSonic.com](http://ViewSonic.com)  
888.881.8781  
email:  
[salesinfo@viewsonic.com](mailto:salesinfo@viewsonic.com)