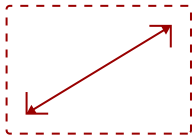


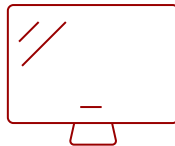
IFP7550-LA-V3

Key Features

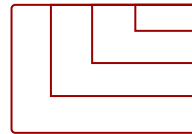
- Ultra HD Resolution
- myViewboard™ Digital Whiteboarding Solution
- ViewBoard Cast Content Sharing Software



75
DISPLAY



PANEL



RESOLUTION

Product Description

ViewBoard IFP7550-LA-V3 dual OS includes a built-in Android OS and Windows 10 dual boot operation system for all the interactive needs.

Specifications

More Information


OS	Embedded ViewBoard OS
GPU	ARM Mali450 Quad Core
CPU	ARM Dual Core Cortex A73
CPU Processor Speed	1.2GHz
Memory	2GB
Storage	16GB
Built-in Software	myViewBoard, Chromium browser, Zoom, ViewBoard Cast
Operating System	Windows 10 Pro
CPU	Intel i5-8400 2.8GHz
GPU	Intel UHD Graphics 630
Memory	8GB DDR4
Storage	256GB SSD
Ethernet	10//100/1000
WiFi	802.11 a/b/g/n/ac

Bluetooth	4.0
Connectors	HDMIx1, DPx1, VGAx1, RJ45x1, Audio-inx1, Audio-outx1, USB2.0x2, USB3.0x4, Type-Cx1
Internal Speakers	10W (x2)
Subwoofer	15W (x1)
HDMI 2.0 In	3
HDMI Out	1
VGA	1
Composite RCA	1
3.5mm Audio In	1
3.5mm Audio Out	1
SPDIF Audio Out	1
USB 3.0	2
USB 2.0	4
Slot-in PC Slot	1
USB B Touch Port	2
RS232	1
Ethernet LAN (RJ45)	1
WIFI Module Slot	1
Intel® OPS Slot In (80-pin)	1
Voltage	100-240 VAC
Consumption (max)	350W
Consumption (typical)	138W
Stand-by	<0.5W
On Screen Display	Input, Volume, Backlight, Audio, Screen, Display, Adjust
Remote Control	Volume, Channel, Source, Mute, Back, Input, Menu
Temperature	32-104° F (0 - 40° C)
Humidity (non-condensing)	10-90%
Touch Technology	Infrared
Touch Points	Windows: 20, Android: 20
Net (lbs)	121.0
Gross (lbs)	148.6
Net (kg)	54.9
Gross (kg)	67.4
Packaging (in.)	76.0 x 44.9 x 11.0
Physical (in.)	67.3 x 40.2 x 3.5
Packaging (mm)	1930.0 x 1140.0 x 280.0

Physical (mm)	1710.0 x 1020.0 x 90.0
VESA Compatible	600 x 400 mm
Warranty	3-year limited warranty on parts, labor and backlight, onsite warranty
Recycle/Disposal	Please dispose of in accordance with local, state or federal laws.
Package Contents	IFP7550 display, VPC15-WP-4, stylus pen x 2, power cable, remote control with batteries, ViewSonic Wizard CD (User Guide), Quick Start Guide
Regulations	cTUVus, FCC, ENERGY STAR 7.0, Mexico Energy, CE, CB, RoHS, ErP, WEEE
Ethernet LAN	(10/100/1000M) (Android 10/100, PC 10/100/1000)
Screen Size	75
Viewable Area (in.)	75
Light Source	LED
Display Resolution	3840 x 2160
Aspect Ratio	16:9
Static Contrast Ratio	1,200:1
Backlight Life (Hours)	50,000
Brightness	350 cd/m2
Response Time (Typical GTG)	8ms
Viewing Angles	178° horizontal, 178° vertical
Panel Surface	Anti-glare 7H tempered glass
Operation Rating	16/7

Contact Sales

ViewSonic.com

888.881.8781 

email: salesinfo@viewsonic.com 