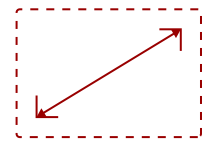


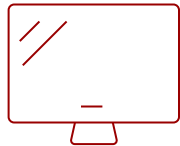
# PG701WU - 3500 LUMENS WUXGA PROJECTOR WITH LOW INPUT LAG AND VERTICAL KEYSTONE

## Key Features

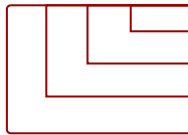
- High brightness 3500 Lumens WUXGA projector with advanced visual features
- 1.1x optical zoom, 40 degree vertical keystone for flexible setup
- A low 16ms input latency provides faster frame-by-frame action for smooth images without delay
- SuperEco Mode allows the lamp to shine bright for up to 20,000 hours
- Supports most media players, PCs, Macs, and mobile devices with inputs such as HDMI, USB



30 - 300 in. / 0.76 - 7.62 m  
**DISPLAY**



**PANEL**



1920 x 1200  
**RESOLUTION**

Flexible connectivity for your favorite devices.



1.1x Optical zoom lens



- x2 HDMI 1.4 (HDCP 1.4)
- x2 VGA (In/Out)
- x1 USB 2.0 Type A
- x1 Ethernet Lan (RJ45)
- x1 S-Video In
- x2 3.5mm Audio In/Out
- x1 RS232 In
- x1 Kensington Lock Slot

## Product Description

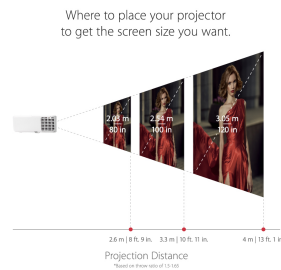
The ViewSonic® PG701WU WUXGA projector features 3,500 lumens, 1920x1200 native resolution, an intuitive, user-friendly design, and a sleek white chassis. Exclusive SuperColor™ technology offers a wide color gamut for beautiful image production in nearly any environment. With vertical keystone correction, and extensive connectivity options, the PG701WU provides flexible and quick set-up. What's more, an energy-saving SuperEco™ feature reduces power consumption and extends the lamp life by up to 20,000 hours. The PG701WU is the ideal projector for both high-definition presentations and vibrant multimedia entertainment.

## Specifications

|  |  |
|--|--|
| <b>UPC</b>   | 766907001747   |
| <b>Light Source</b>                                | DLP Lamp   |
| <b>Display Resolution</b>                          | WUXGA (1920x1200)  |
| <b>Display Resolution</b>                          | 1920 x 1200  |
| <b>Brightness (Lumens)</b>                         | 3,500 ANSI   |
| <b>Screen Size</b>                                 | 30 - 300 in. / 0.76 - 7.62 m   |
| <b>Throw Distance</b>                              | 3.3 - 36.0 ft / 1.0 m - 11.0 m   |
| <b>Throw Ratio</b>                                 | 1.5-1.65   |
| <b>Keystone</b>                                    | Vertical (+/- 40°)   |
| <b>Lens</b>  | 1.1x optical zoom  |
| <b>Light Source (watt)</b>                         | 203  |
| <b>Light Source Life, Normal (hours)</b>           | 5000   |
| <b>Light Source Life, Dynamic Eco-Mode (hours)</b> | 20000  |
| <b>Color Depth</b>                                 | 1.07B Color (R/G/B 10bit)  |
| <b>Aspect Ratio</b>                                | 16:10  |
| <b>Input Lag</b>                                   | 37ms   |
| <b>Frequency Horizontal</b>                        | 15K~102KHz   |
| <b>Frequency Vertical</b>                          | 23~120Hz   |
| <b>PC Resolution (max)</b>                         | 1920 x 1200  |
| <b>PC Resolution (min)</b>                         | 640 x 480  |
| <b>Mac® Resolution (max)</b>                       | 1920 x 1200  |
| <b>Mac® Resolution (min)</b>                       | 640 x 480  |
| <b>USB 2.0 Type A</b>                              | 1  |
| <b>3.5mm Audio Out</b>                             | 1  |
| <b>3.5mm Audio In</b>                              | 1  |
| <b>Control (RS232)</b>                             | 1  |
| <b>HDMI 1.4 In</b>                                 | 1  |
| <b>HDMI 1.4 (with HDCP 1.4)</b>                    | 1  |
| <b>Internal Speakers</b>                           | 2W (x1)  |
| <b>Consumption (typical)</b>                       | 300W   |
| <b>Stand-by</b>                                    | <0.5W  |
| <b>Physical Controls</b>                           | Power, keystone/arrow keys, left/blank, menu/exit, right/panel key lock, mode/enter, auto, source                  |
| <b>On Screen Display</b>                           | Display, Image, Power Management, Basic, Advanced, System, Information (See user guide for full OSD functionality) |
| <b>Temperature</b>                                 | 32-104° F (0 - 40° C)  |
| <b>Humidity (non-condensing)</b>                   | 0-90%  |

|                             |  |
|-----------------------------|--|
| <b>Kensington Lock Slot</b> | 1  |
| <b>Net (lbs)</b>            | 5.7  |
| <b>Gross (lbs)</b>          | 8.2  |
| <b>Net (kg)</b>             | 2.6  |
| <b>Gross (kg)</b>           | 3.7  |
| <b>Packaging (in.)</b>      | 16.3 x 6.6 x 11.7  |
| <b>Physical (in.)</b>       | 12.3 x 8.7 x 4.3   |
| <b>Packaging (mm)</b>       | 415.0 x 168.0 x 297.0  |
| <b>Physical (mm)</b>        | 312.0 x 222.0 x 108.0  |
| <b>Regulations</b>          | FCC, cTUVus, ROHS  |
| <b>Package Contents</b>     | PG701WU projector, Power Cable, VGA Cable, Remote Control, Quick Start Guide   |
| <b>Warranty</b>             | Three-year limited warranty on parts and labor, 1-year limited warranty on lamp, 1st year free Express Exchange® service. (One year Express Exchange Service requires product registration). |
| <b>Recycle/Disposal</b>     | Please dispose of in accordance with local, state or federal laws.   |

UPC: 766907001747



**Contact Sales**  
[ViewSonic.com](http://ViewSonic.com)  
 888.881.8781  
 email: [salesinfo@viewsonic.com](mailto:salesinfo@viewsonic.com)