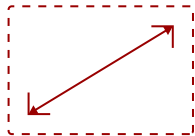


## IFP8650-E1 - 86" 4K TOUCH ENABLED VIEWBOARD SMART DISPLAY WITH WIFI ADAPTER AND FIXED WALL MOUNT

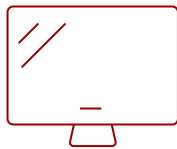
### Key Features

---

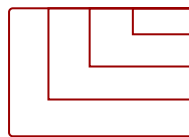
- **ULTRA HD RESOLUTION:** 86 Inch 4K Ultra HD (3840x2160p) interactive display
- **ADVANCED TOUCH:** 40-point multi-touch lets users write on the display with their fingers and stylus pens
- **INTEGRATED SOFTWARE:** The myViewBoard suite includes Whiteboard, ViewBoard Cast, and more for better engagement
- **BETTER SOUND:** Built-in 40W stereo soundbar delivers optimal sound
- **FLEXIBLE CONNECTIVITY:** Powerful quad-core processor and versatile connectivity options with 65W PD USB-C (HDMI, RJ45, and USB ports)
- **EVERYTHING TO GET STARTED:** This bundle includes the interactive display, wireless AC adapter and wall mount
- **REMOTE MANAGEMENT:** Schedule updates and monitor device status with the built-in myViewBoard® Manager software
- **PEACE OF MIND:** Industry-leading 3-year standard warranty with optional extensions and robust support services



86  
DISPLAY



PANEL



RESOLUTION



### Product Description

---

Ideal for education environments, this all-in-one ViewBoard Bundle includes a 86" ViewBoard IFP8650 4K interactive flat panel, a wireless AC adapter, and a WMK-047-2 wall mount.

### Specifications

---

More Information

UPC

766907002584

<b>OS</b>	ViewBoard OS (embedded Android 8)
<b>GPU</b>	ARM Mali450 MP4
<b>CPU</b>	ARM Dual Core Cortex A53
<b>CPU Processor Speed</b>	1.2GHz
<b>Memory</b>	2GB
<b>Storage</b>	16GB
<b>Built-in Software</b>	myViewBoard, Chromium browser, Zoom, ViewBoard Cast
<b>Internal Speakers</b>	12W (x2)
<b>Subwoofer</b>	16W (x1)
<b>HDMI 2.0 In</b>	3
<b>HDMI Out</b>	1
<b>3.5mm Audio Out</b>	1
<b>SPDIF Audio Out</b>	1
<b>USB 3.0</b>	4
<b>USB 2.0</b>	2
<b>USB Type C</b>	1
<b>Slot-in PC Slot</b>	1
<b>USB B Touch Port</b>	2
<b>RS232</b>	1
<b>Ethernet LAN (RJ45)</b>	2
<b>WIFI Module Slot</b>	1
<b>Intel® OPS Slot In (80-pin)</b>	1
<b>Voltage</b>	100-240 VAC
<b>Consumption (typical)</b>	175W
<b>Stand-by</b>	<0.5W
<b>On Screen Display</b>	Input, Volume, Backlight, Audio, Screen, Display, Adjust
<b>Remote Control</b>	Volume, Channel, Source, Mute, Back, Input, Menu
<b>Temperature</b>	32-104° F (0 - 40° C)
<b>Humidity (non-condensing)</b>	10-90%
<b>Touch Technology</b>	Infrared
<b>Touch Points</b>	Windows: 20, Android: 20
<b>Tip Detection</b>	Dual tips, 3mm and 8mm
<b>Net (lbs)</b>	186.1
<b>Gross (lbs)</b>	247.1
<b>Net (kg)</b>	84.4
<b>Gross (kg)</b>	112.1

<b>Packaging (in.)</b>	75.3 x 48.2 x 13.6
<b>Physical (in.)</b>	69.4 x 41.0 x 5.7
<b>Packaging (mm)</b>	2211.0 x 1380.0 x 645.0
<b>Physical (mm)</b>	1988.0 x 1186.0 x 146.0
<b>VESA Compatible</b>	800 x 600 mm
<b>Warranty</b>	3-year limited warranty on parts, labor and backlight, onsite warranty
<b>Recycle/Disposal</b>	Please dispose of in accordance with local, state or federal laws.
<b>Package Contents</b>	IFP8650 Display, wireless AC adapter, WMK-047-2, stylus pen x 2, power cable, remote control with batteries, ViewSonic Wizard CD (User Guide), Quick Start Guide, USB cable, camera bracket, HDMI cable, power cords
<b>Regulations</b>	cTUVus, FCC, ENERGY STAR 7.0, Mexico Energy, CE, CB, RoHS, ErP, WEEE
<b>Ethernet LAN</b>	(10/100/1000M) (Android 10/100, PC 10/100/1000)
<b>Display Type</b>	LCD
<b>Screen Size</b>	86
<b>Viewable Area (in.)</b>	86
<b>Light Source</b>	LED
<b>Display Resolution</b>	3840 x 2160
<b>Aspect Ratio</b>	16:9
<b>Static Contrast Ratio</b>	1,200:1
<b>Brightness</b>	350 cd/m2
<b>Response Time (Typical GTG)</b>	8ms
<b>Viewing Angles</b>	178° horizontal, 178° vertical
<b>Panel Surface</b>	Anti-glare 7H tempered glass

UPC: 766907002584



**Contact Sales**  
[ViewSonic.com](http://ViewSonic.com)  
 888.881.8781  
 email:  
[salesinfo@viewsonic.com](mailto:salesinfo@viewsonic.com)