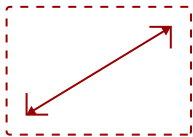


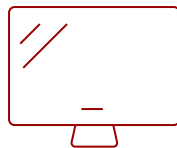
LS625W - 3200 LUMENS WXGA SHORT THROW LASER PROJECTOR WITH HV KEYSTONE

Key Features

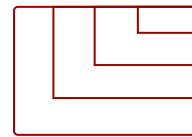
- Bright Images in any Environment
 - Large Images in Small Spaces
 - Long-lasting Laser Phosphor Light Source
 - Horizontal and Vertical Keystone Correction
 - Compatible with Interactive Whiteboard Module
-



70-100 in. / 1.8 - 2.5 m
DISPLAY



PANEL



1920 x 1200
RESOLUTION



Product Description

Featuring 1280x800 WXGA resolution and 3,200 lumens of brightness, the ViewSonic® LS625W short throw laser projector is an ideal projection solution for education environments. Designed with a laser phosphor light source lasting up to 20,000 hours*, and a sealed optical engine and waveform air filter that protect against dust and moisture, this projector delivers long-term, virtually maintenance-free usage for any classroom. With its 0.52 short throw ratio and horizontal/vertical keystoneing, the LS625W makes installation a hassle-free experience. What's more, the short throw ratio allows you to place the projector just a few feet from a wall or screen to give you a huge image for less cost than a comparably sized display. Crestron and AMX certification delivers network management capabilities, while exclusive SuperColor™ technology offers a wider color range for true-to-life images in any classroom.

Specifications

	More Information
UPC	766907980011
Light Source	DLP Laser
Display Resolution	WXGA (1280x800)
Display Resolution	1280 x 800
Brightness (Lumens)	3,200 ANSI
Screen Size	70-100 in. / 1.8 - 2.5 m
Throw Distance	2.6 - 3.7 ft / 0.8 - 1.1 m
Throw Ratio	0.52
Keystone	Vertical (+/- 40°) / Horizontal (+/- 40°)

Lens	Fixed Zoom
Light Source Life, Normal (hours)	20000
Light Source Life, Dynamic Eco-Mode (hours)	20000
Color Depth	1.07B Color (R/G/B 10bit)
Dynamic Contrast Ratio	100,000:1
Aspect Ratio	16:10
Input Lag	37ms
Frequency Horizontal	15K~102KHz
Frequency Vertical	23~120Hz
PC Resolution (max)	1920 x 1200
PC Resolution (min)	640 x 480
Mac® Resolution (max)	1920 x 1200
Mac® Resolution (min)	640 x 480
USB 2.0 Type A	1
Ethernet LAN (RJ45)	1
3.5mm 12V Trigger	1
3.5mm Audio Out	1
3.5mm Audio In	1
Control (RS232)	1
HDMI 1.4 (with HDCP 1.4)	2
VGA In	2
VGA Out	1
Composite RCA Video In	1
S-Video In	1
Mini USB	1
Internal Speakers	10W (x2)
Voltage	100-240V +/- 10%, 50/60Hz AC
Consumption (typical)	305W
Stand-by	<0.5W
Physical Controls	Power, keystone/arrow keys, left/blank, menu/exit, right/panel key lock, mode/enter, auto, source
On Screen Display	Display, Image, Power Management, Basic, Advanced, System, Information (See user guide for full OSD functionality)
Temperature	32-104° F (0 - 40° C)
Humidity (non-condensing)	0-90%
Net (lbs)	13.7
Gross (lbs)	15.4

Net (kg)	6.2
Gross (kg)	7.0
Packaging (in.)	19.1 x 9.4 x 15.4
Physical (in.)	15.1 x 5.8 x 11.5
Packaging (mm)	485.0 x 238.0 x 390.0
Physical (mm)	383.0 x 147.0 x 291.0
AV Control	AMX Certified, Crestron Certified, PJ Link Certified
Regulations	FCC, cTUVus, ROHS
Package Contents	LS625W projector, power cable, VGA cable, remote control, Quick Start Guide
Warranty	Three-year limited warranty on parts and labor, 1st year free Express Exchange® service. (One year Express Exchange Service requires product registration).
Recycle/Disposal	Please dispose of in accordance with local, state or federal laws.

UPC: 766907980011



Contact Sales

ViewSonic.com

888.881.8781 ☎

email: salesinfo@viewsonic.com ✉