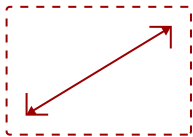


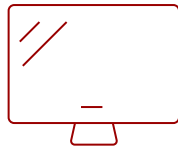
CDM5500T

Key Features

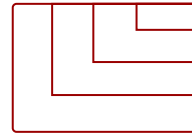
- 10-point Multi-touch
 - Built-in Quad Core Media Player with 16GB Storage
 - Embedded LAN, Wi-Fi, and Browser
 - Internal Scheduler
 - Content Management Software
-



55
DISPLAY



PANEL



RESOLUTION



Product Description

Content deployment, interactivity, and messaging couldn't be easier than with the ViewSonic® CDM5500T. Featuring a 10-point touchscreen and internal media player, this commercial display gives you everything you need for easy interactive digital signage - right out of the box. Loaded with a powerful, high-performance processor and 16GB of storage (upgradeable to 32GB), the built-in media player ensures hours upon hours of smooth, high-definition multimedia content delivery. The CDM5500T also features built-in LAN / WiFi for easy connection to the internet for content delivery. Additional commercial features include an internal scheduler, tiling for video wall applications, and commercial construction for reliable messaging 24 hours a day, 7 days a week.

Specifications

More Information

UPC	766907898316
OS	4.4.4
Media Player Type	Yes
CPU	Quad core A9 CPU - RK3188
Memory	2GB
Storage	16GB
Built-in Software	OSD / Remote Control
Internal Speakers	10W (x2)
HDMI 1.4 In	2

DVI-I	1
DVI-I Out	1
DisplayPort	1
DisplayPort Out	1
3.5mm Audio In	1
3.5mm Audio Out	1
Speaker Out	2
USB 2.0	2
RS232 Out	1
Ethernet LAN (RJ45)	1
Intel® OPS Slot In (80-pin)	1
Voltage	100-240 VAC
Consumption (max)	130W
Consumption (typical)	75W
Stand-by	<.5W
On Screen Display	Input, Volume, Backlight, Audio, Screen, Display, Adjust
Remote Control	Volume, Channel, Source, Mute, Back, Input, Menu
Temperature	41-104° F (5 - 40° C)
Humidity (non-condensing)	10-90%
Touch Technology	Infrared
Touch Points	10-Point Touch
Net (lbs)	77.3
Net Without Stand (lbs)	68.3
Gross (lbs)	87.3
Net (kg)	35.1
Net Without Stand (kg)	31
Gross (kg)	39.6
Packaging (in.)	54.0 x 37.4 x 8.7
Physical (in.)	50 x 29.2 x 3.6
Packaging (mm)	1448 x 952 x 223
Physical (mm)	1271 x 809 x 400
VESA Compatible	400 x 400 mm
Screw Size	M6
Screw Length (mm)	10
Recycle/Disposal	Please dispose of in accordance with local, state or federal laws.


Package Contents	CDM5500T, Remote control, User Manual, Quick Start Guide, power cables, RS232 cable, IR sensor cable, RS232 daisy chain cable
Regulations	UL/cUL, FCC, Energy Star 7.0, UL-MX-CoC, Mexico Energy
Ethernet LAN	10/100 BASE-T
Wifi	802.11 b/g/n
Screen Size	55
Viewable Area (in.)	54.6
Orientation	Landscape / Portrait
Light Source	ELED
Display Resolution	1920 x 1080
Aspect Ratio	16:9
Static Contrast Ratio	1,100:1
Backlight Life (Hours)	50,000
Brightness	450 cd/m2
Response Time (Typical GTG)	12ms
Viewing Angles	178° horizontal, 178° vertical
Panel Surface	3H Anti-glare, hard-coating
Operation Rating	24/7

UPC: 766907898316



Contact Sales

ViewSonic.com

888.881.8781 

email: salesinfo@viewsonic.com 