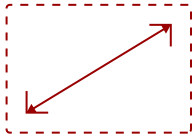


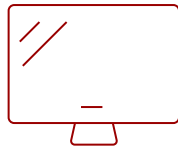
CDM5500R

Key Features

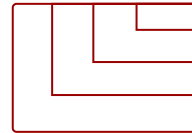
- Built-in Quad Core Media Player with 16GB Storage
 - Embedded LAN and Wi-Fi
 - Internet Browser
 - Internal Scheduler
 - Content Management Software
-



55
DISPLAY



PANEL



RESOLUTION



Product Description

Physical deployment, content creation, and message delivery couldn't be easier than with the ViewSonic® CDM5500R. Featuring an internal media player this commercial display gives you everything you need for easy digital signage - right out of the box. Loaded with a powerful, high-performance processor and 16GB of storage (upgradeable to 32GB), the built-in media player ensures hours upon hours of smooth, high-definition multimedia content delivery. The CDM5500R also features built-in LAN / WiFi for easy connection to the internet for content delivery. Additional commercial features include an internal scheduler, tiling for video wall application, and commercial construction for reliable messaging 24 hours a day, 7 days a week.

Specifications

More Information

| | |
|--------------------------|---------------------------|
| UPC | 766907844016 |
| OS | 4.4.4 |
| Media Player Type | Yes |
| CPU | Quad core A9 CPU - RK3188 |
| Memory | 2GB |
| Storage | 16GB |
| Built-in Software | OSD / Remote Control |
| Internal Speakers | 10W (x2) |
| HDMI 1.4 In | 2 |

| | |
|------------------------------------|---|
| DVI-I | 1 |
| DVI-I Out | 1 |
| DisplayPort | 1 |
| DisplayPort Out | 1 |
| RCA Audio In | 1 |
| RCA Audio Out | 1 |
| Speaker Out | 2 |
| USB 2.0 | 2 |
| RS232 Out | 1 |
| Ethernet LAN (RJ45) | 1 |
| SD Card Reader | 1 |
| Intel® OPS Slot In (80-pin) | 1 |
| Voltage | 100-240 VAC |
| Consumption (max) | 130W |
| Consumption (typical) | 75W |
| Stand-by | <.5W |
| On Screen Display | POWER, MUTE, INPUT, VOL -/+, UP, DOWN, MENU |
| Remote Control | Brightness, Contrast, Sharpness, Black Level, Tint, Color, Noise Reduction, Gamma Selection, Color Temperature, Color Control, Picture Mode, Overscan, Flicker Free, Blue Filter, Picture Reset, Brightness, Contrast, Sharpness, Black Level, Tint, Color, Noi |
| Temperature | 41-104° F (5 - 40° C) |
| Humidity (non-condensing) | 10-90% |
| Net (lbs) | 48.7 |
| Net Without Stand (lbs) | 39.6 |
| Gross (lbs) | 53.5 |
| Net (kg) | 22 |
| Net Without Stand (kg) | 18 |
| Gross (kg) | 24.3 |
| Packaging (in.) | 54.0 x 37.4 x 8.7 |
| Physical (in.) | 48.5 x 27.9 x 1.8 |
| Packaging (mm) | 1448 x 952 x 223 |
| Physical (mm) | 1233 x 710 x 45.5 |
| VESA Compatible | 400 x 400 mm |
| Screw Size | M6 |
| Screw Length (mm) | 10 |
| Recycle/Disposal | Please dispose of in accordance with local, state or federal laws. |

| | |
|------------------------------------|---|
| Package Contents | CDM5500R, Remote control, User Manual, Quick Start Guide, power cables, RS232 cable, IR sensor cable, RS232 daisy chain cable |
| Regulations | UL/cUL, FCC, Energy Star 7.0, UL-MX-CoC, Mexico Energy |
| Ethernet LAN | 10/100 BASE-T |
| Wifi | 802.11 b/g/n |
| Screen Size | 55 |
| Viewable Area (in.) | 54.6 |
| Orientation | Landscape / Portrait |
| Light Source | ELED |
| Display Resolution | 1920 x 1080 |
| Aspect Ratio | 16:9 |
| Static Contrast Ratio | 1,100:1 |
| Backlight Life (Hours) | 50,000 |
| Brightness | 450 cd/m2 |
| Response Time (Typical GTG) | 12ms |
| Bezel Width (in.) | Top 0.38 in / Left 0.38 in / Bottom 0.62 in / Right 0.38 in |
| Bezel Width (mm) | Top 9.6 mm / Left 9.6 mm / Bottom 15.7 mm / Right 9.6 mm |
| Viewing Angles | 178° horizontal, 178° vertical |
| Panel Surface | 3H Anti-glare, hard-coating |
| Operation Rating | 24/7 |

UPC: 766907844016



Contact Sales

ViewSonic.com

888.881.8781

email: salesinfo@viewsonic.com