

## VA2252SM - 22" 1080P LED MONITOR DISPLAYPORT, DVI AND VGA INPUTS

### Key Features

---

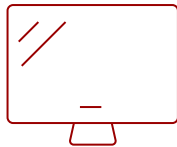
- Full HD 1080p resolution
- Stunning color performance & wide-angle viewing
- Flexible connectivity options
- Superior color rendering & intuitive settings
- Enhanced viewing comfort



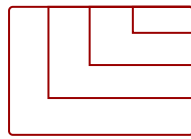
What's in the box.



22  
DISPLAY



MVA  
PANEL



1920 x 1080  
RESOLUTION



VA2252SM Monitor



Power Cable\*



VGA Cable



QuickStart Guide

\*Power Cable varies by region

### Product Description

---

The ViewSonic VA2252Sm is a 22" (21.5" viewable) Full HD 1920x1080 LED monitor designed with business professionals in mind. With ViewSonic SuperClear MVA panel technology and 3000:1 static contrast ratio, this monitor delivers an incredible front-of-screen work experience at nearly any viewing angle. Versatile input options include future-proof DisplayPort, as well as DVI and VGA inputs, for productivity-boosting connectivity to PC systems, laptops, and other work devices. A matte-finish, uniform bezel design and a VESA-compatible mount adapt easily to multi-monitor or wall-mount set ups, while integrated speakers deliver enhanced multimedia sound. ViewSonic's exclusive ViewMode feature provides intuitive presets that deliver optimized screen performance in different applications. In addition, Flicker-Free technology and a Blue Light Filter help to eliminate eye strain from extended viewing periods for improved productivity. Lastly, a 3-year limited warranty, along with one of the industry's best pixel performance policies, provides great value for the stylish, high-performance VA2252Sm monitor.

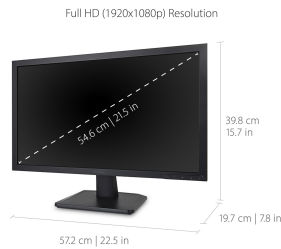
# Specifications

---

|                                    | More Information  |
|------------------------------------|---|
| <b>UPC</b>                         | 766907810325  |
| <b>Screen Size</b>                 | 22  |
| <b>Viewable Area (in.)</b>         | 21.5  |
| <b>Panel Type</b>                  | MVA   |
| <b>Display Resolution</b>          | 1920 x 1080   |
| <b>Static Contrast Ratio</b>       | 3,000:1   |
| <b>Light Source</b>                | LED   |
| <b>Brightness</b>                  | 250 cd/m2   |
| <b>Colors</b>                      | 16.7M   |
| <b>Response Time (Typical GTG)</b> | 6.5ms   |
| <b>Viewing Angles</b>              | 178° horizontal, 178° vertical  |
| <b>Backlight Life (Hours)</b>      | 40,000  |
| <b>Panel Surface</b>               | 3H Anti-glare, hard-coating   |
| <b>PC Resolution (max)</b>         | 1920 x 1080   |
| <b>Mac® Resolution (max)</b>       | 1920 x 1080   |
| <b>3.5mm Audio In</b>              | 1   |
| <b>3.5mm Audio Out</b>             | 1   |
| <b>VGA</b>                         | 1   |
| <b>DVI-D</b>                       | 1   |
| <b>DisplayPort</b>                 | 1   |
| <b>Eco Mode (Conserve)</b>         | 13W   |
| <b>Eco Mode (optimized)</b>        | 17W   |
| <b>Consumption (typical)</b>       | 21W   |
| <b>Consumption (max)</b>           | 28W   |
| <b>Voltage</b>                     | AC 100-240V (universal), 50-60Hz  |
| <b>Cable Organization</b>          | No  |
| <b>Kensington Lock Slot</b>        | 1   |
| <b>Physical Controls</b>           | 1, 2, Down, Up, Power   |
| <b>On Screen Display</b>           | Auto Image Adjust, Contrast/Brightness, Input Select, Audio Adjust, Color Adjust, Information, Manual ImageAdjust, Setup Menu, Memory Recall(See user guide for complete OSD functionality) |
| <b>Humidity (non-condensing)</b>   | 20-90%  |
| <b>VESA Compatible</b>             | 100 x 100 mm  |
| <b>Frequency Horizontal</b>        | 24~82kHz  |

|                                     |   |
|-------------------------------------|---|
| <b>Frequency Vertical</b>           | 50~75Hz   |
| <b>Analog Sync</b>                  | Separate Sync   |
| <b>Net (lbs)</b>                    | 7.6   |
| <b>Net Without Stand (lbs)</b>      | 6.8   |
| <b>Gross (lbs)</b>                  | 9.8   |
| <b>Net (kg)</b>                     | 3.4   |
| <b>Net Without Stand (kg)</b>       | 3.1   |
| <b>Gross (kg)</b>                   | 4.4   |
| <b>Packaging (in.)</b>              | 22.5 x 15.2 x 4.9   |
| <b>Physical (in.)</b>               | 22.5 x 15.7 x 7.8   |
| <b>Physical Without Stand (in.)</b> | 22.5 x 12.1 x 2.0   |
| <b>Packaging (mm)</b>               | 571 x 386 x 124   |
| <b>Physical (mm)</b>                | 571.7 x 398.0 x 196.8   |
| <b>Physical Without Stand (mm)</b>  | 517.7 x 309.5 x 49.5  |
| <b>Regulations</b>                  | cULus, Energy Star 7.0, FCC-B, ICES003, UL-MX-CoC, Mexico Energy, CE, CB, RoHS, Reach, WEEE, TCO6.0, ErP, UkrSEPRO, EAC |
| <b>Package Contents</b>             | VA2252Sm monitor, Power cable, VGA cable, Quick Start Guide   |
| <b>Recycle/Disposal</b>             | Please dispose of in accordance with local, state or federal laws.  |

UPC: 766907810325



**Contact Sales**  
[ViewSonic.com](http://ViewSonic.com)  
 888.881.8781  
 email:  
[salesinfo@viewsonic.com](mailto:salesinfo@viewsonic.com)