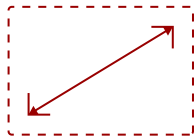


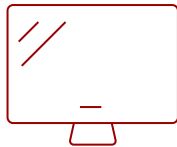
VG2240 - 22" 1080P ERGONOMIC 40-DEGREE TILT MONITOR WITH HDMI, DP, AND VGA

Key Features

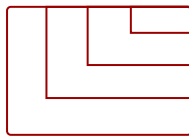
- 22 Inch Full HD (1920x1080p) LED monitor with 60Hz refresh rate
- Advanced ergonomics (40-degree tilt, swivel, rotate and height) for all-day comfort
- Flicker-Free technology and Blue Light Filter for reduced eye fatigue
- The VG2240 supports laptops, PCs, Macs and more with HDMI, USB, DisplayPort, VGA inputs



22
DISPLAY



MVA
PANEL



1920x1080
RESOLUTION



- 2x 2-watt integrated speakers
- 100x100mm VESA compatible mount
- x1 HDMI 1.4
- x1 DisplayPort In
- x4 USB Type-A
- x1 USB Type-B
- x1 VGA
- x2 Audio (In/Out)

FLEXIBLE CONNECTIVITY

Product Description

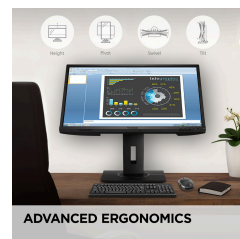
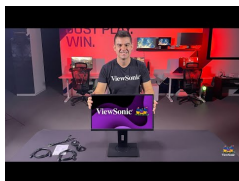
The ViewSonic® VG2240 is a 22" (21.5" viewable) Full HD monitor that includes a full-range of connectivity and ergonomic functionality ideal for your workstation at the office and at home. With SuperClear® MVA panel technology for wide-angle viewing, and a true 8-bit panel with the ability to reproduce 16.7M colors, this monitor delivers incredibly sharp images. Integrated with HDMI, DisplayPort, VGA and 4 USB ports, the VG2240 allows flexible connection to PC systems, laptops and other peripheral devices and accessories. ViewSonic's exclusive vDisplayManager software provides intuitive presets that deliver optimized screen performance in different applications. In addition, Flicker-Free and Blue Light Filter technology help to eliminate eye strain from extended viewing periods.

Specifications

UPC	766907017793
Screen Size	22
Viewable Area (in.)	21.5
Panel Type	MVA
Display Resolution	1920 x 1080
Display Resolution	Full HD (1920x1080)
Static Contrast Ratio	3,000:1
Dynamic Contrast Ratio	80M:1
Light Source	LED
Brightness	250 cd/m2
Colors	16.7M
Color Space Support	8 bit true
Aspect Ratio	16:9
Response Time (Typical GTG)	5ms
Viewing Angles	178º horizontal, 178º vertical
Backlight Life (Hours)	30,000
Panel Surface	Anti-Glare type, Hard-coating (3H), Haze 25%
Flicker-Free	Yes
Blue Light Filter	Yes
PC Resolution (max)	1920x1080
Mac® Resolution (max)	1920x1080
USB Type A	4
USB Type B	1
3.5mm Audio In	1
3.5mm Audio Out	1
VGA	1
HDMI 1.4 In	1
DisplayPort	1
Internal Speakers	2W (x2)
Eco Mode (Conserve)	16.8
Eco Mode (optimized)	18.8
Consumption (typical)	21.6
Consumption (max)	57.8
Voltage	AC 100-240V (universal), 50-60Hz
Stand-by	0.5
Power Supply	Internal

Cable Organization	No
Headphone Hook	No
Physical Controls	Key 1 (eye), Key 2, Key 3, Key 4, Key 5, Key 6 (power)
On Screen Display	Input Select, Audio Adjust, ViewMode, Color Adjust, Manual Image Adjust, Setup Menu
Temperature	32-104° F (0 - 40° C)
Humidity (non-condensing)	20-90%
VESA Compatible	100 x 100 mm
Frequency Horizontal	VGA: 24 ~ 82 KHz HDMI: 24 ~ 82 KHz DP: 24 ~ 82 KHz
Frequency Vertical	VGA: 50 ~ 75 Hz HDMI: 50 ~ 75 Hz DP: 50 ~ 75 Hz
Height Adjust	130 mm / 5.1 in
Swivel	60°
Pivot (Right/Left)	90° / 90°
Tilt (Forward/Back)	5° / 40°
Net (lbs)	11.5
Net Without Stand (lbs)	6.2
Gross (lbs)	16.8
Net (kg)	5.2
Net Without Stand (kg)	2.8
Gross (kg)	7.6
Packaging (in.)	21.9 " (W) x 14.9 " (H) x 8.3 " (D)
Physical (in.)	19.7 " (W) x 15.23~19.56 " (H) x 8.1 " (D)
Physical Without Stand (in.)	19.7 " (W) x 11.6 " (H) x 2 " (D)
Packaging (mm)	556 mm (W) x 379 mm (H) x 210 mm (D)
Physical (mm)	501 mm (W) x 386.85~496.96 mm (H) x 206 mm (D)
Physical Without Stand (mm)	501 mm (W) x 294 mm (H) x 51 mm (D)
Regulations	cTUVus, FCC-B, ICES003, Energy Star 8.0, EPEAT Silver, CEC, NOM, Mexico Energy
Package Contents	LCD Display, Power Cable, HDMI Cable, USB A/B Cable, Audio Cable, Quick Start Guide
Recycle/Disposal	Please dispose of in accordance with local, state or federal laws.
Warranty	Three-year limited warranty on parts, labor and backlight

UPC: 766907017793



Contact Sales
[ViewSonic.com](https://www.viewsonic.com)
 888.881.8781 ☎
 email: salesinfo@viewsonic.com ✉