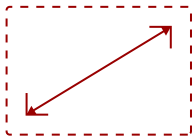


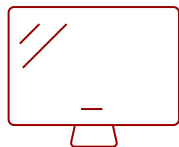
LS600W-S

Key Features

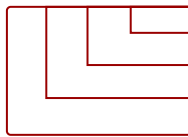
- Advanced LED Light Source
- Bright Images in Any Environment
- Convenient Auto Power On/Off
- 360-degree Orientation
- Comprehensive LAN Control



30 - 300 in. / 0.76 - 7.62 m
DISPLAY



PANEL



1920 x 1080
RESOLUTION



Product Description

Featuring 1280x800 WXGA resolution and 3,500 ANSI lumens of brightness, the ViewSonic® LS600W is a lamp-free LED projector ideal for business and education. No matter the environment, expect stunning images and vivid colors, as this projector boasts 125% Rec. 709 color accuracy. With 2nd generation LED technology, the LS600W eliminates the need to continuously swap out bulbs and dispose of toxic chemicals. In addition, an IP5X sealed optical engine prevents dust and moisture from entering the projector, ensuring impeccable image quality and a long maintenance-free lifespan of up to 30,000 hours.* An automatic on/off feature delivers efficiency and power savings, while comprehensive LAN control ensures easy management across meeting rooms and classrooms. Whether for business or education, the ViewSonic LS600W LED projector provides a picture-perfect presentation every time.

Specifications


UPC	766907010893
Light Source	DLP LED
Display Resolution	WXGA (1280x800)
Display Resolution	1280 x 800
Brightness (Lumens)	3,500 ANSI
Screen Size	30 - 300 in. / 0.76 - 7.62 m
Throw Distance	0.86-10.60m (100"@2.95m)
Throw Ratio	1.37-1.64
Keystone	Vertical (+/- 40°) / Horizontal (+/- 40°)
Lens	1.2x optical zoom
Light Source (watt)	RGBB LED
Light Source Life, Normal (hours)	30000
Color Depth	1.07 Billion Colors
Dynamic Contrast Ratio	3,000,000:1
Aspect Ratio	16:10
Input Lag	37ms
Frequency Horizontal	15K~105KHz
Frequency Vertical	23-120Hz
PC Resolution (max)	1920 x 1080
Mac® Resolution (max)	1920 x 1080
USB 2.0 Type A	1
Ethernet LAN (RJ45)	1
3.5mm Audio Out	1
3.5mm Audio In	1
Control (RS232)	1
HDMI 1.4 (with HDCP 1.4)	2
VGA In	1
Composite RCA Video In	1
RCA Audio In (L/R)	1
Internal Speakers	10W (x1)
Voltage	100-240V+/- 10%, 50/60Hz AC
Consumption (typical)	270W
Stand-by	<0.5W
Physical Controls	Keypad, Power key
On Screen Display	Display, Image, Power Management, Basic, Advanced, System, Information (See user guide for full OSD functionality)

Temperature	32-104º F (0 - 40º C)
Kensington Lock Slot	1
Net (lbs)	11.0
Gross (lbs)	15.4
Net (kg)	5.0
Gross (kg)	7.0
Physical (in.)	15.2 x 4.6 x 10.9
Physical (mm)	386.0 x 116.0 x 276.0
Regulations	cTUVus
Package Contents	LS600W projector, power cable, VGA cable, remote control, Quick Start Guide
Warranty	*Refurbished. 30-day DOA policy for full refund, with a 90-day repair warranty on parts and labor.
Recycle/Disposal	Please dispose of in accordance with local, state or federal laws.
Classification	Refurbished

UPC: 766907010893



Contact Sales
ViewSonic.com

888.881.8781 
email:
salesinfo@viewsonic.com

