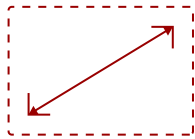




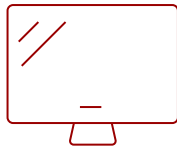
CDE7520-W1 - 75" DISPLAY, 3840 X 2160 RESOLUTION, 450 CD/M2 BRIGHTNESS

Key Features

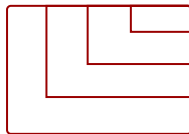
- Ultra HD Resolution
- Powerful Embedded SOC Platform
- All-in-One Solution
- VIEWBOARD® CAST CONTENT SHARING SOFTWARE
- Remote Content Sharing from Anywhere
- myViewBoard Manager



75
DISPLAY



IPS-Type
PANEL



RESOLUTION



Product Description

The ViewSonic® CDE7520-W is a 75" premium 4K large format presentation display. With features including a razor-sharp resolution of 3840 x 2160, 450-nit high brightness, 178-degree ultra-wide viewing angles, 2 x 16W speakers, and wireless screen sharing, the CDE7520-W transforms meeting rooms into a dynamic communications hub. The built-in ViewBoard® screen sharing software*, ViewBoard® Cast (along with the optional ViewSonic® vCastSender app) and myViewBoard Display software, enables both on-site and online users to participate in conferences and simultaneously share content. Equipped with twin dual-core processors, 3GB RAM, and 16GB of internal memory, the CDE7520-W can play multimedia from internal storage or a USB flash drive. And with remote configuration and content management system support, the ViewSonic® CDE7520-W is also suitable for a wide array of diverse signage applications. Bundle includes display and USB Wi-Fi adapter. *Chrome, Android, Windows, Mac OS, and iOS compliant

Specifications

| More Information | |
|-----------------------------|---|
| Display Type | LCD |
| Screen Size | 75 |
| Viewable Area (in.) | 75 |
| Orientation | Landscape |
| Colors | 1.07B |
| Color Space Support | 8 bit+FRC |
| Light Source | DLED |
| Display Resolution | 3840 x 2160 |
| Panel Type | IPS-Type |
| Aspect Ratio | 16:9 |
| Static Contrast Ratio | 1,200:1 |
| Backlight Life (Hours) | 50,000 |
| Brightness | 450 cd/m2 |
| Response Time (Typical GTG) | 8ms |
| Viewing Angles | 178º horizontal, 178º vertical |
| Panel Surface | Hard Coat - Anti-Glare, 3% Haze, 2H with anti-glare treatment |
| OS | Android 8.0 |
| Media Player Type | Media Player |
| GPU | G51MP2 |
| CPU | Dual CPU - Cortex A73 + A5 |
| CPU Processor Speed | Quad-core, 1.4GHz |
| Memory | 3GB DDR4 |
| Storage | 16GB eMMC |
| Internal Speakers | 16W (x2) |
| HDMI 2.0 (with HDCP 2.2) | 2 |
| DVI-D | 1 |
| VGA | 1 |
| DisplayPort | 1 |
| RCA Audio Out | 1 |
| 3.5mm Audio In | 1 |
| SPDIF Audio Out | 1 |
| SPDIF | 1 |
| USB 3.0 | 1 |

| | |
|------------------------------------|---|
| USB 2.0 | 2 |
| OPS PC Slot | 1 |
| RS232 | 1 |
| Ethernet LAN (RJ45) | 1 |
| IR in | 1 |
| IR out | 1 |
| WIFI Module Slot | 1 |
| Intel® OPS Slot In (80-pin) | 1 |
| Voltage | 100-240 VAC +/- 10% Wide Range, 50-60Hz +/-3 Hz |
| Consumption (max) | 300W |
| Consumption (typical) | 240W |
| Stand-by | <0.5W |
| Temperature | 32-104° F (0 - 40° C) |
| Humidity (non-condensing) | 20-80% |
| Net (lbs) | 64.6 |
| Gross (lbs) | 91.9 |
| Net (kg) | 29.3 |
| Gross (kg) | 41.7 |
| Packaging (in.) | 72.0 x 43.2 x 8.7 |
| Physical (in.) | 65.8 x 37.6 x 2.8 |
| Packaging (mm) | 1828.0 x 1098.0 x 220.0 |
| Physical (mm) | 1672.0 x 955.0 x 70.0 |
| VESA Compatible | 400 x 200 mm |
| Screw Size | M8 |
| AV Control | AMX Certified, Crestron Certified (Version 1.0), Extron Certified |
| Recycle/Disposal | Please dispose of in accordance with local, state or federal laws. |
| Package Contents | CDE7520-W, Remote control with batteries, Quick Start Guide, Power cable, HDMI Cable, Wall Mount Screws and RS232 cable |
| Regulations | cULus, FCC, Energy Star, RoHS |



Contact Sales

ViewSonic.com

888.881.8781 ☎

email: salesinfo@viewsonic.com ✉