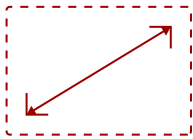


LS600W - 1280 X 800 RESOLUTION, 3,500 ANSI LUMENS, 1.37-1.64 THROW RATIO

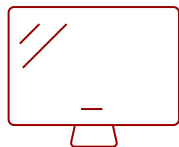
## Key Features

---

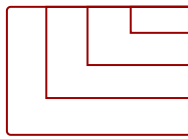
- Bright 3500 Lumens WXGA LED projector with 0.52 short throw and advanced visual features
- Latest LED technology provides an extended lifespan of up to 30,000 hours
- 1.2x optical zoom, 40 degree H/V keystone and 360 degree projection
- This projector can be configured to automatically turn on and off
- Monitor, schedule, and manage the projector remotely with Crestron, AMX, Extron and ViewSonic vController
- Supports most media players, PCs, Macs, and mobile devices with inputs such as Dual HDMI, USB, Ethernet LAN



30 - 300 in. / 0.76 - 7.62 m  
**DISPLAY**



**PANEL**



1920 x 1080  
**RESOLUTION**



## Product Description

---

Featuring 1280x800 WXGA resolution and 3,500 ANSI lumens of brightness, the ViewSonic® LS600W is a lamp-free LED projector ideal for business and education. No matter the environment, expect stunning images and vivid colors, as this projector boasts 125% Rec. 709 color accuracy. With 2nd generation LED technology, the LS600W eliminates the need to continuously swap out bulbs and dispose of toxic chemicals. In addition, an IP5X sealed optical engine prevents dust and moisture from entering the projector, ensuring impeccable image quality and a long maintenance-free lifespan of up to 30,000 hours.\* An automatic on/off feature delivers efficiency and power savings, while comprehensive LAN control ensures easy management across meeting rooms and classrooms. Whether for business or education, the ViewSonic LS600W LED projector provides a picture-perfect presentation every time.

## Specifications

---


<b>UPC</b>	766907007145
<b>Light Source</b>	DLP LED
<b>Display Resolution</b>	WXGA (1280x800)
<b>Display Resolution</b>	1280 x 800
<b>Brightness (Lumens)</b>	3,500 ANSI
<b>Screen Size</b>	30 - 300 in. / 0.76 - 7.62 m
<b>Throw Distance</b>	0.86-10.60m (100"@2.95m)
<b>Throw Ratio</b>	1.37-1.64
<b>Keystone</b>	Vertical (+/- 40°) / Horizontal (+/- 40°)
<b>Lens</b>	1.2x optical zoom
<b>Light Source (watt)</b>	RGBB LED
<b>Light Source Life, Normal (hours)</b>	30000
<b>Color Depth</b>	1.07 Billion Colors
<b>Dynamic Contrast Ratio</b>	3,000,000:1
<b>Aspect Ratio</b>	16:10
<b>Input Lag</b>	37ms
<b>Frequency Horizontal</b>	15K~105KHz
<b>Frequency Vertical</b>	23-120Hz
<b>PC Resolution (max)</b>	1920 x 1080
<b>Mac® Resolution (max)</b>	1920 x 1080
<b>USB 2.0 Type A</b>	1
<b>Ethernet LAN (RJ45)</b>	1
<b>3.5mm Audio Out</b>	1
<b>3.5mm Audio In</b>	1
<b>Control (RS232)</b>	1
<b>HDMI 1.4 (with HDCP 1.4)</b>	2
<b>VGA In</b>	1
<b>Composite RCA Video In</b>	1
<b>RCA Audio In (L/R)</b>	1
<b>Internal Speakers</b>	10W (x1)
<b>Voltage</b>	100-240V+/- 10%, 50/60Hz AC
<b>Consumption (typical)</b>	270W
<b>Stand-by</b>	<0.5W
<b>Physical Controls</b>	Keypad, Power key
<b>On Screen Display</b>	Display, Image, Power Management, Basic, Advanced, System, Information (See user guide for full OSD functionality)

<b>Temperature</b>	32-104º F (0 - 40º C)
<b>Kensington Lock Slot</b>	1
<b>Net (lbs)</b>	11.0
<b>Gross (lbs)</b>	15.4
<b>Net (kg)</b>	5.0
<b>Gross (kg)</b>	7.0
<b>Physical (in.)</b>	15.2 x 4.6 x 10.9
<b>Physical (mm)</b>	386.0 x 116.0 x 276.0
<b>Regulations</b>	cTUVus
<b>Package Contents</b>	LS600W projector, power cable, VGA cable, remote control, Quick Start Guide
<b>Warranty</b>	Three-year limited warranty on parts and labor, 1-year limited warranty on the light source, 1st year free Express Exchange® service. (One year Express Exchange Service requires product registration).
<b>Recycle/Disposal</b>	Please dispose of in accordance with local, state or federal laws.

UPC: 766907007145



**Contact Sales**  
[ViewSonic.com](http://ViewSonic.com)

888.881.8781   
 email: [salesinfo@viewsonic.com](mailto:salesinfo@viewsonic.com)  
