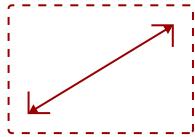


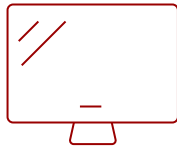
IFP8670 - 86" 4K TOUCH ENABLED VIEWBOARD SMART DISPLAY WITH INTEGRATED CAMERA

Key Features

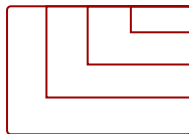
- High-Performance 4K Touchscreen
- Sleek and Slim Design
- Convenient USB Type-C
- Improved Collaboration and Productivity
- Smarter Meeting Rooms
- Optional Slot-in PC



86
DISPLAY



PANEL



RESOLUTION



Product Description

The ViewSonic® ViewBoard® IFP8670 is a Windows Collaboration Display (WCD) designed to help teams connect, collaborate, and create. Certified by Microsoft to provide the best Microsoft Office 365 and Team collaboration experience, this next-generation interactive display delivers exactly what you need to move your ideas forward. Equipped with a premium Skype-certified conference camera and microphone array, Microsoft Azure IoT sensor hub, and more, this ViewBoard Windows Collaboration Display fosters teamwork and boosts productivity. A premium, state-of-the-art design features a bezel-less PCAP (projected capacitive) touchscreen with incredible 4K Ultra HD resolution. This highly accurate interactive screen provides for an incredibly natural and responsive handwriting experience. Using fingers, styluses, or both, multiple users can simultaneously write or draw on the huge 86" ViewBoard panel. What's more, meetings and presentations start fast thanks to convenient one-wire USB-C connectivity.

Specifications

More Information	
UPC	766907001990
Screen Size	86
Viewable Area (in.)	85.6
Light Source	LED
Display Resolution	3840 x 2160
Refresh Rate	60Hz
Aspect Ratio	16:9
Static Contrast Ratio	1,200:1
Dynamic Contrast Ratio	5,000:1
Backlight Life (Hours)	50,000
Brightness	350 cd/m2
Response Time (Typical GTG)	8ms
Viewing Angles	178º horizontal, 178º vertical
Panel Surface	Anti-glare 7H tempered glass
Ethernet LAN	1000M for Android & OPS
OS	Embedded ViewBoard OS
CPU	ARM Quad Core Cortex A73 1.2GHz
Memory	4GB
Storage	32GB
Built-in Software	myViewBoard, Chromium browser, Zoom, ViewBoard Cast
Internal Speakers	10W (x2)
Subwoofer	15W (x1)
HDMI 2.0 In	1
DisplayPort	1
3.5mm Audio Out	1
SPDIF Audio Out	1
USB 3.0	2
USB 3.1 Type C	1
Slot-in PC Slot	1
USB B Touch Port	2
RS232	1
Ethernet LAN (RJ45)	1
WIFI Module Slot	1

Intel® OPS Slot In (80-pin)	1
Sensor Hub Connector	1
Voltage	100-240 VAC
Consumption (typical)	600W
Stand-by	<0.5W
Temperature	32-104° F (0 - 40° C)
Humidity (non-condensing)	10-90%
Touch Technology	Projective Capacitive
Touch Points	Windows: 20, Android: 20
Tip Detection	Finger or Active Pen
Net (lbs)	160.9
Gross (lbs)	209.4
Net (kg)	73.0
Gross (kg)	95.0
Packaging (in.)	83.6 x 53.1 x 11.0
Physical (in.)	77.2 x 45.1 x 3.3
Packaging (mm)	2123.0 x 1348.0 x 280.0
Physical (mm)	1960.9 x 1145.5 x 83.8
VESA Compatible	800 x 600 mm
Warranty	3-year limited warranty on parts, labor and backlight, onsite warranty
Recycle/Disposal	Please dispose of in accordance with local, state or federal laws.
Package Contents	IFP8670 display, IoT sensor, Camera, ActivePen x 2, pen charger, power cable, HDMI cable, USB cable, remote control with batteries, Camera plate, M8 screw x 8, Quick Start Guide
Regulations	cTUVus, FCC, ENERGY STAR, Mexico Energy, CE, CB, RoHS, ErP, WEEE

UPC: 766907001990



Contact Sales

[ViewSonic.com](https://www.viewsonic.com)

888.881.8781

email:

salesinfo@viewsonic.com