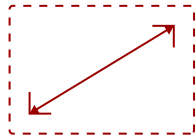


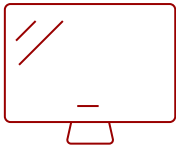
BCP100

Key Features

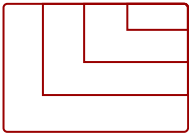
- 100" screen with 16:9 aspect ratio
- Designed for projectors with 0.3 throw ratio or less
- Diffuses unwanted ambient light
- Wide viewing angles
- Easy to assemble and install



100
DISPLAY



PANEL



RESOLUTION

Product Description

The ViewSonic® BrilliantColorPanel™ BCP100 is the ideal screen for ultra-short throw projectors with a 0.30 throw ratio or less. With a 100" screen size and 16:9 aspect ratio, the BCP100 is designed to deliver huge 1080p images. By diffusing high ambient light, this screen enhances contrast and helps to eliminate washed out images, making it perfect for businesses, classrooms, public displays, and home theaters. With a simplistic design, the BCP100 can be quickly and easily assembled and mounted with the included hardware.

Specifications

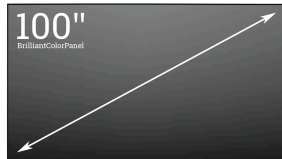
More Information

UPC
Screen Size
Throw Ratio
Aspect Ratio

766907858211
100
<0.3
16:9

Peak Gain	0.6 (+/-) 0.05
Half Gain Angle	80°
Frame Width	0.43" or 11mm
Frame Depth	1.4" or 30mm
Wireless Connectivity	N/A
Packaging (in.)	91.7 x 15.0 x 6.3
Physical (in.)	88.0 x 49.9 x 1.4
Net (lbs)	27.6
Gross (lbs)	50.7

UPC: 766907858211



Contact Sales

ViewSonic.com

888.881.8781

email:

salesinfo@viewsonic.com