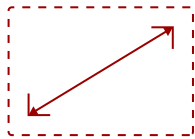


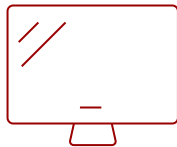
VP2468A_H2 - 24" COLORPRO™ 1080P DUAL PACK HEAD-ONLY IPS DOCKING MONITORS WITH 65W USB-C AND DAISY CHAIN

Key Features

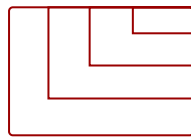
- Sold as a dual pack without monitor stands for easy dual-screen installation
- Single-cable USB-C connectivity for video, audio, data and up to 65W power delivery
- Pantone Validated display with Delta E<2 color accuracy
- Convenient VESA compatibility for easy mounting and installation



24
DISPLAY



IPS
PANEL



1920 x 1080
RESOLUTION



Product Description

If you're looking for professional dual monitors that deliver unmatched color accuracy, as well as easy deployment and mounting capabilities, look no further than the ViewSonic® VP2468a_H2. Sold as a dual pack of monitors without monitor stands, VP2468a_H2 requires less packaging for a reduced environmental footprint, while still providing VESA-compatible mounting for easy installation. USB-C connectivity helps to simplify your workspace by delivering audio, video, data and up to 65W of power delivery over a single universal cable. In addition, DisplayPort out enables seamless daisy chaining dual-monitor setup, while edge-to-edge SuperClear® IPS panels and ultra-thin bezels provide a sleek and frameless viewing experience. To ensure precise, uniform color, these monitors are factory calibrated to deliver an amazing Delta E<2 value. An integrated color uniformity function ensures consistent chromaticity across the screen, while a 14-bit 3D look-up table generates a stunningly smooth palette of 4.39 trillion colors.

Specifications

	More Information
UPC	766907019636
Screen Size	24
Viewable Area (in.)	23.8
Panel Type	IPS
Display Resolution	1920 x 1080
Display Resolution	Full HD (1920x1080)
Static Contrast Ratio	1,000:1
Dynamic Contrast Ratio	20M:1
Light Source	LED
Brightness	250 cd/m2
Colors	16.7M
Color Space Support	8 bit (6 bit + A-FRC)
Aspect Ratio	16:9
Response Time (Typical GTG)	5ms
Viewing Angles	178° horizontal, 178° vertical
Backlight Life (Hours)	30,000
Panel Surface	Anti-Glare type, Hard-coating (3H), Haze 25%
Refresh Rate	60Hz
PC Resolution (max)	1920 x 1080
Mac® Resolution (max)	1920 x 1080
USB Type A	2
USB Type C	1
3.5mm Audio Out	1
Ethernet LAN (RJ45)	1
HDMI 1.4 In	1
DisplayPort	1
DisplayPort Out	1
Eco Mode (Conserve)	8.9w
Eco Mode (optimized)	10.8w
Consumption (typical)	13.9w
Consumption (max)	15.4w
Voltage	AC 100-240V (universal), 50-60Hz
Stand-by	0.5w

Power Supply	Internal
Cable Organization	No
Kensington Lock Slot	1
Physical Controls	Key 1, Key 2, Key 3, Key 4, Key 5, Key 6 (power)
On Screen Display	Input Select, Audio Adjust, ViewMode, Color Adjust, Manual Image Adjust, Setup Menu
Temperature	32-104° F (0 - 40° C)
Humidity (non-condensing)	20-90%
VESA Compatible	100 x 100 mm
Frequency Horizontal	15 ~ 90 KHz
Frequency Vertical	24 ~ 75 Hz
Net Without Stand (lbs)	15.3
Gross (lbs)	24.2
Net Without Stand (kg)	7
Gross (kg)	11
Packaging (in.)	25 " (W) x 16.5 " (H) x 9.9 " (D)
Physical Without Stand (in.)	21.2 " (W) x 12.2 " (H) x 1.9 " (D)
Packaging (mm)	635 mm (W) x 420 mm (H) x 252 mm (D)
Physical Without Stand (mm)	539 mm (W) x 311 mm (H) x 48 mm (D)
Regulations	cTUVus, FCC-B, ICES003, Energy Star 8.0, EPEAT Silver, CEC, MX-CoC, Mexico Energy
Package Contents	LCD Display x2, Power Cable x2, DP to DP Cable x2, USB Type C Cable x2, Quick Start Guide
Recycle/Disposal	Please dispose of in accordance with local, state or federal laws.
Warranty	Three-year limited warranty on parts, labor and backlight

UPC: 766907019636



Contact Sales
ViewSonic.com

888.881.8781
 email:
salesinfo@viewsonic.com