

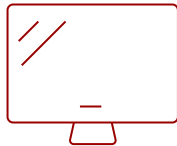
CDE4312-E1 - 43" DISPLAY, 3840 X 2160 RESOLUTION, 230 CD/M2 BRIGHTNESS, 16/7 OPERATION RATING, WALL MOUNT INCLUDED

Key Features

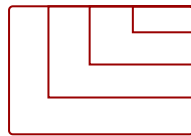
- All-in-one solution includes ViewBoard interactive display and wall mount
- Powerful ViewSonic Embedded Signage Platform (VESP)
- Integrated RJ45 and USB Wi-Fi
- ViewBoard Cast content sharing software
- myViewBoard Display app for remote screen sharing



43
DISPLAY



PANEL



RESOLUTION



Product Description

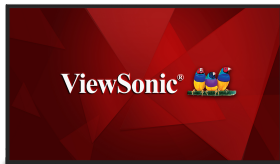
The ViewSonic® CDE4312-E1 is a 43" 4K Ultra HD large format wireless presentation display bundle. With features including a razor-sharp resolution of 3840 x 2160, 230-nit high brightness, 178-degree ultra-wide viewing angles, 2 x 10W speakers, and wireless screen sharing, the CDE4312 transforms meeting rooms into a dynamic communications hub. The built-in ViewBoard® Cast screen sharing software* (along with the optional ViewSonic vCastSender app), and myViewBoard Display software, enables both on-site and online users to participate in conferences and simultaneously share content. Equipped with a 1.5GHz Quad-core embedded SoC processor, 2GB RAM, and 16GB of internal memory, the CDE4312 can play multimedia from internal storage or a USB flash drive 16 hours a day, seven days a week. And with remote configuration and content management system support, the ViewSonic CDE4312 is also suitable for a wide array of diverse signage applications. Bundle includes CDE4312 and wall mount.

*Chrome, Android, Windows, Mac OS, and iOS compliant

Specifications

	More Information
Internal Speakers	10W (x2)
Voltage	100-240 VAC +/- 10% Wide Range, 50-60Hz +/-3 Hz
Consumption (max)	85W
Consumption (typical)	70W
Stand-by	<0.5W
On Screen Display	Picture, Screen, Audio, Time, Advanced Options, About
Temperature	32-104° F (0 - 40° C)
Humidity (non-condensing)	20-80%
Operating System	Android 11.0
CPU	Quad-core, 1.5GHz, MT9632/ARM Cortex-A53
GPU	Dual Core, G52MP2
Memory	2GB DDR4
Storage	16GB (eMMC)
Media Player Type	Yes
Screen Size	43
Viewable Area (in.)	42.5
Colors	1.07B
Light Source	DLED
Display Resolution	3840 x 2160
Aspect Ratio	16:9
Static Contrast Ratio	1,200:1
Viewing Angles	178° horizontal, 178° vertical
Dynamic Contrast Ratio	5,000:1
Backlight Life (Hours)	30,000
Response Time (Typical GTG)	8ms
Brightness	230 cd/m2
Panel Surface	Hard Coat - Anti-Glare, 2% Haze, 3H with anti-glare treatment
Operation Rating	16/7
Gross (kg)	10.4
Net (kg)	6.6
Net (lbs)	14.55
Gross (lbs)	22.93
RCA Audio In	1

SPDIF Audio Out	1
USB 2.0	2
USB-C (15W PD)	1
RS232 In	1
HDMI 2.0 In	2
VGA	1
Wi-Fi/Bluetooth Slot	1
Ethernet LAN (RJ45)	1
3.5mm Audio Out	1
Packaging (mm)	1041 x 630 x 148
Physical (mm)	972.6 x 566.0 x 82.6
Packaging (in.)	40.98 x 24.8 x 5.83
Physical (in.)	38.3 x 22.3 x 3.3
VESA Compatible	200 x 200 mm
Regulations	cTUVus, FCC, Energy Star, EPEAT (Bronze), RoHS
Package Contents	CDE4312, Remote control with batteries, Quick Start Guide, Power cable, HDMI Cable, Wall Mount Screws and RS232 adapter
Recycle/Disposal	Please dispose of in accordance with local, state or federal laws.
Warranty	Three-year limited warranty on parts, labor and backlight
Notices	AMX, Crestron, and Extron Compatible



Contact Sales

ViewSonic.com

888.881.8781

email:

salesinfo@viewsonic.com