

PA700X - 4,500 ANSI LUMENS XGA BUSINESS/EDUCATION PROJECTOR

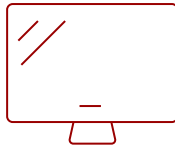
Key Features

- High brightness 4500 Lumens XGA (1024x768p) projector with advanced visual features
- Easy setup with 1.1x optical zoom, and 40-degree vertical keystone
- SuperEco Mode allows the lamp to shine bright for up to 12,000 hours
- Supports most media players, PCs, Macs, and mobile devices with inputs such as dual HDMI, VGA, and USB inputs

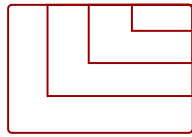


30 - 300 in. / 0.76 - 7.62 m

DISPLAY



PANEL



VGA(640 x 480) to FullHD(1920 x 1080)

RESOLUTION



Product Description

Put your presentations in the best light with the ViewSonic® PA700X XGA projector. This state-of-the-art high brightness projector combines a powerful 4,500 ANSI lumens and XGA resolution for stunning images on a 300" screen. Dual HDMI ports empower you to seamlessly switch between different devices while a USB Type-A port lets you connect wireless dongles directly into the projector. And with easy USB software updates, you can effortlessly keep your projector up-to-date with the latest features. Whether you consider the PA700X a business projector or an education projector, this powerful device is the perfect presentation tool for any environment.

Specifications

More Information

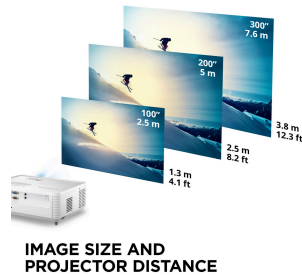
UPC

766907020007

Light Source	DLP Lamp
Display Resolution	XGA (1024x768)
Display Resolution	1024 x 768
Brightness (Lumens)	4,500 ANSI
Screen Size	30 - 300 in. / 0.76 - 7.62 m
Throw Distance	1.18m-13.17m (100"@3.94m)
Throw Ratio	1.94-2.16
Keystone	Vertical (+/- 40°)
Lens	1.1x optical zoom
Light Source (watt)	240
Light Source Life, Normal (hours)	4000
Light Source Life, Dynamic Eco-Mode (hours)	12000
Color Depth	1.07 Billion Colors
Dynamic Contrast Ratio	22,000:1
Aspect Ratio	4:3
Input Lag	37ms
Frequency Horizontal	15K~102KHz
Frequency Vertical	23-120Hz
PC Resolution (max)	VGA(640 x 480) to FullHD(1920 x 1080)
Mac® Resolution (max)	480i, 480p, 576i, 576p, 720p, 1080i, 1080p
USB 2.0 Type A	1
3.5mm Audio Out	1
3.5mm Audio In	1
Control (RS232)	1
HDMI 1.4 (with HDCP 1.4)	2
VGA In	1
VGA Out	1
Internal Speakers	3W (x1)
Voltage	100-240V+/- 10%, 50/60Hz AC
Consumption (typical)	300W
Stand-by	<0.5W
Physical Controls	Keypad, Power key
On Screen Display	Display, Image, Power Management, Basic, Advanced, System, Information (See user guide for full OSD functionality)
Temperature	32-104° F (0 - 40° C)
Kensington Lock Slot	1

Net (lbs)	6
Gross (lbs)	8.4
Net (kg)	2.7
Gross (kg)	3.8
Packaging (in.)	15.7 x 13.3 x 6.6
Physical (in.)	12.2 x 9.2 x 4.5
Packaging (mm)	400 x 337 x 168
Physical (mm)	309 x 234 x 115
Regulations	cTUVus
Package Contents	Projector, power cable, remote control, Quick Start Guide
Warranty	Three-year limited warranty on parts and labor, 1-year limited warranty on the light source, 1st year free Express Exchange® service. (One year Express Exchange Service requires product registration).
Recycle/Disposal	Please dispose of in accordance with local, state or federal laws.

UPC: 766907020007



Contact Sales
ViewSonic.com
 888.881.8781
 email:
salesinfo@viewsonic.com