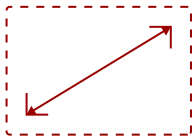


LDM135-151 - 135" DISPLAY, 1920 X 1080 RESOLUTION, 600-NIT BRIGHTNESS

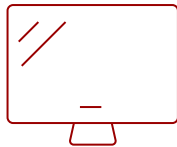
## Key Features

---

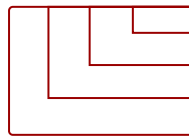
- High-Impact Messaging
- Simple and Easy Setup
- Amazing Audio-Visual Experience
- Device Management Made Easy
- Easy Maintenance



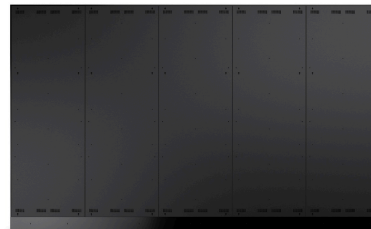
135  
DISPLAY



Fine Pixel Pitch LED  
PANEL



1920x1080  
RESOLUTION



## Product Description

---

The ViewSonic® LDM135-151 is an innovative All-in-One Direct View LED display. With a huge 135" screen size, the LDM135-151 is built to impress as a centerpiece in any conference room, boardroom, or lobby. Along with its immense screen size, this display delivers stunning visuals with Full HD resolution, 1.5mm fine pixel pitch, 600-nit high brightness, 3,840Hz ultra-fast refresh rate, and 120% Rec.709 wide color gamut. What's more, its ultra-slim 35mm thickness and bezel-free design delivers sleek looks whether its hanging on a wall or mounted on an optional aluminum floor stand. Despite its huge screen size, a front-assembly modular design enables easy delivery, installation, and maintenance. And with remote configuration and content management system support, the ViewSonic LDM135-151 is also suitable for a wide array of diverse signage applications.

## Specifications

---

<b>UPC</b>	766907014464
<b>OS</b>	Android 8.0
<b>CPU</b>	Hi3751 V811
<b>Memory</b>	4GB DDR4
<b>Storage</b>	Total 32GB (26GB available storage)
<b>Internal Speakers</b>	5W (x2)
<b>PC Resolution (max)</b>	1920x1080
<b>Mac® Resolution (max)</b>	1920x1080
<b>HDMI 1.4 In</b>	2
<b>HDMI 1.4 (with HDCP 1.4)</b>	2
<b>HDMI 2.0 In</b>	3
<b>HDMI 2.1 In</b>	1
<b>HDMI Out</b>	1
<b>3.5mm Audio Out</b>	1
<b>USB 3.0</b>	1
<b>USB 2.0</b>	2
<b>RS232</b>	1
<b>Ethernet LAN (RJ45)</b>	1
<b>IR in</b>	1
<b>Intel® OPS Slot In (80-pin)</b>	1
<b>Voltage</b>	100-240V+/- 10%, (100-120V/30A, 50/60Hz ; 220-240V/15A)
<b>Consumption (max)</b>	2900W
<b>Consumption (typical)</b>	2030W
<b>Stand-by</b>	<0.5W
<b>On Screen Display</b>	Yes
<b>Remote Control</b>	Yes
<b>Temperature</b>	32-104° F (0 - 40° C)
<b>Humidity (non-condensing)</b>	20-80%
<b>Net (lbs)</b>	298
<b>Gross (lbs)</b>	529
<b>Net (kg)</b>	135
<b>Gross (kg)</b>	240
<b>Packaging (in.)</b>	70.9 x 33.5 x 29.3
<b>Physical (in.)</b>	118.9 x 71.1 x 1.4
<b>Physical with Wall Mount (in.)</b>	118.9 x 71.1 x 2.2
<b>Packaging (mm)</b>	1800 x 850 x745

<b>Physical (mm)</b>	3020.95 x 1805.95 x 35
<b>Physical with Wall Mount (mm)</b>	3020.95 x 1805.95 x 56
<b>Warranty</b>	3-year limited warranty on parts and labor, on-site service
<b>Recycle/Disposal</b>	Please dispose of in accordance with local, state or federal laws.
<b>Package Contents</b>	Power Cord, Remote Control, QSG, USB Cable (A-B), Maintenance Tool (LD-MK-001) x 1, Spare Modules (LED PCB x 2)
<b>Regulations</b>	cTUVus, FCC, RoHS
<b>Wifi</b>	2.4G / 5G n
<b>Display Type</b>	Direct View LED
<b>Screen Size</b>	135
<b>Viewable Area (in.)</b>	135
<b>Orientation</b>	Landscape
<b>LED Pitch Size (mm)</b>	1.56
<b>LED Grayscale</b>	14 bits
<b>Display Resolution</b>	1920 x 1080
<b>Refresh Rate</b>	3,840Hz
<b>Panel Type</b>	Fine Pixel Pitch LED
<b>Aspect Ratio</b>	16:9
<b>Static Contrast Ratio</b>	6,000:1
<b>Backlight Life (Hours)</b>	100,000
<b>Brightness</b>	600-nit
<b>Viewing Angles</b>	160° horizontal, 160° vertical

UPC: 766907014464



### Contact Sales

[ViewSonic.com](http://ViewSonic.com)

888.881.8781

email:

[salesinfo@viewsonic.com](mailto:salesinfo@viewsonic.com)