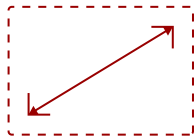


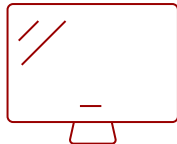
CDE4312 - 43" DISPLAY, 3840 X 2160 RESOLUTION, 230 CD/M2 BRIGHTNESS, 16/7

Key Features

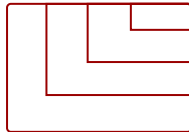
- Ultra HD Resolution
- POWERFUL EMBEDDED SOC PLATFORM
- EMBEDDED LAN AND USB WIRELESS CONNECTIVITY
- VIEWBOARD® CAST CONTENT SHARING SOFTWARE
- Remote Content Sharing from Anywhere
- Remote Monitoring and Display Management Made Simple



43
DISPLAY



PANEL



RESOLUTION



Product Description

The ViewSonic® CDE4312 is a 43" 4K Ultra HD large format wireless presentation display. With features including a razor-sharp resolution of 3840 x 2160, 230-nit high brightness, 178-degree ultra-wide viewing angles, 2 x 10W speakers, and wireless screen sharing, the CDE4312 transforms meeting rooms into a dynamic communications hub. The built-in ViewBoard® Cast screen sharing software* (along with the optional ViewSonic vCastSender app), and myViewBoard Display software, enables both on-site and online users to participate in conferences and simultaneously share content. Equipped with a 1.5GHz Quad-core embedded SoC processor, 2GB RAM, and 16GB of internal memory, the CDE4312 can play multimedia from internal storage or a USB flash drive 16 hours a day, seven days a week. And with remote configuration and content management system support, the ViewSonic CDE4312 is also suitable for a wide array of diverse signage applications.

*Chrome, Android, Windows, Mac OS, and iOS compliant

Specifications

	More Information
UPC	766907017632
Internal Speakers	10W (x2)
Voltage	100-240 VAC +/- 10% Wide Range, 50-60Hz +/-3 Hz
Consumption (max)	85W
Consumption (typical)	70W
Stand-by	<0.5W
On Screen Display	Picture, Screen, Audio, Time, Advanced Options, About
Temperature	32-104° F (0 - 40° C)
Humidity (non-condensing)	20-80%
Operating System	Android 9.0
CPU	Quad-core, 1.5GHz, MT9632/ARM Cortex-A53
GPU	Dual Core, G52MP2
Memory	2GB DDR4
Storage	16GB (eMMC)
Media Player Type	Yes
Screen Size	43
Viewable Area (in.)	42.5
Colors	1.07B
Light Source	DLED
Display Resolution	3840 x 2160
Aspect Ratio	16:9
Static Contrast Ratio	1,200:1
Viewing Angles	178° horizontal, 178° vertical
Dynamic Contrast Ratio	5,000:1
Backlight Life (Hours)	30,000
Response Time (Typical GTG)	8ms
Brightness	230 cd/m2
Panel Surface	Hard Coat - Anti-Glare, 2% Haze, 3H with anti-glare treatment
Operation Rating	16/7
Gross (kg)	10.4
Net (kg)	6.6
Net (lbs)	14.55
Gross (lbs)	22.93

RCA Audio In	1
SPDIF Audio Out	1
USB 2.0	1
USB-C (15W PD)	1
RS232 In	1
HDMI 2.0 In	2
Wi-Fi/Bluetooth Slot	1
Ethernet LAN (RJ45)	1
3.5mm Audio Out	1
Packaging (mm)	1041 x 630 x 148
Bezel Width (mm)	15/15/15/20 mm
Physical (mm)	972.6 x 566.0 x 82.6
Packaging (in.)	40.98 x 24.8 x 5.83
Bezel Width (in.)	0.59/0.59/0.59/0.79 in
Physical (in.)	38.3 x 22.3 x 3.3
VESA Compatible	200 x 200 mm
Regulations	cTUVus, FCC, Energy Star, RoHS
Package Contents	CDE4312, Remote control with batteries, Quick Start Guide, Power cable, HDMI Cable, Wall Mount Screws and RS232 adapter
Recycle/Disposal	Please dispose of in accordance with local, state or federal laws.
Warranty	Three-year limited warranty on parts, labor and backlight

UPC: 766907017632



Contact Sales

ViewSonic.com

888.881.8781

email:

salesinfo@viewsonic.com