

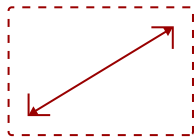
LS550WH - 3000 LED LUMENS WXGA SHORT THROW LED PROJECTOR W/ 125% REC. 709

Key Features

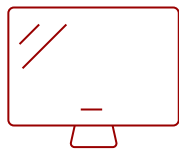
- Bright 3000 LED Lumens WXGA projector with 0.49 short throw lens and advanced visual features
- Latest LED technology provides an extended lifespan of up to 30,000 hours
- 4 corner adjustment, and a 40-degree H/V keystone and 360 degree projection
- This projector can be configured to automatically turn on and off
- Schedule, and manage the projector remotely with Crestron, AMX, Extron, PJ Link, ATEN, and ViewSonic's vController
- Supports most media players, PCs, Macs, and mobile devices with inputs such as HDMI, and USB



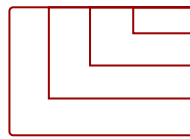
Flexible connectivity for your favorite devices



60 - 300 in. / 1.5 - 7.6 m
DISPLAY



PANEL



1920 x 1080
RESOLUTION



- x1 HDMI
- x1 USB 2.0 Type-A
- x1 RCA Audio (In)
- x2 Audio (In/Out)
- x1 RS232 In



Product Description

Featuring 1280x800 WXGA resolution, 3,000 LED lumens of brightness and a short throw lens, the ViewSonic® LS550WH is a lamp-free LED projector ideal for business and education. Its 0.49 short throw lens provides a 100" screen from just a few feet away, delivering exceptional space efficiency and freeing presenters from blinding lights. No matter the environment, expect stunning images and vivid colors, as this projector boasts 125% Rec. 709 color accuracy. With 2nd generation LED technology, the LS550WH eliminates the need to continuously swap out bulbs and dispose of toxic chemicals. In addition, an IP5X sealed optical engine prevents dust and moisture from entering the projector, ensuring impeccable image quality and a long maintenance-free lifespan of up to 30,000 hours.* An automatic on/off feature delivers efficiency and power savings, while 360° tilt angle projection delivers flexible setup in small- to medium-sized meeting rooms and classrooms. Whether for business or education, the ViewSonic LS550WH LED projector provides a picture-perfect presentation every time. *Lightsource lifespan may vary based on actual usage and other factors.

Specifications

	More Information
UPC	766907016741
Light Source	LED
Display Resolution	WXGA (1280x800)
Display Resolution	1280 x 800
Brightness (Lumens)	3,000 LED (2,000 ANSI)
Screen Size	60 - 300 in. / 1.5 - 7.6 m
Throw Distance	0.63m-1.58m (100"@1.06m)
Throw Ratio	0.49
Keystone	Vertical (+ 36°/- 40°) / Horizontal (+/- 40°)
Light Source (watt)	RGB LED
Light Source Life, Normal (hours)	30000
Color Depth	1.07 Billion Colors
Dynamic Contrast Ratio	3,000,000:1
Aspect Ratio	16:10
Input Lag	37ms
Frequency Horizontal	15K~102KHz
Frequency Vertical	23-120Hz
PC Resolution (max)	1920 x 1080
PC Resolution (min)	640 x 480
Mac® Resolution (max)	1920 x 1080
Mac® Resolution (min)	640 x 480
USB 2.0 Type A	1
3.5mm Audio Out	1
3.5mm Audio In	1
Control (RS232)	1
HDMI 1.4 (with HDCP 1.4)	1
RCA Audio In (L/R)	1
Internal Speakers	2W (x1)
Voltage	100-240 VAC, 50-60Hz
Consumption (typical)	157W
Stand-by	<0.5W
Physical Controls	Keypad, Power key

On Screen Display	Display, Image, Power Management, Basic, Advanced, System, Information (See user guide for full OSD functionality)
Temperature	32-104° F (0 - 40° C)
Kensington Lock Slot	1
Net (lbs)	5.4
Gross (lbs)	7.8
Net (kg)	2.5
Gross (kg)	3.6
Packaging (in.)	14.4 x 11.8 x 7.4
Physical (in.)	11.5 x 8.7 x 4.5
Packaging (mm)	365.0 x 300.0 x 188.0
Physical (mm)	293.0 x 221.0 x 115.0
AV Control	AMX Certified, Crestron Certified, Extron Certified
Regulations	cTUVus
Package Contents	LS550WH projector, power cable, remote control, Quick Start Guide
Warranty	Three-year limited warranty on parts and labor, 1-year limited warranty on the light source, 1st year free Express Exchange® service. (One year Express Exchange Service requires product registration).
Recycle/Disposal	Please dispose of in accordance with local, state or federal laws.

UPC: 766907016741



**3,000 LED LUMENS
AND WXGA RESOLUTION**



**GO BIG IN SMALL SPACES
WITH SHORT THROW PROJECTION**



Contact Sales
ViewSonic.com
 888.881.8781
 email:
salesinfo@viewsonic.com