

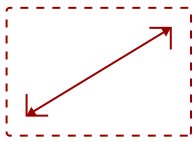
M2-S

## Key Features

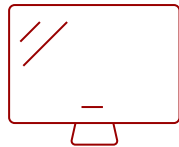
---

### REFURBISHED

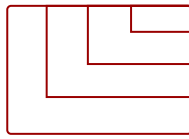
- 1080p Full HD
  - Cinema SuperColor+
  - Harman Kardon Speakers
  - Easy Screen Mirroring
  - Horizontal and Vertical Keystone Correction
  - Software Updates via Mini USB
- 



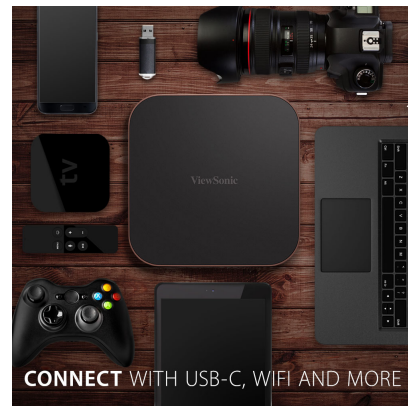
24 - 100 in. / 0.6 - 2.54 m  
**DISPLAY**



**PANEL**



1920 x 1080  
**RESOLUTION**



## Product Description

---

Ideal for business travelers on the go, the ViewSonic® M2 portable Full HD LED projector delivers power and performance in a portable package. Compact and lightweight, the ViewSonic M2 can be carried from office-to-office, or slipped into a briefcase or backpack and taken on the road. For convenient presentations and content sharing, a wireless screen mirroring feature allows users to easily cast content from a mobile device to the projector. The M2 projector features a shorter throw lens that can display large images in small spaces, while its LED light source provides over 30,000 hours\* of usage time and 1,200 lumens of brightness. An adjustable kickstand design delivers simple and quick setup for easy projection in nearly any environment. An integrated Micro SD card slot and USB Type-A reader port allow users to display documents, videos, and other multimedia without having to connect to a PC. And for fast data, audio, video, and charging over a single cable, there's a USB Type-C port. For more immersive multimedia presentations, dual Harman Kardon speakers deliver room-filling sound to keep audiences engaged.

\*Light source lifespan may vary based on actual usage and other factors.

## Specifications

---

### More Information

<b>UPC</b>	766907007794
<b>Light Source</b>	LED
<b>Display Resolution</b>	Full HD (1920x1080)

<b>Display Resolution</b>	1920 x 1080
<b>Brightness (Lumens)</b>	1,200 LED
<b>Screen Size</b>	24 - 100 in. / 0.6 - 2.54 m
<b>Throw Distance</b>	2.1 - 8.9 ft / 0.6 - 2.7 m
<b>Throw Ratio</b>	1.23
<b>Keystone</b>	Vertical ( $\pm 30^\circ$ ) / Horizontal ( $\pm 30^\circ$ )
<b>Light Source (watt)</b>	RGBB LED
<b>Light Source Life, Normal (hours)</b>	30000
<b>Color Depth</b>	1.07B Color (R/G/B 10bit)
<b>Aspect Ratio</b>	16:9
<b>Input Lag</b>	37ms
<b>Frequency Horizontal</b>	30K-97KHz
<b>Frequency Vertical</b>	24-85Hz
<b>PC Resolution (max)</b>	1920 x 1080
<b>PC Resolution (min)</b>	640 x 480
<b>Mac® Resolution (max)</b>	1920 x 1080
<b>Mac® Resolution (min)</b>	640 x 480
<b>USB 3.0 Type A</b>	2
<b>USB 3.1 Type C</b>	1
<b>3.5mm Audio Out</b>	1
<b>HDMI 2.0 (with HDCP 2.2)</b>	1
<b>Micro USB</b>	1
<b>Internal Speakers</b>	3W (x2)
<b>Consumption (typical)</b>	74W
<b>Stand-by</b>	<0.5W
<b>On Screen Display</b>	Display, Image, Power Management, Basic, Advanced, System, Information (See user guide for full OSD functionality)
<b>Temperature</b>	32-104° F (0 - 40° C)
<b>Humidity (non-condensing)</b>	0-90%
<b>Kensington Lock Slot</b>	1
<b>Net (lbs)</b>	2.9
<b>Gross (lbs)</b>	6.9
<b>Net (kg)</b>	1.3
<b>Gross (kg)</b>	3.2
<b>Physical (in.)</b>	8.8 x 2.9 x 8.8
<b>Packaging (mm)</b>	384.0 x 381.0 x 287.0

<b>Physical (mm)</b>	261.0 x 166.0 x 271.0
<b>Regulations</b>	FCC, cTUVus, ROHS
<b>Package Contents</b>	M2 projector, carrying case, power cable, USB-C cable, remote control, Quick Start Guide
<b>Warranty</b>	*Refurbished. 30-day DOA policy for full refund, with a 90-day repair warranty on parts and labor.
<b>Recycle/Disposal</b>	Please dispose of in accordance with local, state or federal laws.
<b>Classification</b>	Refurbished
<b>Portability</b>	Portable

UPC: 766907007794



**Contact Sales**  
[ViewSonic.com](http://ViewSonic.com)  
 888.881.8781  
 email:  
[salesinfo@viewsonic.com](mailto:salesinfo@viewsonic.com)