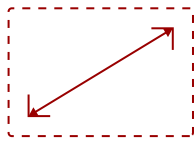


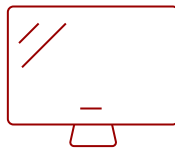
IFP5550-E4 - 55" 4K TOUCH ENABLED VIEWBOARD SMART DISPLAY WITH WIFI ADAPTER AND SLIM TROLLEY CART

Key Features

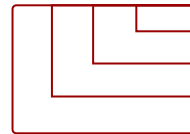
- **ULTRA HD RESOLUTION:** 55 Inch 4K Ultra HD (3840x2160p) interactive display
- **ADVANCED TOUCH:** 40-point multi-touch lets users write on the display with their fingers and stylus pens
- **INTEGRATED SOFTWARE:** The myViewBoard suite includes Whiteboard, ViewBoard Cast, and more for better engagement
- **BETTER SOUND:** Built-in 40W stereo soundbar delivers optimal sound
- **FLEXIBLE CONNECTIVITY:** Powerful quad-core processor and versatile connectivity options with 65W PD USB-C (HDMI, RJ45, and USB ports)
- **EVERYTHING TO GET STARTED:** This bundle includes the interactive display, wireless AC adapter and slim mobile cart
- **REMOTE MANAGEMENT:** Schedule updates and monitor device status with the built-in myViewBoard® Manager software
- **PEACE OF MIND:** Industry-leading 3-year standard warranty with optional extensions and robust support services



55
DISPLAY



PANEL



RESOLUTION

Product Description

Ideal for education environments, this all-in-one ViewBoard Bundle includes a 55" ViewBoard IFP5550 4K interactive flat panel, a wireless AC adapter

Specifications

More Information

OS	Android 11
GPU	ARM Mali-G51
CPU	ARM Quad Core Cortex A73+A53
CPU Processor Speed	1.1GHz

Memory	4GB
Storage	32GB
Internal Speakers	12W (x2)
Subwoofer	16W (x1)
HDMI 2.0 In	3
HDMI Out	1
3.5mm Audio Out	1
SPDIF Audio Out	1
USB 3.0	4
USB 2.0	2
USB Type C	1
USB B Touch Port	2
RS232	1
Ethernet LAN (RJ45)	2
WIFI Module Slot	1
Intel® OPS Slot In (80-pin)	1
Voltage	100-240 VAC
Consumption (typical)	89W
Stand-by	<0.5W
On Screen Display	Input, Volume, Backlight, Audio, Screen, Display, Adjust
Remote Control	Volume, Channel, Source, Mute, Back, Input, Menu
Temperature	32-104° F (0 - 40° C)
Humidity (non-condensing)	10-90%
Touch Technology	Infrared
Touch Points	40-Point Touch
Tip Detection	Dual tips, 2.5mm and 8mm
Net (lbs)	117.57
Gross (lbs)	148.58
Net (kg)	53.33
Gross (kg)	67.39
Packaging (in.)	56.2 x 34.6 x 8.7
Physical (in.)	49.9 x 30.4 x 3.3
Packaging (mm)	1428.0 x 878.0 x 220.0
Physical (mm)	1268.0 x 773.0 x 85.0
VESA Compatible	400 x 200 mm
Warranty	3-year limited warranty on parts, labor and backlight, onsite warranty

Recycle/Disposal	Please dispose of in accordance with local, state or federal laws.
Package Contents	IFP5550-5 display, WiFi Card, stylus pen x 2, power cable, remote control with batteries, ViewSonic Wizard CD (User Guide), Quick Start Guide
Regulations	cTUVus, FCC, Mexico Energy, CE, CB, RoHS, ErP, WEEE
Ethernet LAN	(10/100/1000M) (Android 10/100, PC 10/100/1000)
Display Type	LCD
Screen Size	55
Viewable Area (in.)	54.6
Light Source	LED
Display Resolution	3840 x 2160
Aspect Ratio	16:9
Static Contrast Ratio	1,200:1
Backlight Life (Hours)	50,000
Brightness	350 cd/m2
Response Time (Typical GTG)	8ms
Viewing Angles	178° horizontal, 178° vertical
Panel Surface	Anti-glare 7H tempered glass
Operation Rating	16/7

Contact Sales

ViewSonic.com

888.881.8781

email: salesinfo@viewsonic.com