

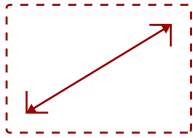
M1+-S

## Key Features

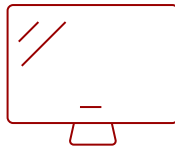
---

### REFURBISHED

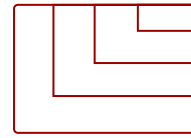
- Advanced LED Light Source
  - 360-degree projection with Smart Stand
  - Dual Harman Kardon Bluetooth Speakers
  - Smart TV Enabled
  - Hours of Entertainment
  - USB Type-C for Video and Power
- 



24 - 100 in. / 0.6 - 2.54 m  
**DISPLAY**



**PANEL**



1920 x 1080  
**RESOLUTION**



## Product Description

---

The ViewSonic® M1+ is an ultra-portable WVGA LED projector that delivers convenient entertainment in nearly any room. With a built-in battery and over 30,000 hours of operational life, this projector will deliver years of multimedia entertainment wherever it goes. Weighing less than two pounds, the M1+'s compact and lightweight design makes it ideal for moving from room to room, or for indoor/outdoor usage. An integrated smart stand provides for simple 360-degree setup, while also doubling as a lens cover. Once the lens is uncovered, the projector automatically powers on with full brightness for instant entertainment. The lens also includes a safety auto-off feature that powers down the projector when objects are detected too close to the lens. Dual Harman Kardon Bluetooth speakers provide crisp and clear sound for multimedia content, while a short throw lens can display large images in small spaces. Versatile connectivity options include a MicroSD card slot, USB Type-A and USB Type-C. What's more, integrated smart Wi-Fi connectivity lets you stream and binge from your favorite content providers like YouTube - making the M1+ a great option for sharing and displaying videos and other multimedia content.

## Specifications

---

### More Information

<b>UPC</b>	766907004168
<b>Light Source</b>	LED
<b>Display Resolution</b>	WVGA (854x480)
<b>Display Resolution</b>	854 x 480
<b>Brightness (Lumens)</b>	300 LED
<b>Screen Size</b>	24 - 100 in. / 0.6 - 2.54 m

<b>Throw Distance</b>	40 in / 1.0 m
<b>Throw Ratio</b>	1.2
<b>Keystone</b>	Vertical (+/- 40°)
<b>Lens</b>	Fixed Zoom
<b>Light Source (watt)</b>	10
<b>Light Source Life, Normal (hours)</b>	30000
<b>Light Source Life, Dynamic Eco-Mode (hours)</b>	30000
<b>Color Depth</b>	1.07B Color (R/G/B 10bit)
<b>Dynamic Contrast Ratio</b>	120,000:1
<b>Aspect Ratio</b>	16:9
<b>Input Lag</b>	37ms
<b>Frequency Horizontal</b>	15h~135kHz
<b>Frequency Vertical</b>	23~120Hz
<b>PC Resolution (max)</b>	1920 x 1080
<b>PC Resolution (min)</b>	640 x 480
<b>Mac® Resolution (max)</b>	1920 x 1080
<b>Mac® Resolution (min)</b>	640 x 480
<b>USB 2.0 Type A</b>	1
<b>USB 3.1 Type C</b>	1
<b>Card Reader</b>	Micro SD
<b>3.5mm Audio Out</b>	1
<b>HDMI 1.4 In</b>	1
<b>Internal Speakers</b>	3W (x2)
<b>Voltage</b>	100-240 VAC
<b>Consumption (typical)</b>	55W
<b>Stand-by</b>	<0.5W
<b>Physical Controls</b>	Power, keystone/arrow keys, left/blank, menu/exit, right/panel key lock, mode/enter, auto, source
<b>On Screen Display</b>	Display, Image, Power Management, Basic, Advanced, System, Information (See user guide for full OSD functionality)
<b>Temperature</b>	32-104° F (0 - 40° C)
<b>Humidity (non-condensing)</b>	0-90%
<b>Net (lbs)</b>	1.7
<b>Gross (lbs)</b>	3.7
<b>Net (kg)</b>	0.8
<b>Gross (kg)</b>	1.7
<b>Packaging (in.)</b>	16.0 x 9.2 x 15.0

<b>Physical (in.)</b>	5.7 x 1.6 x 5.0
<b>Packaging (mm)</b>	406.0 x 233.0 x 380.0
<b>Physical (mm)</b>	146.0 x 40.0 x 126.0
<b>Regulations</b>	FCC, cTUVus, ROHS, TUV-S, NOM, UL2054
<b>Package Contents</b>	M1+ projector, power cable, USB-C cable, remote control, Quick Start Guide
<b>Warranty</b>	*Refurbished. 30-day DOA policy for full refund, with a 90-day repair warranty on parts and labor.
<b>Recycle/Disposal</b>	Please dispose of in accordance with local, state or federal laws.
<b>Classification</b>	Refurbished

UPC: 766907004168



### Contact Sales

[ViewSonic.com](http://ViewSonic.com)

888.881.8781

email: [salesinfo@viewsonic.com](mailto:salesinfo@viewsonic.com)