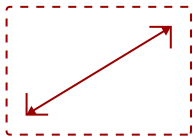


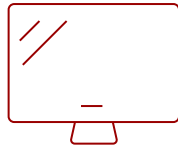
CDE5010 - 50" DISPLAY, 3840 X 2160 RESOLUTION, 350 CD/M2 BRIGHTNESS, 16/7

Key Features

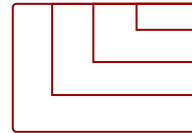
- Ultra HD Resolution
- Built-in Multi-Core Media Player with 8GB Storage
- Embedded LAN, Optional Wi-Fi, Internet Browser
- ViewBoard® Cast Content Sharing Software
- Free Bundled vController™ Software



50
DISPLAY



PANEL



RESOLUTION



Product Description

The ViewSonic® CDE5010 is a 50'' (50'' viewable) 4K Ultra HD commercial display purpose-built to deliver eye-catching imagery for hotels, restaurants, retail, business, and more. With stunning 3840x2160 resolution, 350-nit high brightness, wide viewing angles, and dual 10W speakers, this display provides immersive, high-impact messaging wherever needed. In addition to HDMI, DVI, and VGA inputs to connect with various high definition devices, this display utilizes an integrated multi-core processor and 8GB of internal memory, allowing customers to playback multimedia content via USB without the need for a PC. To make life even easier, the bundled vController software offers easy maintenance and intuitive interfaces for remote management via a PC server or laptop, and flicker-free and blue light filter technologies help provide a comfortable viewing environment.

Specifications

More Information

UPC	766907990416
Media Player Type	Yes
CPU	Quad Core - Cortex A53
Memory	2GB
Storage	8GB eMMC
Built-in Software	OSD / Remote Control
Internal Speakers	10W (x2)
HDMI 2.0 In	2
DVI-D	1

VGA	1
RCA Audio Out	1
3.5mm Audio In	1
USB 3.0	1
USB 2.0	1
RS232	1
RS232 Out	1
Ethernet LAN (RJ45)	1
Micro SD Card Slot	1
IR in	1
IR out	1
Intel® OPS Slot In (80-pin)	1
Voltage	100-240 VAC +/- 10% Wide Range, 50-60Hz +/-3 Hz
Consumption (max)	175W
Consumption (typical)	140W
Stand-by	<0.5W
Temperature	41-104° F (5 - 40° C)
Humidity (non-condensing)	20-80%
Net (lbs)	32.9
Net Without Stand (lbs)	28.7
Gross (lbs)	36.4
Net (kg)	14.9
Net Without Stand (kg)	13.0
Gross (kg)	16.5
Packaging (in.)	50.5 x 33.3 x 8.0
Physical (in.)	44.2 x 27.0 x 13.0
Physical Without Stand (in.)	44.2 x 25.5 x 2.7
Packaging (mm)	1282.0 x 845.0 x 203.0
Physical (mm)	1123.6 x 685.9 x 329.6
Physical Without Stand (mm)	1123.6 x 646.7 x 67.8
VESA Compatible	400 x 400 mm
Screw Size	M6
Screw Length (mm)	10
Recycle/Disposal	Please dispose of in accordance with local, state or federal laws.
Package Contents	CDE5010, Remote control, CD User Manual, Quick Start Guide, Power cables, VGA cable, RS232 cable, IR sensor cable, RS232 daisy chain cable

Regulations	cULus, FCC, Energy Star 7.0, UL-MX-CoC, Mexico Energy
Screen Size	50
Viewable Area (in.)	50
Light Source	DLED
Display Resolution	3840 x 2160
Aspect Ratio	16:9
Static Contrast Ratio	4,000:1
Backlight Life (Hours)	30,000
Brightness	350 cd/m2
Response Time (Typical GTG)	8ms
Viewing Angles	178° horizontal, 178° vertical
Panel Surface	Anti-glare, Hard coating (3H)
Operation Rating	16/7

UPC: 766907990416



Contact Sales

ViewSonic.com

888.881.8781

email: salesinfo@viewsonic.com