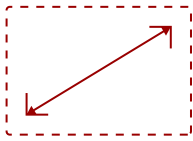
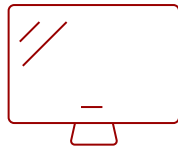
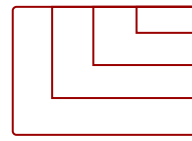


VX3211-2K-MHD-S

Key Features

REFURBISHED

- Wide Quad HD Resolution
 - SuperClear® IPS Panel Technology
 - The Power of HDMI
 - Slim Bezel Design
 - Optimized View Settings
-

**32
DISPLAY****IPS
PANEL****2560 x 1440
RESOLUTION**

Product Description

Whether for office use or home entertainment, the ViewSonic® VX3211-2K-mhd monitor is designed to take your viewing experience to a higher level. The VX3211-2K-mhd is a 32" WQHD monitor loaded with solid multimedia features, flexible connectivity options, wide-angle viewing, and amazing screen performance with 99% sRGB color coverage. Featuring stunning 2560 x 1440 resolution and a slim bezel design, this monitor provides 70% more on-screen content than Full HD monitors, making project management and multitasking easier than before. Versatile HDMI, DisplayPort, and VGA* inputs keep you connected to your favorite devices.

*VGA support for up to 1080p resolution only

Specifications

More Information

UPC	766907950311
Screen Size	32
Viewable Area (in.)	31.5
Panel Type	IPS
Display Resolution	2560 x 1440
Static Contrast Ratio	1,200:1
Dynamic Contrast Ratio	80M:1
Light Source	LED

Brightness	250 cd/m2
Colors	1.07B
Color Space Support	10-Bit
Aspect Ratio	16:9
Response Time (Typical GTG)	8ms
Response Time (GTG w/OD)	3ms
Viewing Angles	178° horizontal, 178° vertical
Backlight Life (Hours)	30,000
Panel Surface	Anti-glare, Hard coating (3H)
PC Resolution (max)	2560 x 1440
Mac® Resolution (max)	2560 x 1440
3.5mm Audio In	1
3.5mm Audio Out	1
VGA	1
HDMI 1.4 In	1
DisplayPort	1
Internal Speakers	2.5W (x2)
Eco Mode (Conserve)	35W
Eco Mode (optimized)	42W
Consumption (typical)	55W
Consumption (max)	65W
Voltage	AC 100-240V (universal), 50-60Hz
Stand-by	0.3W
Cable Organization	No
Kensington Lock Slot	1
Physical Controls	1, 2, 3, 4, 5, Power
On Screen Display	Auto Image Adjust, Contrast/Brightness, Input Select, Audio Adjust, Color Adjust, Information, Manual Image Adjust, Advanced Image Adjust, Setup Menu, Memory Recall (See user guide for complete OSD functionality)
Temperature	32-104° F (0 - 40° C)
Humidity (non-condensing)	20-90%
VESA Compatible	100 x 100 mm
Frequency Horizontal	24 ~ 99KHz
Frequency Vertical	24 ~ 75Hz
Analog Sync	Separate Sync / Composite Sync / Sync on Green
Digital Sync	TMDS, PCI-E
Tilt (Forward/Back)	5° / 13°

Net (lbs)	15.5
Net Without Stand (lbs)	13.6
Gross (lbs)	22.6
Net (kg)	7.0
Net Without Stand (kg)	6.2
Gross (kg)	10.2
Packaging (in.)	33.0 x 24.2 x 11.1
Physical (in.)	28.7 x 19.5 x 9.1
Physical Without Stand (in.)	28.7 x 17.0 x 2.3
Packaging (mm)	838 x 615 x 282
Physical (mm)	729.7 x 495.5 x 230.0
Physical Without Stand (mm)	729.7 x 432.8 x 58.3
Regulations	cULus, FCC-B, ICES003, UL-MX-CoC, Mexico Energy, CE, REACH, EEL, WEEE, EAC, UkrSEPRO
Package Contents	LCD Display, Power Cable , HDMI Cable , Audio Cable , Quick Start Guide
Recycle/Disposal	Please dispose of in accordance with local, state or federal laws.
Warranty	*Refurbished. 30-day DOA policy for full refund, with a 90-day repair warranty on parts and labor.
Classification	Refurbished

UPC: 766907950311



Contact Sales

ViewSonic.com

888.881.8781

email: salesinfo@viewsonic.com