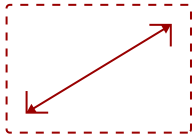


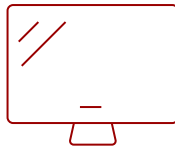
PS600X - 3700 LUMENS XGA NETWORKABLE SHORT THROW PROJECTOR

Key Features

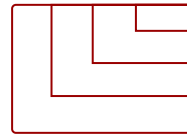
- High brightness 3700 Lumens XGA projector with 0.61 short throw and advanced visual features
 - 0.61 throw ratio, H/V keystone and corner adjustment for flexible setup
 - SuperEco Mode allows the lamp to shine bright for up to 15,000 hours
 - 6 segment color wheel and dynamic lamp control capabilities provide vivid colors
 - A low 16ms input latency provides faster frame-by-frame action for smooth images without delay
 - Supports most media players, PCs, Macs, and mobile devices with inputs such as Dual HDMI, USB, Ethernet LAN
-



30 - 300 in. / 0.76 - 7.62 m
DISPLAY



PANEL



1920 x 1080
RESOLUTION



Product Description

The ViewSonic® PS600X networkable projector features 3,700 lumens, native XGA 1024x768 resolution, and an intuitive, user-friendly design. Exclusive SuperColor™ technology offers a wide color gamut for beautiful image production in nearly any environment, and a 10W speaker delivers incredibly clear and audible sound. A short throw lens with a 0.61 throw ratio offers large projection images for smaller rooms. With HV keystone, corner adjustment, and easy network management, the PS600X provides flexible setup. Designed with smarter features and extensive connectivity, the networkable short throw PS600X is ideal for use in education and corporate environments.

Specifications

| | More Information |
|----------------------------|---|
| UPC | 766907958218 |
| Light Source | DLP Lamp |
| Display Resolution | XGA (1024x768) |
| Display Resolution | 1024 x 768 |
| Brightness (Lumens) | 3,700 ANSI |
| Screen Size | 30 - 300 in. / 0.76 - 7.62 m |
| Throw Distance | 2.4 - 7.3 ft / 0.7 - 2.2 m |
| Throw Ratio | 0.6 |
| Keystone | Vertical (+/- 40°) / Horizontal (+/- 26°) |

| | |
|--|--|
| Lens | Fixed Zoom |
| Light Source (watt) | 190 |
| Light Source Life, Normal (hours) | 5000 |
| Light Source Life, Dynamic Eco-Mode (hours) | 15000 |
| Color Depth | 1.07B Color (R/G/B 10bit) |
| Dynamic Contrast Ratio | 22,000:1 |
| Aspect Ratio | 4:3 |
| Input Lag | 37ms |
| Frequency Horizontal | 15K ~ 102KHz |
| Frequency Vertical | 23 ~ 120Hz |
| PC Resolution (max) | 1920 x 1080 |
| PC Resolution (min) | 640 x 480 |
| Mac® Resolution (max) | 1920 x 1080 |
| Mac® Resolution (min) | 640 x 480 |
| USB 2.0 Type A | 1 |
| Ethernet LAN (RJ45) | 1 |
| 3.5mm Audio Out | 1 |
| 3.5mm Audio In | 1 |
| Control (RS232) | 1 |
| HDMI 1.4 In | 2 |
| VGA In | 2 |
| VGA Out | 1 |
| Composite RCA Video In | 1 |
| Mini USB | 1 |
| Internal Speakers | 10W (x1) |
| Voltage | 100-240V+/- 10%, 50/60Hz AC |
| Consumption (typical) | 260W |
| Stand-by | <0.5W |
| Physical Controls | Power, keystone/arrow keys, left/blank, menu/exit, right/panel key lock, mode/enter, auto, source |
| On Screen Display | Display, Image, Power Management, Basic, Advanced, System, Information (See user guide for full OSD functionality) |
| Temperature | 32-104° F (0 - 40° C) |
| Humidity (non-condensing) | 0-90% |
| Kensington Lock Slot | 1 |
| Net (lbs) | 5.7 |
| Gross (lbs) | 7.2 |

| | |
|-------------------------|--|
| Net (kg) | 2.6 |
| Gross (kg) | 3.3 |
| Packaging (in.) | 14.4 x 7.4 x 11.8 |
| Physical (in.) | 11.5 x 4.5 x 9.3 |
| Packaging (mm) | 365.0 188.0 x 300.0 |
| Physical (mm) | 292.0 x 115.0 x 236.0 |
| AV Control | AMX Certified, ATEN Certified, Crestron Certified, PJ Link Certified |
| Regulations | FCC, cTUVus, ROHS |
| Package Contents | PS600X projector, power cable, VGA cable, remote control, Quick Start Guide |
| Warranty | Three-year limited warranty on parts and labor, 1-year limited warranty on lamp, 1st year free Express Exchange® service. (One year Express Exchange Service requires product registration). |
| Recycle/Disposal | Please dispose of in accordance with local, state or federal laws. |

UPC: 766907958218



Contact Sales

ViewSonic.com

888.881.8781

email: salesinfo@viewsonic.com