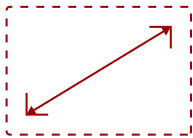


CDE6561T-S

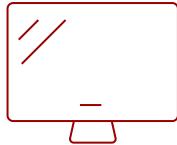
Key Features

REFURBISHED

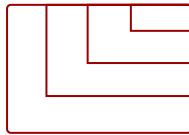
- 10-point multi-touch interactive screen
- Built-in ARM dual core CPU with 8GB Storage
- Pre-installed ViewBoard® Lite Software
- Control multiple devices with HDMI CEC and IR pass-through



65
DISPLAY



PANEL



RESOLUTION



Product Description

The ViewSonic® CDE6561T 65" (64.5" viewable) Full HD ViewBoard® interactive flat panel display is a perfect solution for interactive business and educational classroom applications. This 10-point touch-enabled display, paired with PC-less operation and pre-installed annotation software, allows multiple users to simultaneously write or draw on the display's 7H hardness surface using fingers or styluses. 350-nit brightness and wide viewing angles provide better visual performance in well-lit rooms, while Flicker-Free and Blue Light filter technologies create a more comfortable viewing environment. With a built-in dual core processor and 8GB internal storage, as well as versatile connectivity including HDMI, VGA, RS232, RJ45 and USB ports, this display provides powerful computing for annotation and multimedia playback without the need for a PC. The CDE6561T features a VESA-compatible design and can be placed on a wall mount, or on an optional trolley cart for flexible installation in classrooms and corporate meeting rooms.

For more detailed information on how ViewSonic ViewBoards can best be utilized in a school environment, see our [ViewBoard FAQs](#).

Specifications

More Information

UPC	766907874013
OS	4.2.1
CPU	ARM Cortex A9 Dual Core Processor
Memory	1.5 GB

Storage	8GB
Built-in Software	Setting, Annotation, Viewboard Lite, Interface
Internal Speakers	10W (x2)
HDMI In	3
VGA	3
VGA Out	1
RCA Audio In	3
3.5mm Audio Out	1
SPDIF Audio Out	1
USB 3.0	1
USB 2.0	3
Ethernet LAN (RJ45)	1
Intel® OPS Slot In (80-pin)	1
Voltage	100-240 VAC, 50-60Hz
Consumption (typical)	211W
On Screen Display	Input, Volume, Backlight, Audio, Screen, Display, Adjust
Temperature	32-104° F (0 - 40° C)
Humidity (non-condensing)	20-80%
Touch Technology	Infrared
Touch Points	10-Point Touch
Net (lbs)	100.3
Gross (lbs)	125.7
Net (kg)	45.5
Gross (kg)	57
Packaging (in.)	66.8 x 42.2 x 8.7
Physical (in.)	60.0 x 36.4 x 3.9
Packaging (mm)	1697 x 1071 x 220
Physical (mm)	1523 x 924 x 98
VESA Compatible	600 x 400 mm
Warranty	*Refurbished. 30-day DOA policy for full refund, with a 90-day repair warranty on parts and labor.
Recycle/Disposal	Please dispose of in accordance with local, state or federal laws.
Package Contents	CDE6561T display, power cable, VGA cable, audio cable, USB cable, RS232 adapter, remote control with batteries, stylus (x3), ViewSonic Wizard CD (User Guide and ViewBoard software)
Regulations	FCC, cTUVus, CE, RCM
Notices	*Requires NMP711-P10, NMP712-N or Windows PC. Programs, specifications and availability are subject to change without notice. Selection, offers and programs may vary by country; see your ViewSonic representative for complete details. HDMI, the HDMI logo

Classification	Discontinued
Screen Size	65
Viewable Area (in.)	64.5
Light Source	LED
Display Resolution	1920 x 1080
Aspect Ratio	16:9
Static Contrast Ratio	1,400:1
Backlight Life (Hours)	50,000
Brightness	350 cd/m2
Response Time (Typical GTG)	8ms
Viewing Angles	178° horizontal, 178° vertical
Panel Surface	Anti-glare 7H tempered glass

UPC: 766907874013



Contact Sales

ViewSonic.com

888.881.8781

email:

salesinfo@viewsonic.com