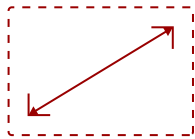


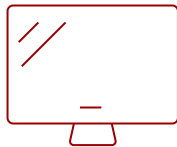
VP2468_H2 - 24" COLORPRO™ 1080P DUAL PACK HEAD-ONLY IPS MONITORS WITH DAISY CHAIN

Key Features

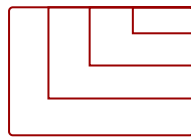
- 24 Inch Full HD (1920x1080p) IPS monitors with 60Hz refresh rate
- Sold as a dual pack without monitor stands for easy dual-screen installation
- Flicker-Free technology and Blue Light Filter for reduced eye fatigue
- 100% sRGB, EBU, SMPTE-C, Rec. 709, and DICOM-SIM color spaces and Delta E<2 accuracy
- The VP2468_H2 supports laptops, PCs, Macs and more with USB, HDMI, DP (DaisyChain enabled) and mini DP inputs



24
DISPLAY



IPS
PANEL



1920x1080
RESOLUTION



Product Description

If you're looking for professional monitors that deliver unmatched color accuracy, as well as easy deployment and mounting capabilities, look no further than the ViewSonic® VP2468_H2. Sold as a dual pack of monitors without monitor stands, the VP2468_H2 requires less packaging for a reduced environmental footprint, while still providing VESA-compatible mounting for easy dual-screen installation. With edge-to-edge SuperClear® IPS panels and one of the world's thinnest bezels, the VP2468_H2 provides a sleek and frameless viewing experience ideal for dual-monitor setup. For simple, single-cable daisy chaining, these monitors are equipped with future-proof DisplayPort technology, in addition to HDMI ports. To ensure precise, uniform color, these monitors are factory calibrated to deliver an amazing Delta E<2 value. An integrated color uniformity function ensures consistent chromaticity across the screen, while a 14-bit 3D look-up table generates a stunningly smooth palette of 4.39 trillion colors. Add to that 6-axis color adjustment functionality, and this monitor provides the ultimate color processing capability for professional applications.

[Download the ColorPro brochure.](#)

Specifications

	More Information
UPC	766907895728
Screen Size	24
Viewable Area (in.)	23.8
Panel Type	IPS
Display Resolution	1920 x 1080
Static Contrast Ratio	1,000:1
Dynamic Contrast Ratio	20,000,000:1
Light Source	LED
Brightness	250 cd/m2
Colors	16.7M
Color Space Support	6-bit+A-FRC
Aspect Ratio	16:9
Response Time (Typical GTG)	14ms
Response Time (GTG w/OD)	7ms
Viewing Angles	178° horizontal, 178° vertical
Backlight Life (Hours)	30,000
Panel Surface	Anti-glare, Hard coating (3H)
PC Resolution (max)	1920x1080
USB Type A	4
USB Type B	1
HDMI 1.4 In	2
DisplayPort	1
DisplayPort Out	1
Mini DisplayPort	1
Eco Mode (Conserve)	17W
Eco Mode (optimized)	19W
Consumption (typical)	22W
Consumption (max)	48W
Voltage	AC 100-240V (universal), 50-60Hz
Stand-by	0.3W
Cable Organization	No
Kensington Lock Slot	1
Physical Controls	Power, 1, 2, 3, 4, 5

On Screen Display	Input Select, Audio Adjust, ViewMode, Color Adjust, Manual Image Adjust, Setup Menu (See user guide for complete OSD functionality)
Temperature	32-104° F (0 - 40° C)
Humidity (non-condensing)	20-90%
VESA Compatible	100 x 100 mm
Frequency Horizontal	HDMI (v.1.4): 15 ~ 90KHz. DisplayPort (v1.2) & Mini DP (v1.2): 15 ~ 88KHz
Frequency Vertical	24 ~ 75Hz
Digital Sync	TMDS, PCI-E
Net (lbs)	7.03
Gross (lbs)	22.16
Net (kg)	3.19
Gross (kg)	10.05
Packaging (in.)	25.0 x 16.5 x 10.0
Physical (in.)	21.2 x 12.2 x 1.9
Packaging (mm)	635 x 420 x 252
Physical (mm)	538.7 x 310.5 x 48.1
Regulations	CB, CE, WEEE, RoHS Green, ErP, REACH, UL, FCC-B, Mexico CoC, EPEAT, ENERGY STAR, Mexico Energy
Package Contents	LCD Display x2, Power Cable x2, Mini DP to DP Cable x2, USB 3.0 UP Stream Cable (Type B to A) x2, Quick Start Guide, ViewSonic Wizard CD-ROM
Recycle/Disposal	Please dispose of in accordance with local, state or federal laws.
Warranty	Three-year limited warranty on parts, labor and backlight

UPC: 766907895728



Contact Sales

ViewSonic.com

888.881.8781

email:

salesinfo@viewsonic.com