

## VA2759-SMH - 27" 1080P IPS MONITOR WITH FREESYNC, HDMI AND VGA INPUTS

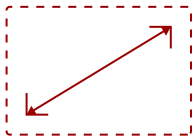
### Key Features

---

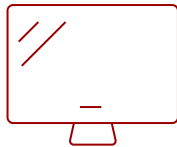
- 27 Inch Full HD (1920x1080p) IPS monitor with 100Hz refresh rate
- Optimized view settings offer “Game,” “Movie,” “Web,” “Text,” and “Mono” presets
- The VA2759-SMH supports laptops, PCs, Macs and more with HDMI, and VGA inputs



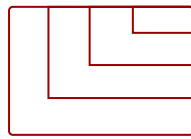
What's in the box.



27  
DISPLAY



IPS  
PANEL



1920x1080  
RESOLUTION



VA2759-SMH Monitor

\*Power Cable varies by region



Power Cable\*



HDMI Cable



QuickStart Guide

### Product Description

---

With flexible connectivity, wide-angle viewing, and amazing screen performance, the ViewSonic® VA2759-smh delivers solid multimedia features and a sleek design at a great value. Featuring SuperClear IPS panel technology, the 27" VA2759-smh delivers stunning brightness and contrast at nearly any viewing angle. A minimalistic design, edge-to-edge screen, and frameless bezel make this an ideal monitor for nearly seamless multi-screen setups. Whether for working at the office, or enjoying entertainment at home, the VA2759-smh also features an HDMI port for flexible connectivity to PCs, laptops, gaming consoles, and other multimedia devices. In addition, a 3-year limited warranty, along with one of the industry's best pixel performance policies, makes the VA2759-smh a great overall value choice.

### Specifications

---

<b>UPC</b>	766907837513
<b>Screen Size</b>	27
<b>Viewable Area (in.)</b>	27
<b>Panel Type</b>	IPS
<b>Display Resolution</b>	1920 x 1080
<b>Static Contrast Ratio</b>	1,300:1
<b>Dynamic Contrast Ratio</b>	50,000,000:1
<b>Light Source</b>	LED
<b>Brightness</b>	250 cd/m2
<b>Colors</b>	16.7M
<b>Response Time (Typical GTG)</b>	4ms
<b>Viewing Angles</b>	178° horizontal, 178° vertical
<b>Backlight Life (Hours)</b>	30,000
<b>Panel Surface</b>	Anti-Glare type, Hard-coating (3H), Haze 25%
<b>Refresh Rate</b>	100Hz
<b>PC Resolution (max)</b>	1920x1080
<b>Mac® Resolution (max)</b>	1920x1080
<b>3.5mm Audio In</b>	1
<b>3.5mm Audio Out</b>	1
<b>HDMI In</b>	1
<b>VGA</b>	1
<b>Power in</b>	3-pin plug (CEE22)
<b>Internal Speakers</b>	2-watt (x2)
<b>Eco Mode (Conserve)</b>	13W
<b>Eco Mode (optimized)</b>	16W
<b>Consumption (typical)</b>	19W
<b>Consumption (max)</b>	26W
<b>Voltage</b>	AC 100-240V (universal), 50-60Hz
<b>Stand-by</b>	0.5W
<b>Power Supply</b>	Internal
<b>Cable Organization</b>	No
<b>Kensington Lock Slot</b>	1
<b>Physical Controls</b>	Key 1 (favorite), Key 2, Key 3, Key 4, Key 5 (power)
<b>On Screen Display</b>	Input Select, Audio Adjust, ViewMode, Color Adjust, Manual Image Adjust, Setup Menu
<b>Temperature</b>	32-104° F (0 - 40° C)
<b>Humidity (non-condensing)</b>	20-90%

<b>VESA Compatible</b>	100 x 100 mm
<b>Frequency Horizontal</b>	24 ~ 86 KHz
<b>Frequency Vertical</b>	48 ~ 75 Hz
<b>Analog Sync</b>	Separate Sync, Composite Sync, Sync on Green, TMDS
<b>Tilt (Forward/Back)</b>	2° / 20°
<b>Net (lbs)</b>	9.7
<b>Net Without Stand (lbs)</b>	8.2
<b>Gross (lbs)</b>	13.2
<b>Net (kg)</b>	4.4
<b>Net Without Stand (kg)</b>	3.7
<b>Gross (kg)</b>	6.0
<b>Packaging (in.)</b>	27.4 x 18.4 x 5.7
<b>Physical (in.)</b>	24.2 x 17.5 x 9.3
<b>Physical Without Stand (in.)</b>	24.2 x 14.1 x 1.9
<b>Packaging (mm)</b>	697.0 x 467.0 x 144.0
<b>Physical (mm)</b>	615.0 x 444.0 x 235.0
<b>Physical Without Stand (mm)</b>	615.0 x 358.0 x 48.0
<b>Regulations</b>	cTUVus, FCC-B, ICES003, Energy Star 8.0, EPEAT Silver, CEC, NOM, Mexico Energy, CB, RoHS
<b>Package Contents</b>	VA2759-SMH x1, 3-pin Plug (IEC C13 / CEE22) x1, HDMI Cable (v1.4; Male-Male) x1, Quick Start Guide x1
<b>Recycle/Disposal</b>	Please dispose of in accordance with local, state or federal laws.
<b>Warranty</b>	Three-year limited warranty on parts, labor and backlight

UPC: 766907837513



**Contact Sales**  
[ViewSonic.com](http://ViewSonic.com)  
 888.881.8781  
 email:  
[salesinfo@viewsonic.com](mailto:salesinfo@viewsonic.com)