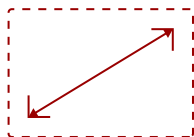
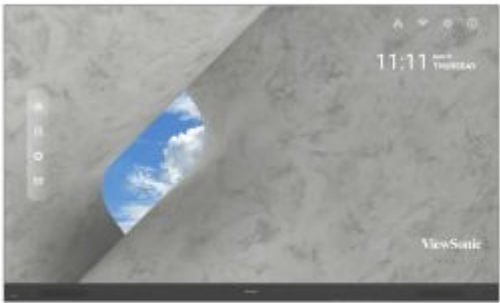




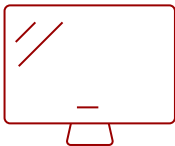
LDP163-181 - 163" DISPLAY, 1920 X 1080 RESOLUTION, 600-NIT BRIGHTNESS

Key Features

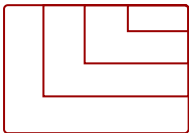
- Seamlessly Immersive
- Expandable and Flexible
- Amazing Visuals
- Theater-Level Audio
- Enhanced Durability and Reliability



163
DISPLAY



PANEL



1920x1080
RESOLUTION



Product Description

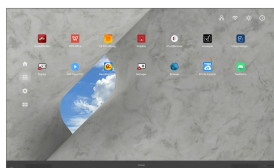
The ViewSonic® LDP163-181 All-in-One Direct View LED Display is a premium 163” larger-than-life digital screen that delivers an incredible audio-visual experience for any high-end corporate lobby, boardroom or conference room. Featuring a 120% Rec. 709 wide color gamut, lightning-fast 4,440Hz refresh rate, and a peak brightness of 600 nits, this display delivers true-to-life color and extraordinary detail for every video, presentation and lecture. The display is also equipped with Harman Kardon speakers, 4K/HDR/HLG support and PIP/PBP display modes for immersive content delivery. At 25mm slim and lined with a 5mm frameless edge, the sleek LDP163-181 exudes sophistication and elegance in any modern setting.

Specifications

More Information	
UPC	766907014969
Display Type	Direct View LED
Screen Size	163

Viewable Area (in.)	163
Orientation	Landscape / Portrait
Light Source	Fine Pixel Pitch LED
LED Pitch Size (mm)	1.88
LED Grayscale	14 bits
Display Resolution	1920 x 1080
Refresh Rate	4,440Hz
Aspect Ratio	16:9
Static Contrast Ratio	6,000:1
Backlight Life (Hours)	100,000
Brightness	600-nit
Viewing Angles	160° horizontal, 160° vertical
Wifi	2.4G / 5G n
OS	Android 9.0
Media Player Type	Yes
CPU	MTK9669
Memory	4GB DDR4
Storage	64GB (56GB available)
Internal Speakers	20W (x2)
PC Resolution (max)	1920x1080
Mac® Resolution (max)	1920x1080
HDMI 1.4 In	2
HDMI 2.0 In	3
HDMI 2.1 In	1
HDMI Out	1
HDMI 2.0 Out	1
3.5mm Audio Out	1
USB 2.0	3
RS232	1
Ethernet LAN (RJ45)	1
IR in	1
Intel® OPS Slot In (80-pin)	1
Voltage	100-240V+/- 10%, (100-120V/30A, 50/60Hz ; 220-240V/15A)
Consumption (max)	2660W
Consumption (typical)	1860W
Stand-by	<0.5W

On Screen Display	Yes
Remote Control	Yes
Temperature	32-104º F (0 - 40º C)
Humidity (non-condensing)	20-80%
Net (lbs)	375
Gross (lbs)	613
Net (kg)	170
Gross (kg)	278
Packaging (in.)	82.7 x 27.95 x 29.8
Physical (in.)	142.5 x 84.5 x 1
Physical with Wall Mount (in.)	142.5 x 84.5 x 2.2
Packaging (mm)	2100 x 710 x 760
Physical (mm)	3610 x 2145.3 x 25
Physical with Wall Mount (mm)	3610 x 2145.3 x 57
Warranty	3-year limited warranty on parts and labor, on-site service
Recycle/Disposal	Please dispose of in accordance with local, state or federal laws.
Package Contents	Power Cord: x1, LAN Cable (Cat 5A): x1(5m), IR Extender Cable: x1(3m), Remote Control: x1, QSG: x1, Wall Mount: x1, Spare Parts: LED PCB Unit x7, Maintenance Tool: LD-MK-001 x1
Regulations	cTUVus, FCC, RoHS
UPC: 766907014969	



Contact Sales

[ViewSonic.com](https://www.viewsonic.com)

888.881.8781

email:

salesinfo@viewsonic.com