

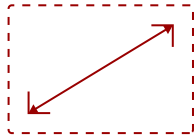


## LS610WH - 4000 ANSI LUMENS WXGA LED PROJECTOR WITH H/V KEYSTONE, 4 CORNER ADJUSTMENT

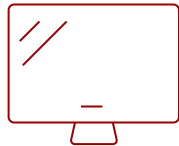
### Key Features

---

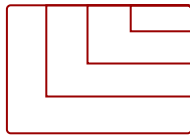
- High brightness 4000 Lumens WXGA LED projector with advanced visual features
- Latest LED technology provides an extended lifespan of up to 30,000 hours
- 1.2x optical zoom, 4 corner adjustment, and a 40-degree H/V keystone and 360 degree projection
- This projector can be configured to automatically turn on and off
- Schedule, and manage the projector remotely with Crestron, AMX, Extron, PJ Link, ATEN, and ViewSonic's vController
- Supports most media players, PCs, Macs, and mobile devices with inputs such as HDMI, USB, Ethernet LAN



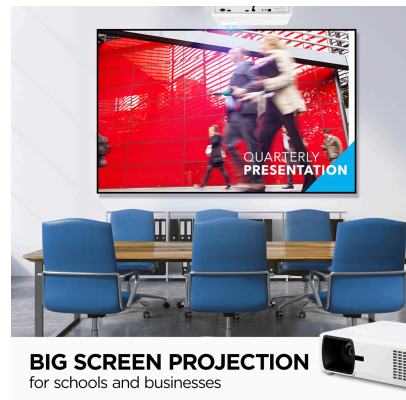
30 - 300 in. / 0.76 - 7.62 m  
**DISPLAY**



**PANEL**



1920 x 1080  
**RESOLUTION**



**BIG SCREEN PROJECTION**  
for schools and businesses

### Product Description

---

Featuring 1280x800 WXGA resolution and 4,000 ANSI lumens of brightness, the ViewSonic® LS610WH is a lamp-free LED projector ideal for business and education. With 3rd generation LED technology, the LS610WH eliminates the need to continuously swap out bulbs and dispose of toxic chemicals. In addition, an IP5X sealed optical engine prevents dust and moisture from entering the projector, ensuring impeccable image quality and a long maintenance-free lifespan of up to 30,000 hours.\* An automatic on/off feature delivers efficiency and power savings, while 360° tilt angle projection delivers flexible setup in small- to medium-sized meeting rooms and classrooms. Whether for business or education, the ViewSonic LS610WH LED projector provides a picture-perfect presentation every time.

\*Lightsource lifespan may vary based on actual usage and other factors.

# Specifications

	More Information
UPC	766907018141
Light Source	DLP LED
Display Resolution	WXGA (1280x800)
Display Resolution	1280 x 800
Brightness (Lumens)	4,000 ANSI
Screen Size	30 - 300 in. / 0.76 - 7.62 m
Throw Distance	0.88m-10.59m (100"@2.95m)
Throw Ratio	1.37-1.64
Keystone	Vertical (+/- 40º) / Horizontal (+/- 40º)
Lens	1.2x optical zoom
Light Source (watt)	RGBB LED
Light Source Life, Normal (hours)	30000
Color Depth	1.07 Billion Colors
Dynamic Contrast Ratio	3,000,000:1
Aspect Ratio	16:10
Input Lag	37ms
Frequency Horizontal	15K~102KHz
Frequency Vertical	23-120Hz
PC Resolution (max)	1920 x 1080
Mac® Resolution (max)	1920 x 1080
USB 2.0 Type A	1
Ethernet LAN (RJ45)	1
3.5mm Audio Out	1
3.5mm Audio In	1
Control (RS232)	1
HDMI 1.4 (with HDCP 1.4)	2
Internal Speakers	10W (x1)
Voltage	100-240V+/- 10%, 50/60Hz AC
Consumption (typical)	310W
Stand-by	<0.5W
Physical Controls	Keypad, Power key
On Screen Display	Display, Image, Power Management, Basic, Advanced, System, Information (See user guide for full OSD functionality)

<b>Temperature</b>	32-104º F (0 - 40º C)
<b>Kensington Lock Slot</b>	1
<b>Net (lbs)</b>	11.0
<b>Gross (lbs)</b>	15.4
<b>Net (kg)</b>	5.0
<b>Gross (kg)</b>	7.0
<b>Packaging (in.)</b>	19.3 x 14.8 x 10.6
<b>Physical (in.)</b>	15.2 x 10.9 x 4.6
<b>Packaging (mm)</b>	490 x 376 x 268.0
<b>Physical (mm)</b>	386.0 x 276.0 x 116.0
<b>Regulations</b>	cTUVus
<b>Package Contents</b>	LS610WH projector, power cable, remote control, Quick Start Guide
<b>Warranty</b>	Three-year limited warranty on parts and labor, 1-year limited warranty on the light source, 1st year free Express Exchange® service. (One year Express Exchange Service requires product registration).
<b>Recycle/Disposal</b>	Please dispose of in accordance with local, state or federal laws.

UPC: 766907018141



**Contact Sales**  
**[ViewSonic.com](http://ViewSonic.com)**  
888.881.8781  
email:  
[salesinfo@viewsonic.com](mailto:salesinfo@viewsonic.com)