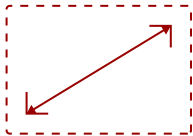


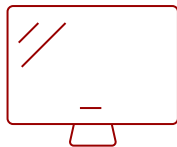
IFP6552-1C - 65" 4K TOUCH ENABLED VIEWBOARD SMART DISPLAY

Key Features

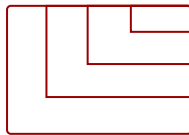
- **ULTRA HD RESOLUTION:** 43 Inch 4K Ultra HD (3840x2160p) Display
- **ADVANCED TOUCH:** 33-point Multi-touch lets users write or draw on the panel with their fingers and styluses
- **MEANINGFUL COLLABORATION:** Incredible capabilities for conference rooms, classrooms, and hybrid environments
- **FLEXIBLE CONNECTIVITY:** Powerful quad-core processor and versatile connectivity options (HDMI, VGA, RJ45, and USB-C ports)
- **INTEGRATED SOFTWARE:** The myViewBoard suite includes Whiteboard, ViewBoard Cast, and more for better engagement
- **REMOTE MANAGEMENT:** Schedule updates and monitor device status with the built-in myViewBoard® Manager software
- **PEACE OF MIND:** Industry-leading 3-year standard warranty with optional extensions and robust support services
- Upgradable to Android 11



65
DISPLAY



PANEL



RESOLUTION



Product Description

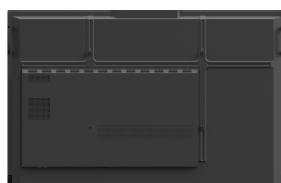
The ViewSonic® ViewBoard® IFP6552-1C is a 65" interactive flat panel display with next-generation whiteboard technologies for immersive learning in any classroom environment. With a high-accuracy touchscreen and intelligent palm recognition technology, the IFP6552-1C delivers an intuitive digital whiteboard experience for everyone from the youngest of students to the most experienced teachers. Featuring 4K Ultra HD resolution, a powerful 45W stereo soundbar with a built-in subwoofer, and microphone array, this ViewBoard display delivers optimal images and sound for everyone in the classroom as well those learning remotely. With the integrated myViewBoard™ software ecosystem, this ViewBoard display enables teachers to access legacy files from the cloud, as well as build new interactive lessons. IT directors will be confident managing files from a secure cloud network, while curriculum directors will be pleased knowing that this software easily integrates with online resources.

Specifications

| | |
|------------------------------------|--|
| UPC | 766907013887 |
| Display Type | LCD |
| Screen Size | 65 |
| Viewable Area (in.) | 64.5 |
| Light Source | LED |
| Display Resolution | 3840 x 2160 |
| Refresh Rate | 60Hz |
| Aspect Ratio | 16:9 |
| Static Contrast Ratio | 1,200:1 |
| Dynamic Contrast Ratio | 4,000:1 |
| Backlight Life (Hours) | 50,000 |
| Brightness | 350 cd/m2 |
| Response Time (Typical GTG) | 8ms |
| Viewing Angles | 178º horizontal, 178º vertical |
| Panel Surface | Anti-glare 7H tempered glass 3.2mm |
| Ethernet LAN | (10/100/1000M) (USB Type-C 10/100, Android & PC 10/100/1000) |
| Wifi | Optional VB-WIFI-001 adapter, 802.11AX + Bluetooth 5.2 |
| OS | ViewBoard OS based on Android 9.0 (Upgradable to Android 11) |
| GPU | ARM Mali-G52 |
| CPU | ARM Quad Core A73 |
| CPU Processor Speed | 1.8GHz |
| Memory | 4GB LPDDR4 |
| Storage | 32GB eMMC |
| Microphone | Beamforming array x 8, noise cancelation |
| Internal Speakers | 15W (x2) |
| Subwoofer | 15W (x1) |
| HDMI 2.0 In | 4 |
| HDMI Out | 1 |
| VGA | 1 |
| DisplayPort | 1 |
| SPDIF | 1 |
| USB 2.0 | 5 |
| USB 2.0 Type B | 2 |
| USB 3.1 Type C | 1 |
| OPS PC Slot | 1 |
| RS232 | 1 |

| | |
|------------------------------------|--|
| Ethernet LAN (RJ45) | 2 |
| Intel® OPS Slot In (80-pin) | 1 |
| Voltage | 100-240 VAC |
| Consumption (typical) | 233.5W |
| Stand-by | <0.5W |
| Temperature | 32-104° F (0 - 40° C) |
| Humidity (non-condensing) | 10-90% |
| Touch Technology | Infrared |
| Touch Points | Windows: 33, Android: 20 |
| Tip Detection | Dual tips, 2mm and 9mm |
| Other | Palm recognition, object awareness |
| Net (lbs) | 93.4 |
| Gross (lbs) | 114.9 |
| Net (kg) | 42.4 |
| Gross (kg) | 52.7 |
| Packaging (in.) | 63.7 x 41 x 8.7 |
| Physical (in.) | 58.6 x 37.3 x 4.7 |
| Packaging (mm) | 1620.0 x 1043.0 x 220.0 |
| Physical (mm) | 1488.0 x 948.0 x 120.0 |
| VESA Compatible | 600 x 400 mm |
| Screw Size | M8 |
| Warranty | 3-year limited warranty on parts, labor and backlight, onsite warranty |
| Recycle/Disposal | Please dispose of in accordance with local, state or federal laws. |
| Package Contents | IFP6552-1C display, stylus pen x 2, eraser, power cable, HDMI cable, USB cable, AV cable, remote control with batteries, Camera plate, M8 screw x 8, Quick Start Guide |
| Regulations | cTUVus, FCC, ENERGY STAR, EPEAT Silver, Mexico Energy, CE, CB, RoHS, ErP, WEEE |

UPC: 766907013887



Contact Sales

[ViewSonic.com](https://www.viewsonic.com)

888.881.8781

email:

salesinfo@viewsonic.com