



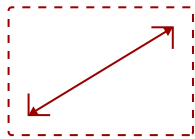
VG2448-PF - 24" 1080P ERGONOMIC IPS MONITOR WITH BUILT-IN PRIVACY FILTER, HDMI, AND DP

Key Features

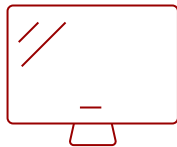
- 24 Inch Full HD (1920x1080p) IPS monitor with 60Hz refresh rate
- Built-in privacy filter keeps sensitive data on your screen from being visually compromised
- Advanced ergonomics (40-degree tilt, swivel, rotate and height) for all-day comfort
- Flicker-Free technology and Blue Light Filter for reduced eye fatigue
- Easy-to-install quick release stand with carrying handle and client mount
- The VG2448-PF supports laptops, PCs, Macs and more with HDMI, USB, DisplayPort, VGA inputs



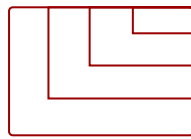
Future Proof inputs for flexible connectivity options



**24
DISPLAY**



**IPS
PANEL**



**1920 x 1080
RESOLUTION**



Product Description

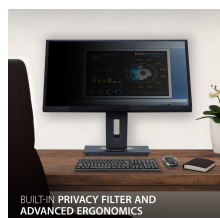
Protecting confidential information from unauthorized viewing is crucial for businesses, government institutions, and consumers alike. The ViewSonic VG2448-PF is a 24" (23.8" viewable) monitor with a built-in privacy filter that keeps sensitive and confidential data on the screen from being visually compromised. The VG2448-PF maintains a clear view directly in front of the screen, while blocking visibility when the screen is viewed from a side angle. For enhanced productivity, an advanced ergonomic design offers a wide range of customizable adjustments for maximum comfort including pivot, swivel, height adjustment, and 40° tilt. Versatile connectivity options include HDMI, DisplayPort, VGA, and USB. This monitor is also shipped in eco-friendly biodegradable packaging, along with an easy-to-install quick release stand that makes for simple out-of-the box setup. With the built-in privacy filter and comfortable ergonomics, the VG2448-PF is an ideal solution for use in medical, financial, or other facilities that require data security.

Specifications

	More Information
UPC	766907004335
Screen Size	24
Viewable Area (in.)	23.8
Panel Type	IPS
Display Resolution	1920 x 1080
Display Resolution	Full HD (1920x1080)
Static Contrast Ratio	1,000:1
Dynamic Contrast Ratio	50,000,000:1
Light Source	WLED
Brightness	250 cd/m2
Colors	16.7M
Color Space Support	6 bits
Aspect Ratio	16:9
Response Time (Typical GTG)	14ms
Response Time (GTG w/OD)	5ms
Viewing Angles	60º horizontal, 178º vertical
Backlight Life (Hours)	30,000
Panel Surface	3H Anti-glare, hard-coating
PC Resolution (max)	1920 x 1080
Mac® Resolution (max)	1920 x 1080
USB Type A	4
USB Type B	1
VGA	1
HDMI 1.4 In	1
DisplayPort	1
Internal Speakers	2W (x2)
Eco Mode (Conserve)	14.6W
Eco Mode (optimized)	17.4W
Consumption (typical)	25W
Consumption (max)	57W
Voltage	AC 100-240V (universal), 50-60Hz
Stand-by	0.5W
Power Supply	Internal

Cable Organization	No
Kensington Lock Slot	1
Physical Controls	1,2,3,4,5, 6 (power)
On Screen Display	Auto Image Adjust, Contrast/Brightness, Input Select, Audio Adjust, Color Adjust, Information, Manual Image Adjust, Advanced Image Adjust, Setup Menu, Memory Recall (See user guide for complete OSD functionality)
Temperature	32-104º F (0 - 40º C)
Humidity (non-condensing)	20-90%
VESA Compatible	100 x 100 mm
Frequency Horizontal	24 ~ 82KHz
Frequency Vertical	50 ~ 75Hz
Digital Sync	TMDS for HDMI 1.4, PCI-E for DisplayPort
Height Adjust	130 mm / 5.1 in
Swivel	120º
Pivot (Right/Left)	90º / 90º
Tilt (Forward/Back)	40º / 5º
Net (lbs)	13.0
Net Without Stand (lbs)	7.7
Gross (lbs)	19.4
Net (kg)	5.9
Net Without Stand (kg)	3.5
Gross (kg)	8.8
Packaging (in.)	23.8 x 15.2 x 8.3
Physical (in.)	21.7 x 15.2 x 8.0
Physical Without Stand (in.)	21.7 x 12.8 x 2.0
Packaging (mm)	604.0 x 385.0 x 210.0
Physical (mm)	549.4 x 387.0 x 202.2
Physical Without Stand (mm)	549.4 x 325.6 x 50.0
Regulations	cTUVus, FCC-B, ICES003, Energy Star Certified, EPEAT Certified, CEC, S-mark, MX-CoC, Mexico Energy
Package Contents	VG2448-PF Display, Power Cable, DP to DP Cable, USB 3.0 Upstream Cable, Quick Start Guide
Recycle/Disposal	Please dispose of in accordance with local, state or federal laws.

UPC: 766907004335



Contact Sales
ViewSonic.com
888.881.8781
email: salesinfo@viewsonic.com