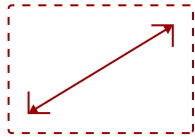


# LS832WU - 5000 ANSI LUMENS WUXGA ULTRA SHORT THROW LASER INSTALLATION PROJECTOR

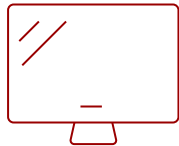
## Key Features

---

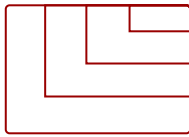
- High brightness 5000 Lumens WUXGA laser projector with 0.25 ultra short throw and advanced visual features
- Long-lasting laser phosphor light source allows the lamp to shine bright for up to 30,000 hours
- 0.25 ultra short throw ratio, HV keystone, 4 corner adjustments and 360 degree projection
- Schedule, and manage the projector remotely with Crestron, AMX, Extron, PJ Link, ATEN, and ViewSonic's vController
- Supports most media players, PCs, Macs, and mobile devices with inputs such as HDMI, USB and Ethernet LAN



87 - 120 in. / 2.21 - 3.05 m  
**DISPLAY**



**PANEL**



3840 x 2160  
**RESOLUTION**



**ULTRA SHORT THROW**  
Laser projector

## Product Description

---

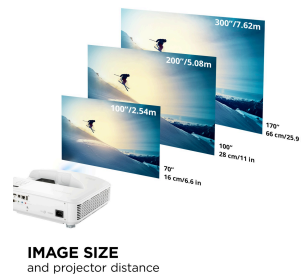
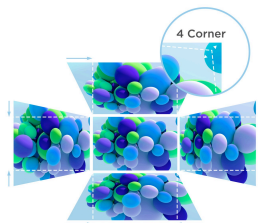
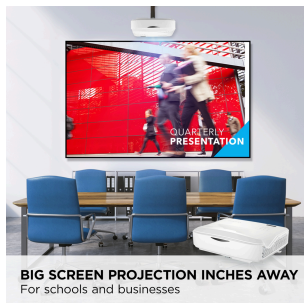
The ViewSonic® ultra-short throw LS832WU projector is the ultimate digital signage solution for public and commercial spaces such as auditoriums, museums, storefronts, shopping malls and airports. Featuring laser phosphor technology, the LS832WU projector delivers 5,000 ANSI lumens of brightness to ensure crisp images even in spaces with ambient lighting. Enjoy a maintenance-free projection experience without having to deal with complicated lamp replacements. An ultra-short throw ratio enables this projector to create 100" images from just 11" away. Enjoy screen sizes up to 170" at a lower cost-per-inch compared to commercial displays. The LS832WU laser projector comes loaded with features like H/V keystone, automated four corner adjustment and flexible installation options. Enjoy comprehensive LAN control for centralized management and compatibility with Crestron, AMX, Extron and PJ Link AV control systems.

# Specifications

	More Information
<b>UPC</b>	766907021912
<b>Light Source</b>	Laser
<b>Display Resolution</b>	WUXGA (1920x1200)
<b>Display Resolution</b>	1920 x 1200
<b>Brightness (Lumens)</b>	5,000 ANSI
<b>Screen Size</b>	87 - 120 in. / 2.21 - 3.05 m
<b>Throw Distance</b>	0.17-0.66m (100"@0.28m)
<b>Throw Ratio</b>	0.253
<b>Keystone</b>	Vertical (+/- 10°) / Horizontal (+/- 10°)
<b>Lens</b>	Fixed Zoom
<b>Light Source (watt)</b>	Laser
<b>Light Source Life, Normal (hours)</b>	20000
<b>Light Source Life, Dynamic Eco-Mode (hours)</b>	30000
<b>Color Depth</b>	1.07 Billion Colors
<b>Dynamic Contrast Ratio</b>	3,000,000:1
<b>Aspect Ratio</b>	16:10
<b>Input Lag</b>	37ms
<b>Frequency Horizontal</b>	15K- 91KHz
<b>Frequency Vertical</b>	24- 85Hz
<b>PC Resolution (max)</b>	3840 x 2160
<b>PC Resolution (min)</b>	640 x 480
<b>Mac® Resolution (max)</b>	3840 x 2160
<b>Mac® Resolution (min)</b>	640 x 480
<b>USB 2.0 Type A</b>	1
<b>USB 2.0 Type B</b>	1
<b>Ethernet LAN (RJ45)</b>	1
<b>3.5mm Audio Out</b>	1
<b>3.5mm Audio In</b>	1
<b>3.5mm Mic In</b>	1
<b>Control (RS232)</b>	1
<b>HDMI 2.0 (with HDCP 2.2)</b>	2
<b>VGA In</b>	1
<b>VGA Out</b>	1

<b>Internal Speakers</b>	10W (x1)
<b>Voltage</b>	100-240V+/- 10%, 50/60Hz AC
<b>Consumption (typical)</b>	328W
<b>Stand-by</b>	<0.5W
<b>Physical Controls</b>	Keypad, Power key
<b>On Screen Display</b>	Display, Image, Power Management, Basic, Advanced, System, Information (See user guide for full OSD functionality)
<b>Temperature</b>	32-104° F (0 - 40° C)
<b>Kensington Lock Slot</b>	1
<b>Net (lbs)</b>	12.8
<b>Gross (lbs)</b>	17.9
<b>Net (kg)</b>	5.8
<b>Gross (kg)</b>	8.1
<b>Packaging (in.)</b>	20.4 x 16.5 x 12.3
<b>Physical (in.)</b>	15.0 x 12.5 x 5.2
<b>Packaging (mm)</b>	518.0 x 420.0 x 313.0
<b>Physical (mm)</b>	382.0 x 318.0 x 132.0
<b>Regulations</b>	cTUVus
<b>Package Contents</b>	LS832WU projector, power cable, remote control, Quick Start Guide
<b>Warranty</b>	Three-year limited warranty on parts and labor, 1st year free Express Exchange® service. (One year Express Exchange Service requires product registration).
<b>Recycle/Disposal</b>	Please dispose of in accordance with local, state or federal laws.

UPC: 766907021912



**Contact Sales**  
[ViewSonic.com](http://ViewSonic.com)  
888.881.8781  
email:  
[salesinfo@viewsonic.com](mailto:salesinfo@viewsonic.com)