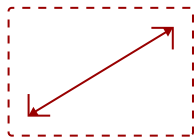


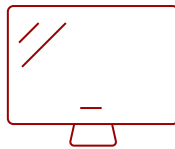
## IFP7552-1C-E4 - 75" VIEWBOARD® INTERACTIVE DISPLAY BUNDLE

### Key Features

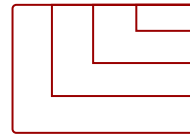
- **ULTRA HD RESOLUTION:** 75 Inch 4K Ultra HD (3840x2160p) Display
- **ADVANCED TOUCH:** 33-point Multi-touch lets users write or draw on the panel with their fingers and styluses
- **MEANINGFUL COLLABORATION:** Incredible capabilities for conference rooms, classrooms, and hybrid environments
- **FLEXIBLE CONNECTIVITY:** Powerful quad-core processor and versatile connectivity options (HDMI,VGA, RJ45, and USB-C ports)
- **INTEGRATED SOFTWARE:** The myViewBoard suite includes Whiteboard, ViewBoard Cast, and more for better engagement
- **EVERYTHING TO GET STARTED:** This bundle includes the interactive display, wireless AC adapter and slim mobile cart
- **REMOTE MANAGEMENT:** Schedule updates and monitor device status with the built-in myViewBoard® Manager software
- **PEACE OF MIND:** Industry-leading 3-year standard warranty with optional extensions and robust support services



75  
DISPLAY



PANEL



RESOLUTION

### Product Description

Ideal for education environments, this all-in-one ViewBoard Bundle includes a 75" ViewBoard IFP7552-1C 4K interactive display

### Specifications

More Information	
<b>OS</b>	ViewBoard OS based on Android 9.0
<b>GPU</b>	ARM Mali-G52
<b>CPU</b>	ARM Quad Core A73
<b>CPU Processor Speed</b>	1.8GHz
<b>Memory</b>	4GB

<b>Storage</b>	32GB eMMC
<b>Internal Speakers</b>	15W (x2)
<b>Subwoofer</b>	15W (x1)
<b>HDMI 2.0 In</b>	4
<b>HDMI Out</b>	1
<b>VGA</b>	1
<b>DisplayPort</b>	1
<b>3.5mm Audio In</b>	1
<b>3.5mm Audio Out</b>	1
<b>SPDIF</b>	1
<b>USB 3.0</b>	3
<b>USB 2.0</b>	2
<b>USB 2.0 Type B</b>	3
<b>USB 3.1 Type C</b>	1
<b>Slot-in PC Slot</b>	1
<b>RS232</b>	1
<b>Ethernet LAN (RJ45)</b>	2
<b>WIFI Module Slot</b>	1
<b>Intel® OPS Slot In (80-pin)</b>	1
<b>Voltage</b>	100-240 VAC
<b>Consumption (typical)</b>	233.5W
<b>Stand-by</b>	<0.5W
<b>Physical Controls</b>	OSD / Remote Control / Annotation overlay
<b>On Screen Display</b>	Input, Volume, Backlight, Audio, Screen, Display, Adjust
<b>Temperature</b>	32-104° F (0 - 40° C)
<b>Humidity (non-condensing)</b>	10-90%
<b>Touch Technology</b>	Infrared
<b>Touch Points</b>	Windows: 33, Android: 20
<b>Tip Detection</b>	Dual tips, 2.5mm and 9mm
<b>Net (lbs)</b>	121.81
<b>Gross (lbs)</b>	170.81
<b>Net (kg)</b>	55.25
<b>Gross (kg)</b>	77.48
<b>Packaging (in.)</b>	73.2 x 46.3 x 8.9
<b>Physical (in.)</b>	67.3 x 42.2 x 4.7
<b>Packaging (mm)</b>	1860 x 1175 x 225

<b>Physical (mm)</b>	1709 x 1071 x 120
<b>VESA Compatible</b>	800 x 400 mm
<b>Warranty</b>	3-year limited warranty on parts, labor and backlight, onsite warranty
<b>Recycle/Disposal</b>	Please dispose of in accordance with local, state or federal laws.
<b>Package Contents</b>	IFP7552-1C display, power cord, Remote control with AAA battery, Touch USB cable, Touch pen x 2, Quick Start Guide + Compliance statement, RS232 adapter, Clamp x 5, Camera Plate, Screw x 8, HDMI cable, Type-C cable, Eraser
<b>Regulations</b>	cTUVus, FCC, ENERGY STAR 7.0, Mexico Energy, CE, CB, RoHS, ErP, WEEE
<b>Ethernet LAN</b>	(10/100/1000M) (USB Type-C 10/100, Android & PC 10/100/1000)
<b>Wifi</b>	Optional VB-WIFI-001 adapter, 802.11AX + Bluetooth 5.2
<b>Display Type</b>	LCD
<b>Screen Size</b>	75
<b>Viewable Area (in.)</b>	75
<b>Light Source</b>	LED
<b>Display Resolution</b>	3840 x 2160
<b>Refresh Rate</b>	60Hz
<b>Aspect Ratio</b>	16:9
<b>Static Contrast Ratio</b>	1,200:1
<b>Dynamic Contrast Ratio</b>	4,000:1
<b>Backlight Life (Hours)</b>	50,000
<b>Brightness</b>	350 cd/m2
<b>Response Time (Typical GTG)</b>	8ms
<b>Viewing Angles</b>	178° horizontal, 178° vertical
<b>Panel Surface</b>	Anti-glare 7H tempered glass

## Contact Sales

[ViewSonic.com](http://ViewSonic.com)

888.881.8781 ☎

email: [salesinfo@viewsonic.com](mailto:salesinfo@viewsonic.com) ✉