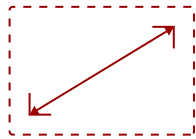


## LS510WH-2 - 3,000 ANSI LUMENS WXGA LED BUSINESS/EDUCATION PROJECTOR

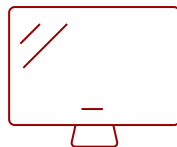
### Key Features

---

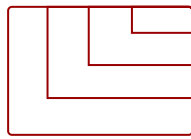
- Bright 3000 Lumens WXGA LED projector with advanced visual features
- Latest LED technology provides an extended lifespan of up to 30,000 hours
- 1.1x optical zoom, 40-degree vertical keystone and 360 degree projection
- This projector can be configured to automatically turn on and off
- Supports most media players, PCs, Macs, and mobile devices with inputs such as HDMI, USB, Ethernet LAN



30 - 300 in. / 0.76 - 7.62 m  
**DISPLAY**



**PANEL**



VGA(640 x 480) to Full HD(1920 x 1080)  
**RESOLUTION**



### Product Description

---

The eco-friendly ViewSonic LS510WH-2 WXGA projector uses the latest LED technology for a brighter, more vivid display. With 3,000 ANSI lumens and no need for complicated lamp replacements, the LS510WH serves as a cost-effective presentation solution for both education and enterprise organizations. Experience stunning images with breathtaking colors for boardrooms, lecture halls and other public spaces on a long-lasting projection solution equipped with 125% Rec. 709 technology. Enjoy convenient features like instant power on/off, streamlined software updates and flexible setup.

### Specifications

---

More Information

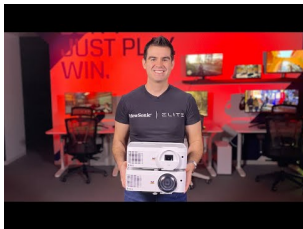
UPC

766907018097

<b>Light Source</b>	LED
<b>Display Resolution</b>	WXGA (1280x800)
<b>Display Resolution</b>	1280 x 800
<b>Brightness (Lumens)</b>	3,000 ANSI
<b>Screen Size</b>	30 - 300 in. / 0.76 - 7.62 m
<b>Throw Distance</b>	1m-10.98m (100""@3.34m)
<b>Throw Ratio</b>	1.3-1.56
<b>Keystone</b>	Vertical (+/- 40°)
<b>Lens</b>	1.1x optical zoom
<b>Light Source Life, Normal (hours)</b>	30000
<b>Color Depth</b>	1.07 Billion Colors
<b>Dynamic Contrast Ratio</b>	3,000,000:1
<b>Aspect Ratio</b>	16:10
<b>Input Lag</b>	37ms
<b>Frequency Horizontal</b>	15K~102KHz
<b>Frequency Vertical</b>	23-120Hz
<b>PC Resolution (max)</b>	VGA(640 x 480) to Full HD(1920 x 1080)
<b>Mac® Resolution (max)</b>	480i, 480p, 576i, 576p, 720p, 1080i, 1080p
<b>USB 2.0 Type A</b>	1
<b>Ethernet LAN (RJ45)</b>	1
<b>3.5mm Audio Out</b>	1
<b>3.5mm Audio In</b>	1
<b>Control (RS232)</b>	1
<b>HDMI 1.4 (with HDCP 1.4)</b>	1
<b>Internal Speakers</b>	2W (x1)
<b>Voltage</b>	100-120V+/- 10%, 50/60Hz
<b>Consumption (typical)</b>	240W
<b>Stand-by</b>	<0.5W
<b>Physical Controls</b>	Keypad, Power key
<b>On Screen Display</b>	Display, Image, Power Management, Basic, Advanced, System, Information (See user guide for full OSD functionality)
<b>Temperature</b>	32-104° F (0 - 40° C)
<b>Kensington Lock Slot</b>	1
<b>Net (lbs)</b>	5.8
<b>Gross (lbs)</b>	8.3
<b>Net (kg)</b>	2.65

<b>Gross (kg)</b>	3.75
<b>Packaging (in.)</b>	11.5 x 8.7 x 4.5
<b>Physical (in.)</b>	15.2 x 11.8 x 7.4
<b>Packaging (mm)</b>	293 x 221 x 115
<b>Physical (mm)</b>	365 x 300 x 188
<b>Regulations</b>	cTUVus
<b>Package Contents</b>	Projector, power cable, remote control, Quick Start Guide
<b>Warranty</b>	Three-year limited warranty on parts and labor, 1-year limited warranty on the light source, 1st year free Express Exchange® service. (One year Express Exchange Service requires product registration).
<b>Recycle/Disposal</b>	Please dispose of in accordance with local, state or federal laws.

UPC: 766907018097



**Contact Sales**  
[ViewSonic.com](http://ViewSonic.com)  
 888.881.8781  
 email:  
[salesinfo@viewsonic.com](mailto:salesinfo@viewsonic.com)