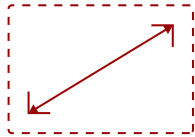


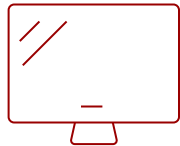
# LS921WU - 6000 LUMENS WUXGA SHORT THROW LASER PROJECTOR WITH PORTRAIT MODE AND DUAL HDMI

## Key Features

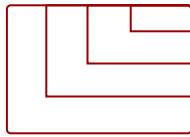
- High brightness 6000 Lumens WUXGA short throw laser projector with advanced visual features
- Long-lasting laser phosphor light source allows the lamp to shine bright for up to 20,000 hours
- 1.1x optical zoom, H/V keystone, wide lens shift and 360 degree projection
- Schedule, and manage the projector remotely with Crestron, AMX, Extron, PJ Link, ATEN, and ViewSonic's vController
- Supports most media players, PCs, Macs, and mobile devices with inputs such as dual HDMI, USB, integrated HDBT, RJ45



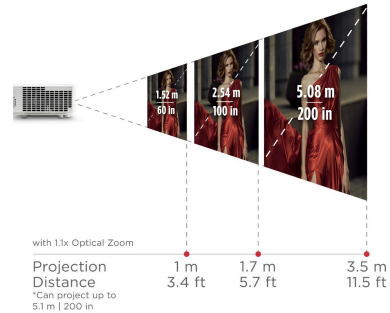
30 - 300 in. / 0.76 - 7.62 m  
**DISPLAY**



**PANEL**



3840 x 2160  
**RESOLUTION**



**GO BIG EVEN IN SMALL SPACES**

## Product Description

Bright and versatile for any professional installation, the ViewSonic® LS921WU WUXGA short throw laser projector delivers everything you need for big screens in big venues. Delivering 6,000 ANSI lumens of advanced high brightness, up to 20,000 hours\* of light source life, and a screen size of up to 200", this projector is ideal for auditoriums, restaurants, gyms and other large venues. This top-notch performer is also easy to deploy and manage with its short-throw lens, 1.1x optical zoom adjustment, wide lens shift, 360° projection, and portrait mode that provide extreme flexibility in even the most challenging installations. Dual HDMI 2.0b / HDCP 2.2 ports ensure access to original 4K quality content with HDR/HLG support. In addition, its compact size and built-in HDBaseT deliver the perfect mix of high-quality projection and cost-effectiveness. \*Light source life may vary based on actual usage and other factors.

# Specifications

	More Information
<b>UPC</b>	766907008739
<b>Light Source</b>	Laser
<b>Display Resolution</b>	WUXGA (1920x1200)
<b>Display Resolution</b>	1920 x 1200
<b>Brightness (Lumens)</b>	6,000 ANSI
<b>Screen Size</b>	30 - 300 in. / 0.76 - 7.62 m
<b>Throw Distance</b>	1.04-3.83m (100"@1.74m)
<b>Throw Ratio</b>	0.81-0.89
<b>Keystone</b>	Vertical (+/- 40°) / Horizontal (+/- 40°)
<b>Lens</b>	1.1x optical zoom
<b>Light Source (watt)</b>	Nichia 74W x 2
<b>Light Source Life, Normal (hours)</b>	20000
<b>Color Depth</b>	1.07 Billion Colors
<b>Dynamic Contrast Ratio</b>	3,000,000:1
<b>Aspect Ratio</b>	16:10
<b>Input Lag</b>	37ms
<b>Lens Shift</b>	Horizontal (50%, -50%) / Vertical (+23%, -23%)
<b>Frequency Horizontal</b>	15K~135KHz
<b>Frequency Vertical</b>	23-120Hz
<b>PC Resolution (max)</b>	3840 x 2160
<b>PC Resolution (min)</b>	640 x 480
<b>Mac® Resolution (max)</b>	3840 x 2160
<b>Mac® Resolution (min)</b>	640 x 480
<b>USB 2.0 Type A</b>	1
<b>Ethernet LAN (RJ45)</b>	1
<b>3.5mm 12V Trigger</b>	1
<b>3.5mm Audio Out</b>	1
<b>3.5mm Audio In</b>	1
<b>Control (RS232)</b>	1
<b>HDMI 2.0 (with HDCP 2.2)</b>	2
<b>VGA In</b>	1
<b>VGA Out</b>	1
<b>Composite RCA Video In</b>	1

<b>RCA Audio In (L/R)</b>	1
<b>3D VESA</b>	1
<b>HDBT</b>	1
<b>Internal Speakers</b>	10W (x2)
<b>Voltage</b>	100-120V+/- 10%, 50/60Hz
<b>Consumption (typical)</b>	450W
<b>Stand-by</b>	<0.5W
<b>Physical Controls</b>	Keypad, Power key
<b>On Screen Display</b>	Display, Image, Power Management, Basic, Advanced, System, Information (See user guide for full OSD functionality)
<b>Temperature</b>	32-104° F (0 - 40° C)
<b>Kensington Lock Slot</b>	1
<b>Net (lbs)</b>	14.3
<b>Gross (lbs)</b>	19.8
<b>Net (kg)</b>	6.5
<b>Gross (kg)</b>	9.0
<b>Packaging (in.)</b>	20.3 x 19.3 x 10.9
<b>Physical (in.)</b>	15.9 x 12.0 x 5.7
<b>Packaging (mm)</b>	515.0 x 490.0 x 276.0
<b>Physical (mm)</b>	405.0 x 305.0 x 145.0
<b>Regulations</b>	cTUVus
<b>Package Contents</b>	LS921WU projector, power cable, remote control, Quick Start Guide
<b>Warranty</b>	Five-year limited warranty on parts and labor, 1-year limited warranty on the light source, 1st year free Express Exchange® service. (One year Express Exchange Service requires product registration).
<b>Recycle/Disposal</b>	Please dispose of in accordance with local, state or federal laws.

UPC: 766907008739



**6,000 LUMENS  
AND WUXGA RESOLUTION**



**SHORT LENS NO SHADOWS  
NO BLINDING LIGHTS**



**INSTALLATION FLEXIBILITY  
WITH WIDE H/V LENS SHIFT**

**Contact Sales**  
[ViewSonic.com](http://ViewSonic.com)

888.881.8781  
email:  
[salesinfo@viewsonic.com](mailto:salesinfo@viewsonic.com)