

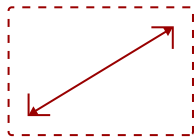
TD2455 - 24" 1080P IPS 10-POINT TOUCH MONITOR WITH DUAL-HINGE ERGONOMICS, USB C, HDMI, DP

Key Features

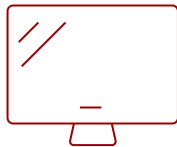
- 24 Inch Full HD (1920x1080p) IPS touch monitor with thin bezels and 60Hz refresh rate
- Robust 10-point Projected Capacitive (PCAP) technology provides a responsive experience with every tap, pinch, and swipe
- Ergonomic tiltable dual-hinge design maximizes comfort and productivity
- USB-C connectivity for fast data, audio and video transfer, and 60W charging over one cable



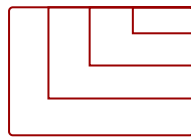
24-Inch Full HD (1920x1080p) Resolution



24
DISPLAY



IPS
PANEL



1920x1080
RESOLUTION



Product Description

With responsive, in-cell touch technology and an advanced ergonomic design, the ViewSonic® TD2455 touch display delivers hands-on control for more productive workspaces and collaborative classrooms. This 24" (23.8" viewable) Full HD display features a SuperClear® IPS panel and a three-sided ultra-thin bezel design that lets you see more and do more with incredible images and expansive screen real estate. An intuitive 10-point Projected Capacitive (PCAP) touch screen delivers a smooth and responsive experience with every tap, pinch, and swipe. Its advanced ergonomic design delivers versatility and comfort for office use, check-in applications, and more. With DisplayPort out connectivity, the TD2455 easily connects to a projector or interactive whiteboard, making it ideal for use as a podium touch display option in classrooms and lecture halls. An included stylus pen lets you write or draw on screen, and easily attaches to the magnetic base of the display stand for secure storage and quick access. So whether used on its own on office desktops, as a collaboration station in corporate huddle spaces, or as a front-of-classroom interactive teaching hub, the TD2455 helps to boost efficiency and productivity.

Specifications

	More Information
UPC	766907004960
Screen Size	24
Viewable Area (in.)	23.8
Panel Type	IPS
Display Resolution	1920 x 1080
Display Resolution	Full HD (1920x1080)
Static Contrast Ratio	1,000:1
Dynamic Contrast Ratio	50,000,000:1
Light Source	LED
Brightness	250 cd/m2
Colors	16.7M
Color Space Support	6 bit + Hi-FRC
Aspect Ratio	16:9
Response Time (Typical GTG)	14ms
Response Time (GTG w/OD)	6ms
Viewing Angles	178° horizontal, 178° vertical
Backlight Life (Hours)	30,000
Panel Surface	Anti-Glare type, Hard-coating (3H), Haze 25%
Refresh Rate	60Hz
PC Resolution (max)	1920x1080
Mac® Resolution (max)	1920x1080
USB Type A	2
USB Type B	1
USB Type C	60W x 1
HDMI 1.4 In	1
DisplayPort	1
DisplayPort Out	1
Touch Technology	Projective Capacitive
Touch Points	10-Point Touch
Touch Compatibility	Supports Windows 7/8/10, Linux Kernel Ubuntu 18.04/19.04, and Chromebox
Internal Speakers	2W (x2)
Eco Mode (Conserve)	11.3
Eco Mode (optimized)	14.5

Consumption (typical)	19.6
Consumption (max)	23.6
Voltage	AC 100-240V (universal), 50-60Hz
Stand-by	0.3W
Power Supply	Internal
Cable Organization	No
Kensington Lock Slot	1
Physical Controls	1,2,3,4,5,6 [Power]
On Screen Display	Auto image adjust, Contrast/Brightness, Input Select, Audio adjust, Color Adjust, Information, Manual Image Adjust, Setup Menu, Memory Recall
Temperature	32-104° F (0 - 40° C)
Humidity (non-condensing)	20-90%
VESA Compatible	100 x 100 mm
Frequency Horizontal	15 ~ 82KHz
Frequency Vertical	50 ~ 75Hz
Digital Sync	TMDS for HDMI (v1.4), Micro-Packet for DisplayPort (v1.2), and USB Type C
Tilt (Forward/Back)	5° / 60°
Net (lbs)	14.2
Net Without Stand (lbs)	8.2
Gross (lbs)	18.6
Net (kg)	6.4
Net Without Stand (kg)	3.7
Gross (kg)	8.4
Packaging (in.)	24.3 x 16.3 x 11.2
Physical (in.)	21.2 x 16.8 x 11.3
Physical Without Stand (in.)	21.2 x 12.6 x 2.0
Packaging (mm)	617.0 x 415.0 x 285.0
Physical (mm)	539.0 x 426.0 x 286.0
Physical Without Stand (mm)	539.0 x 320.0 x 52.0
Regulations	cTUVus, FCC-B, ICES003, Energy Star, EPEAT, CEC, MX-CoC, Mexico Energy
Package Contents	TD2455 Display, Power Cable, DP Cable, USB 3.2 Cable, Passive Touch Pen, Passive Touch Pen Head, Quick Start Guide
Recycle/Disposal	Please dispose of in accordance with local, state or federal laws.
Warranty	Three-year limited warranty on parts, labor and backlight

UPC: 766907004960



ADVANCED ERGONOMICS
DUAL-HINGE DESIGN

Contact Sales
ViewSonic.com
888.881.8781
email:
salesinfo@viewsonic.com