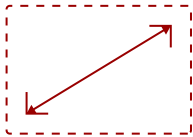


IFP7550-LA-V3

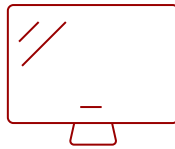
## Key Features

---

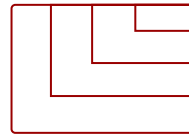
- Ultra HD Resolution
  - myViewboard™ Digital Whiteboarding Solution
  - ViewBoard Cast Content Sharing Software
- 



75  
DISPLAY



PANEL



RESOLUTION

## Product Description

---

ViewBoard IFP7550-LA-V3 dual OS includes a built-in Android OS and Windows 10 dual boot operation system for all the interactive needs.

## Specifications

---

### More Information


<b>OS</b>	Embedded ViewBoard OS
<b>GPU</b>	ARM Mali450 Quad Core
<b>CPU</b>	ARM Dual Core Cortex A73
<b>CPU Processor Speed</b>	1.2GHz
<b>Memory</b>	2GB
<b>Storage</b>	16GB
<b>Built-in Software</b>	myViewBoard, Chromium browser, Zoom, ViewBoard Cast
<b>Operating System</b>	Windows 10 Pro
<b>CPU</b>	Intel i5-8400 2.8GHz
<b>GPU</b>	Intel UHD Graphics 630
<b>Memory</b>	8GB DDR4
<b>Storage</b>	256GB SSD
<b>Ethernet</b>	10//100/1000
<b>WiFi</b>	802.11 a/b/g/n/ac

<b>Bluetooth</b>	4.0
<b>Connectors</b>	HDMIx1, DPx1, VGAx1, RJ45x1, Audio-inx1, Audio-outx1, USB2.0x2, USB3.0x4, Type-Cx1
<b>Internal Speakers</b>	10W (x2)
<b>Subwoofer</b>	15W (x1)
<b>HDMI 2.0 In</b>	3
<b>HDMI Out</b>	1
<b>VGA</b>	1
<b>Composite RCA</b>	1
<b>3.5mm Audio In</b>	1
<b>3.5mm Audio Out</b>	1
<b>SPDIF Audio Out</b>	1
<b>USB 3.0</b>	2
<b>USB 2.0</b>	4
<b>Slot-in PC Slot</b>	1
<b>USB B Touch Port</b>	2
<b>RS232</b>	1
<b>Ethernet LAN (RJ45)</b>	1
<b>WIFI Module Slot</b>	1
<b>Intel® OPS Slot In (80-pin)</b>	1
<b>Voltage</b>	100-240 VAC
<b>Consumption (max)</b>	350W
<b>Consumption (typical)</b>	138W
<b>Stand-by</b>	<0.5W
<b>On Screen Display</b>	Input, Volume, Backlight, Audio, Screen, Display, Adjust
<b>Remote Control</b>	Volume, Channel, Source, Mute, Back, Input, Menu
<b>Temperature</b>	32-104° F (0 - 40° C)
<b>Humidity (non-condensing)</b>	10-90%
<b>Touch Technology</b>	Infrared
<b>Touch Points</b>	Windows: 20, Android: 20
<b>Net (lbs)</b>	121.0
<b>Gross (lbs)</b>	148.6
<b>Net (kg)</b>	54.9
<b>Gross (kg)</b>	67.4
<b>Packaging (in.)</b>	76.0 x 44.9 x 11.0
<b>Physical (in.)</b>	67.3 x 40.2 x 3.5
<b>Packaging (mm)</b>	1930.0 x 1140.0 x 280.0

<b>Physical (mm)</b>	1710.0 x 1020.0 x 90.0
<b>VESA Compatible</b>	600 x 400 mm
<b>Warranty</b>	3-year limited warranty on parts, labor and backlight, onsite warranty
<b>Recycle/Disposal</b>	Please dispose of in accordance with local, state or federal laws.
<b>Package Contents</b>	IFP7550 display, VPC15-WP-4, stylus pen x 2, power cable, remote control with batteries, ViewSonic Wizard CD (User Guide), Quick Start Guide
<b>Regulations</b>	cTUVus, FCC, ENERGY STAR 7.0, Mexico Energy, CE, CB, RoHS, ErP, WEEE
<b>Ethernet LAN</b>	(10/100/1000M) (Android 10/100, PC 10/100/1000)
<b>Screen Size</b>	75
<b>Viewable Area (in.)</b>	75
<b>Light Source</b>	LED
<b>Display Resolution</b>	3840 x 2160
<b>Aspect Ratio</b>	16:9
<b>Static Contrast Ratio</b>	1,200:1
<b>Backlight Life (Hours)</b>	50,000
<b>Brightness</b>	350 cd/m2
<b>Response Time (Typical GTG)</b>	8ms
<b>Viewing Angles</b>	178° horizontal, 178° vertical
<b>Panel Surface</b>	Anti-glare 7H tempered glass
<b>Operation Rating</b>	16/7

## Contact Sales

[ViewSonic.com](http://ViewSonic.com)

888.881.8781 

email: [salesinfo@viewsonic.com](mailto:salesinfo@viewsonic.com) 