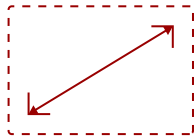


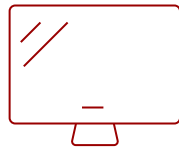
TD2210 - 22" 1080P SINGLE POINT RESISTIVE TOUCH MONITOR WITH USB, DVI AND VGA

Key Features

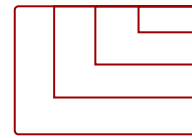
- 22 Inch Full HD (1920x1080p) LED touch monitor with 60Hz refresh rate
- Robust single-point resistive touch technology feature a robust, pressure-sensing touchscreen
- 20M:1 MEGA Dynamic Contrast Ratio delivers sharp, crisp images
- MacOS users can access touch and gesture controls on touch displays connected to their Apple devices using ViewSonic's vTouch driver. Not available for iPhone and iPad
- The TD2210 supports laptops, PCs, Macs and POS Systems with USB, DVI-I, and VGA inputs



22
DISPLAY



TN
PANEL



1920 x 1080
RESOLUTION



Product Description

The TD2210 is a 22" (21.5" viewable) Full HD monitor with resistive touch technology. With a robust, pressure-sensing touchscreen that is resistant to screen contamination, the TD2210 is ideal for use in retail, POS, and commercial environments. Resistive touch technology on the TD2210 is also fully functional in gloved environments and compatible with styluses. Featuring stunning Full HD resolution and 20M:1 MEGA Dynamic Contrast Ratio, the TD2210 delivers extremely sharp and crisp images. Flexible connectivity options include VGA, DVI, and USB ports, and a VESA-mountable design offers additional convenience for use as a wall-mounted display. Industry-leading warranty protection and ViewSonic product quality makes this durable touch display a great long-term investment for a variety of environments.

Specifications

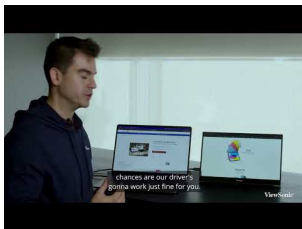
More Information

UPC	766907856217
Screen Size	22

Viewable Area (in.)	21.5
Display Resolution	1920 x 1080
Static Contrast Ratio	1,000:1
Dynamic Contrast Ratio	20M:1
Brightness	250 cd/m2
Backlight Life (Hours)	40,000
Response Time (Typical GTG)	5ms
Panel Type	TN
Colors	16.7M
Viewing Angles	170° horizontal, 160° vertical
Light Source	LED
Panel Surface	3H Scratch Resistant Surface Hardness
Aspect Ratio	16:9
PC Resolution (max)	1920 x 1080
Touch Technology	Resistive
Touch Points	1-Point Touch
USB Type A	1
USB Type B	1
VGA	1
DVI-I	1
Internal Speakers	2W (x2)
Frequency Horizontal	24 ~ 83KHz
Frequency Vertical	50 ~ 76Hz
Analog Sync	Separate Sync / Composite Sync / Sync on Green
Eco Mode (Conserve)	11.5W
Eco Mode (optimized)	14W
Consumption (typical)	17.5W
Consumption (max)	29.5W
Voltage	AC 100-240V (universal), 50-60Hz
Stand-by	0.5W
Physical Controls	GameMode, 1, 2, 3, 4, Power
On Screen Display	Auto Image Adjust, Contrast/Brightness, Input Select, Audio Adjust, Color Adjust, Information, Manual Image Adjust, Advanced Image Adjust, Setup Menu, Memory Recall (See user guide for complete OSD functionality)
Temperature	32-104° F (0 - 40° C)
Humidity (non-condensing)	20-90%
Tilt (Forward/Back)	5° / 20°

Kensington Lock Slot	1
VESA Compatible	100 x 100 mm
Gross (kg)	6.5
Net (kg)	4.8
Net Without Stand (kg)	3.9
Net (lbs)	10.5
Net Without Stand (lbs)	8.7
Gross (lbs)	14.4
Packaging (mm)	570 x 427 x 214
Physical (mm)	512 x 364 x 240
Physical Without Stand (mm)	512 x 311 x 64
Packaging (in.)	22.4 x 16.8 x 8.4
Physical (in.)	20.1 x 14.3 x 9.5
Physical Without Stand (in.)	20.1 x 12.2 x 2.5
Regulations	cULus, FCC-B, ICES003, Energy Star, EPEAT, UL-MX-CoC, Mexico Energy
Package Contents	LCD Display, Power Cable, VGA Cable, DVI Cable, USB2.0 Cable, Audio Cable, Quick Start Guide, ViewSonic Wizard CD-ROM
Warranty	Three-year limited warranty on parts, labor and backlight
Recycle/Disposal	Please dispose of in accordance with local, state or federal laws.

UPC: 766907856217



Contact Sales

ViewSonic.com

888.881.8781

email: salesinfo@viewsonic.com